

**Exportações Brasileiras de Carne Bovina
Brazilian Beef Exports**

Fonte / Source: SECEX-MDIC

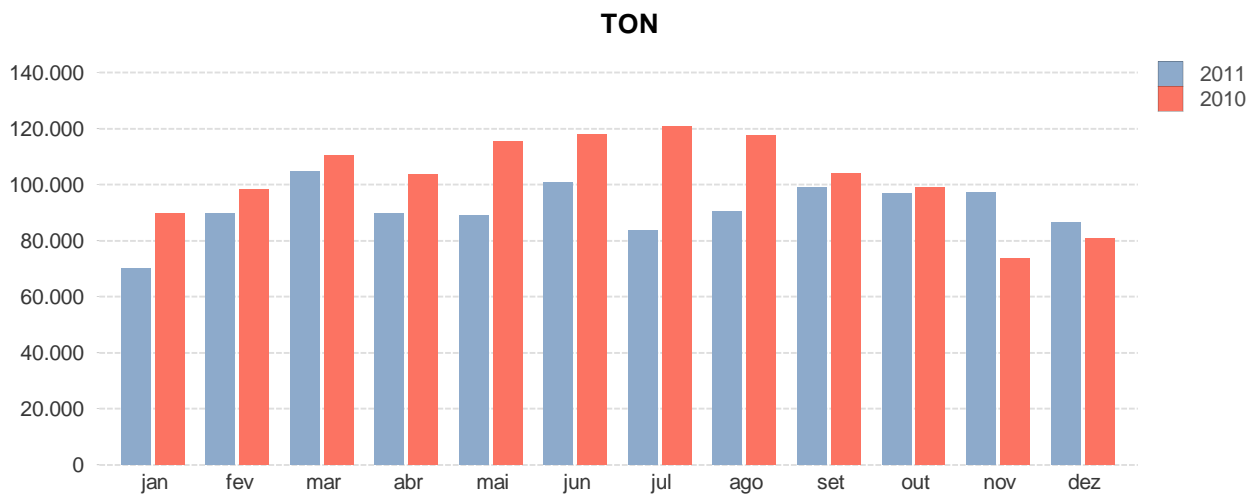
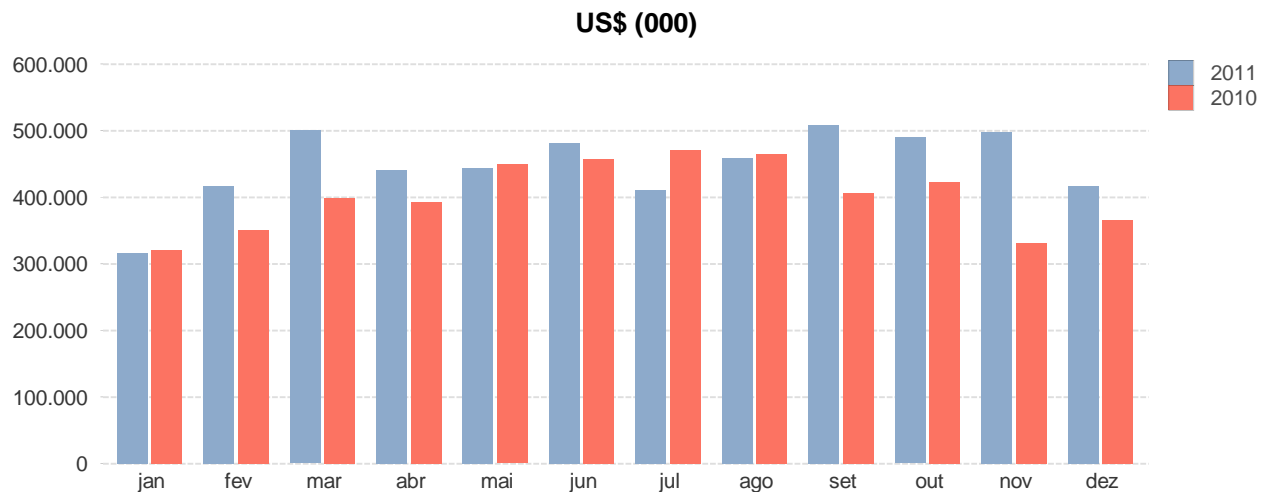
ABIEC



**Categorias / Products:
IN NATURA / FRESH BEEF, INDUSTRIALIZADAS / PROCESSED, MIÚDOS /
OFFALS, SALGADAS / SALTED, TRIPAS / CASINGS**

Periodo: jan/2011 - dez/2011

**EVOLUÇÃO DAS EXPORTAÇÕES DE CARNE BOVINA DO BRASIL
BRAZILIAN BEEF EXPORTS**



jan 2011 - dez 2011

Mes / Month	jan	fev	mar	abr	mai	jun	jul	ago	set	out	nov	dez
US\$ (000)	315.530	416.012	499.439	440.334	444.041	481.722	410.747	458.913	508.664	489.148	496.795	417.239
TONNES	70.056	89.696	104.780	89.890	88.845	100.877	83.825	90.594	98.903	96.778	97.186	86.517
US\$/Ton	4.504	4.638	4.767	4.899	4.998	4.775	4.900	5.066	5.143	5.054	5.112	4.823

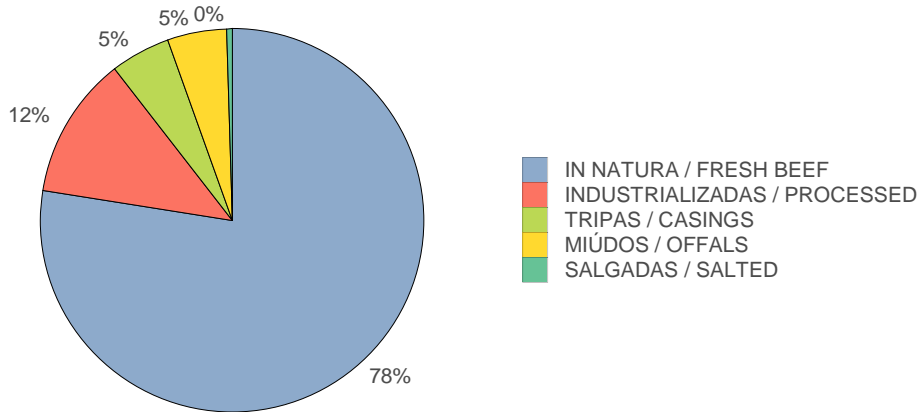


**Exportações Brasileiras de Carne Bovina
Brazilian Beef Exports
Fonte / Source: SECEX-MDIC**

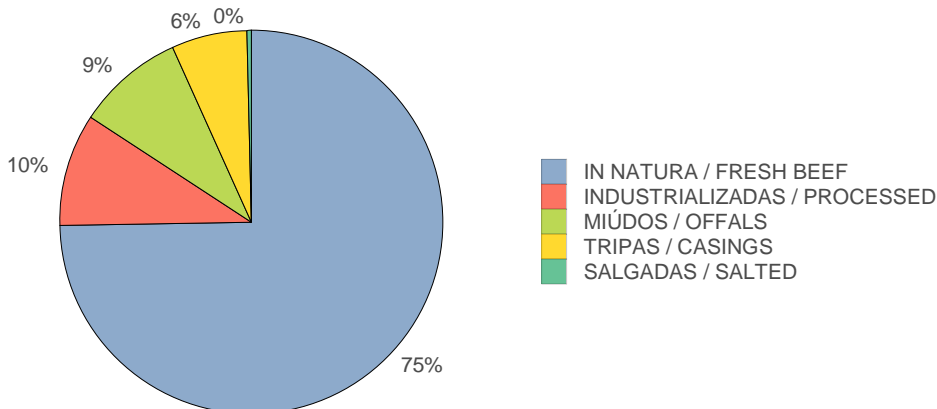
Produto / Product	jan 2011 - dez 2011			jan 2010 - dez 2010			% (2011x2010)		
	US\$ (000)	TONNES	US\$/Ton	US\$ (000)	TONNES	US\$/Ton	US\$ (000)	TONNES	US\$/Ton
IN NATURA / FRESH BEEF	4.169.285	820.239	5.083	3.861.061	951.255	4.059	8%	-14%	25%
INDUSTRIALIZADAS / PROCESSED	644.345	104.602	6.160	528.613	126.408	4.182	22%	-17%	47%
TRIPAS / CASINGS	271.832	69.663	3.902	231.079	67.798	3.408	18%	3%	14%
MIÚDOS / OFFALS	267.360	99.324	2.692	195.075	85.216	2.289	37%	17%	18%
SALGADAS / SALTED	25.762	4.119	6.255	10.017	1.953	5.128	157%	111%	22%
	5.378.585	1.097.947	4.899	4.825.845	1.232.631	3.915	11%	-11%	25%

**EXPORTAÇÕES DE CARNE BOVINA DO BRASIL POR PRODUTOS
BRAZILIAN BEEF EXPORTS PER PRODUCTS**

US\$



TON





Exportações Brasileiras de Carne Bovina
Brazilian Beef Exports
Fonte / Source: SECEX-MDIC
IN NATURA / FRESH BEEF

Destino / Country	ian 2011 - dez 2011			ian 2010 - dez 2010			% (2011x2010)		
	US\$ (000)	TONNES	US\$/Ton	US\$ (000)	TONNES	US\$/Ton	US\$ (000)	TONNES	US\$/Ton
RUSSIA	1.013.691	228.822	4.430	1.023.431	284.909	3.592	-1%	-20%	23%
IRAN	688.804	130.649	5.272	807.321	191.181	4.223	-15%	-32%	25%
EGYPT	413.586	96.937	4.267	409.960	113.228	3.621	1%	-14%	18%
VENEZUELA	376.348	70.901	5.308	186.133	40.125	4.639	102%	77%	14%
HONG KONG	327.766	73.851	4.438	235.278	66.722	3.526	39%	11%	26%
CHILE	200.437	34.244	5.853	97.571	19.902	4.903	105%	72%	19%
ITALY	161.253	19.257	8.374	141.935	18.697	7.591	14%	3%	10%
NETHERLANDS	142.239	13.136	10.828	89.766	10.877	8.253	58%	21%	31%
SAUDI ARABIA	130.734	27.951	4.677	121.916	29.963	4.069	7%	-7%	15%
LEBANON	96.494	15.393	6.269	97.914	19.107	5.125	-1%	-19%	22%
ISRAEL	80.836	15.937	5.072	102.285	24.625	4.154	-21%	-35%	22%
GERMANY	79.763	6.788	11.751	39.232	4.448	8.820	103%	53%	33%
UNITED ARAB EMIRATES	49.461	7.957	6.216	44.397	8.449	5.255	11%	-6%	18%
ALGERIA	38.328	7.218	5.310	102.369	30.144	3.396	-63%	-76%	56%
SPAIN	31.439	3.155	9.966	22.652	3.302	6.861	39%	-4%	45%
JORDAN	29.905	6.260	4.777	31.628	8.529	3.708	-5%	-27%	29%
ANGOLA	29.104	6.369	4.569	20.037	5.295	3.784	45%	20%	21%
PHILIPPINES	27.011	8.092	3.338	31.758	11.630	2.731	-15%	-30%	22%
SINGAPORE	25.607	5.156	4.966	17.954	4.547	3.948	43%	13%	26%
SWEDEN	22.994	1.745	13.174	17.156	1.676	10.239	34%	4%	29%
LIBYA	22.243	5.362	4.148	57.755	16.259	3.552	-61%	-67%	17%
UNITED KINGDOM	17.925	2.096	8.553	10.881	1.881	5.786	65%	11%	48%
KUWAIT	16.428	3.659	4.489	14.505	3.698	3.922	13%	-1%	14%
IRAQ	16.101	3.815	4.221	18.417	4.848	3.799	-13%	-21%	11%
UKRAINE	14.985	3.704	4.045	10.095	3.691	2.735	48%	0%	48%
PALESTINE	12.757	2.810	4.540	0	0	-	-	-	-
CHINA	9.751	2.680	3.639	4.969	1.418	3.503	96%	89%	4%
FINLAND	7.825	518	15.120	5.672	483	11.748	38%	7%	29%
SWITZERLAND	7.562	688	10.986	13.274	1.480	8.967	-43%	-53%	23%
ALBANIA	7.428	2.231	3.330	4.942	1.464	3.375	50%	52%	-1%
PORTUGAL	7.029	679	10.349	6.962	967	7.203	1%	-30%	44%
TUNISIA	5.902	1.304	4.526	6.769	1.492	4.536	-13%	-13%	-0%
SERBIA	5.741	1.794	3.201	4.113	1.792	2.295	40%	0%	39%
FRANCE	3.254	446	7.290	5.007	947	5.288	-35%	-53%	38%
ARUBA	2.994	529	5.655	3.510	735	4.772	-15%	-28%	19%
QATAR	2.837	324	8.765	6.038	894	6.757	-53%	-64%	30%
NETHERLANDS ANTILLES	2.606	488	5.338	4.174	851	4.904	-38%	-43%	9%
KAZAKHSTAN	2.580	670	3.852	1.096	418	2.621	135%	60%	47%
PERU	2.324	327	7.104	2.629	494	5.321	-12%	-34%	34%
CAPE VERDE	2.280	356	6.396	1.730	314	5.517	32%	14%	16%
NORWAY	2.240	141	15.864	796	96	8.313	181%	47%	91%
CANARY, ISLANDS	1.996	202	9.895	1.203	195	6.179	66%	4%	60%
GEORGIA	1.981	640	3.095	900	469	1.921	120%	37%	61%
EQUATORIAL GUINEA	1.934	247	7.819	1.074	186	5.762	80%	33%	36%
	4.169.285	820.239	5.083	3.861.061	951.255	4.059	8%	-14%	25%



Exportações Brasileiras de Carne Bovina
Brazilian Beef Exports
Fonte / Source: SECEX-MDIC
IN NATURA / FRESH BEEF

Destino / Country	ian 2011 - dez 2011			ian 2010 - dez 2010			% (2011x2010)		
	US\$ (000)	TONNES	US\$/Ton	US\$ (000)	TONNES	US\$/Ton	US\$ (000)	TONNES	US\$/Ton
AZERBAIJAN	1.880	259	7.266	1.794	324	5.536	5%	-20%	31%
MONTENEGRO	1.824	455	4.007	1.941	708	2.744	-6%	-36%	46%
GABON	1.572	294	5.346	805	247	3.259	95%	19%	64%
BAHREIN	1.501	223	6.740	2.269	395	5.742	-34%	-44%	17%
DENMARK	1.390	127	10.944	1.663	201	8.278	-16%	-37%	32%
SYRIA	1.370	271	5.049	2.918	599	4.874	-53%	-55%	4%
MADAGASCAR	1.297	224	5.781	0	0	-	-	-	-
SENEGAL	1.287	288	4.462	422	156	2.707	205%	85%	65%
CROATIA	1.077	250	4.316	898	213	4.223	20%	17%	2%
MALAYSIA	1.040	297	3.495	1.742	411	4.236	-40%	-28%	-17%
BOSNIA AND HERZEGOVINA	849	152	5.572	378	139	2.723	124%	10%	105%
MACEDONIA	711	189	3.758	4.846	1.707	2.839	-85%	-89%	32%
CONGO	676	139	4.875	832	321	2.592	-19%	-57%	88%
TURKEY	562	116	4.836	1.405	314	4.479	-60%	-63%	8%
LIBERIA	558	77	7.249	217	89	2.447	157%	-13%	196%
LITHUANIA	497	125	3.980	213	50	4.239	134%	149%	-6%
GREECE	486	87	5.608	1.199	284	4.224	-59%	-69%	33%
MOLDOVA	447	127	3.516	585	154	3.801	-24%	-18%	-8%
MAURITANIA	429	100	4.300	68	25	2.700	528%	294%	59%
MALI	390	54	7.230	72	11	6.584	439%	390%	10%
VIETNAM	372	83	4.465	1.439	440	3.267	-74%	-81%	37%
IRELAND	352	66	5.358	752	210	3.573	-53%	-69%	50%
YEMEN	334	49	6.845	201	35	5.653	67%	38%	21%
DEMOCRATIC REPUBLIC OF THE C...	329	55	6.037	19	5	3.827	1.658%	1.015%	58%
COTE D'IVORE	300	29	10.180	219	39	5.630	37%	-24%	81%
OMAN	294	38	7.736	819	136	6.037	-64%	-72%	28%
REUNION	290	54	5.371	0	0	-	-	-	-
AFGHANISTAN	277	25	11.100	0	0	-	-	-	-
JAPAN	257	75	3.420	343	100	3.428	-25%	-25%	-0%
UNITED STATES	210	51	4.073	10	3	4.050	1.910%	1.899%	1%
MALDIVES	199	26	7.677	90	13	7.078	121%	104%	8%
PANAMA	199	27	7.442	0	0	-	-	-	-
MAURITIUS	190	37	5.146	170	50	3.376	12%	-26%	52%
ESTONIA	184	25	7.411	0	0	-	-	-	-
UZBEKISTAN	184	20	9.100	0	0	-	-	-	-
ARMENIA	173	75	2.312	1.228	615	1.997	-86%	-88%	16%
BELGIUM	173	27	6.392	751	127	5.913	-77%	-79%	8%
URUGUAY	144	22	6.551	174	50	3.477	-17%	-56%	88%
GAMBIA	115	13	8.991	0	0	-	-	-	-
NIGERIA	111	10	10.800	0	0	-	-	-	-
BENIN	95	11	8.473	90	12	7.474	6%	-7%	13%
HAITI	65	22	2.918	33	12	2.765	98%	88%	6%
MARTINIQUE	58	5	11.423	0	0	-	-	-	-
SOUTH AFRICA	36	8	4.452	0	0	-	-	-	-
	4.169.285	820.239	5.083	3.861.061	951.255	4.059	8%	-14%	25%



Exportações Brasileiras de Carne Bovina
 Brazilian Beef Exports
 Fonte / Source: SECEX-MDIC
IN NATURA / FRESH BEEF

Destino / Country	ian 2011 - dez 2011			ian 2010 - dez 2010			% (2011x2010)		
	US\$ (000)	TONNES	US\$/Ton	US\$ (000)	TONNES	US\$/Ton	US\$ (000)	TONNES	US\$/Ton
PAKISTAN	0	0	-	42	10	4.065	-100%	-100%	-
KENYA	0	0	-	91	38	2.411	-100%	-100%	-
SEYCHELLES	0	0	-	309	50	6.136	-100%	-100%	-
TAJIKISTAN	0	0	-	84	26	3.247	-100%	-100%	-
SUDAN	0	0	-	12	2	5.955	-100%	-100%	-
TANZANIA	0	0	-	149	24	6.184	-100%	-100%	-
TRINIDAD AND TOBAGO	0	0	-	94	25	3.700	-100%	-100%	-
CUBA	0	0	-	1.390	221	6.281	-100%	-100%	-
DJIBOUTI	0	0	-	145	23	6.289	-100%	-100%	-
COMOROS	0	0	-	198	68	2.910	-100%	-100%	-
BERMUDA	0	0	-	91	24	3.793	-100%	-100%	-
CYPRUS	0	0	-	128	24	5.300	-100%	-100%	-
MALTA	0	0	-	164	25	6.500	-100%	-100%	-
MOROCCO	0	0	-	93	25	3.700	-100%	-100%	-
GUINEA	0	0	-	263	48	5.472	-100%	-100%	-
	4.169.285	820.239	5.083	3.861.061	951.255	4.059	8%	-14%	25%



Exportações Brasileiras de Carne Bovina
Brazilian Beef Exports
Fonte / Source: SECEX-MDIC
INDUSTRIALIZADAS / PROCESSED

Destino / Country	ian 2011 - dez 2011			ian 2010 - dez 2010			% (2011x2010)		
	US\$ (000)	TONNES	US\$/Ton	US\$ (000)	TONNES	US\$/Ton	US\$ (000)	TONNES	US\$/Ton
UNITED KINGDOM	178.775	33.231	5.380	157.940	42.526	3.714	13%	-22%	45%
UNITED STATES	163.115	12.311	13.249	76.875	13.566	5.667	112%	-9%	134%
NETHERLANDS	68.076	11.019	6.178	50.546	9.631	5.248	35%	14%	18%
ITALY	32.880	3.348	9.820	40.234	5.526	7.281	-18%	-39%	35%
JAPAN	19.734	3.091	6.385	13.208	3.282	4.025	49%	-6%	59%
EGYPT	18.793	4.157	4.521	16.061	4.609	3.484	17%	-10%	30%
JAMAICA	13.276	3.319	4.000	7.513	2.313	3.249	77%	43%	23%
FRANCE	10.305	1.922	5.363	10.414	2.375	4.385	-1%	-19%	22%
SWEDEN	8.858	1.306	6.783	8.056	2.119	3.802	10%	-38%	78%
CANADA	8.594	1.768	4.862	11.874	3.373	3.520	-28%	-48%	38%
CHILE	8.501	1.261	6.743	6.165	1.497	4.119	38%	-16%	64%
BELGIUM	7.485	901	8.310	18.173	4.108	4.423	-59%	-78%	88%
SPAIN	7.374	525	14.042	6.563	598	10.976	12%	-12%	28%
JORDAN	7.238	2.555	2.833	4.900	1.852	2.646	48%	38%	7%
IRELAND	5.466	866	6.312	4.057	701	5.788	35%	24%	9%
GERMANY	4.893	881	5.552	22.551	3.758	6.001	-78%	-77%	-7%
TRINIDAD AND TOBAGO	4.818	1.240	3.887	4.267	1.483	2.877	13%	-16%	35%
ANGOLA	4.087	1.087	3.761	399	154	2.595	925%	607%	45%
PHILIPPINES	3.822	954	4.004	3.067	977	3.139	25%	-2%	28%
SAUDI ARABIA	3.792	1.087	3.487	3.319	1.091	3.042	14%	-0%	15%
UNITED ARAB EMIRATES	3.046	833	3.659	3.328	1.175	2.832	-8%	-29%	29%
BARBADOS	3.017	754	4.002	1.254	409	3.066	141%	84%	31%
DEMOCRATIC REPUBLIC OF THE C...	2.913	885	3.292	1.918	710	2.699	52%	25%	22%
KUWAIT	2.872	764	3.759	7.173	2.035	3.525	-60%	-62%	7%
GHANA	2.781	783	3.551	3.088	1.044	2.958	-10%	-25%	20%
SINGAPORE	2.625	622	4.218	1.905	603	3.159	38%	3%	34%
MALTA	2.225	436	5.108	1.386	435	3.186	61%	0%	60%
BAHAMAS	2.203	567	3.883	1.706	589	2.898	29%	-4%	34%
LEBANON	2.025	619	3.269	2.385	885	2.695	-15%	-30%	21%
PALESTINE	1.930	512	3.768	0	0	-	-	-	-
CANARY, ISLANDS	1.925	356	5.401	1.125	312	3.604	71%	14%	50%
GAMBIA	1.897	879	2.159	1.174	538	2.183	62%	63%	-1%
IRAQ	1.827	616	2.965	56	23	2.442	3.157%	2.582%	21%
CONGO	1.792	575	3.117	475	161	2.955	278%	258%	5%
MAURITIUS	1.563	328	4.772	981	287	3.414	59%	14%	40%
BOLIVIA	1.396	509	2.740	470	206	2.284	197%	147%	20%
AUSTRALIA	1.308	316	4.135	1.381	407	3.396	-5%	-22%	22%
BENIN	1.299	354	3.666	1.722	573	3.003	-25%	-38%	22%
SWITZERLAND	1.286	116	11.068	1.880	231	8.141	-32%	-50%	36%
PARAGUAY	1.245	502	2.483	617	267	2.311	102%	88%	7%
CZECH REPUBLIC	1.108	59	18.739	739	39	18.740	50%	50%	-0%
SOUTH KOREA	1.039	287	3.615	604	242	2.497	72%	19%	45%
GUINEA	992	483	2.057	606	308	1.969	64%	57%	4%
GRENADA	963	238	4.054	313	103	3.041	208%	131%	33%
	644.345	104.602	6.160	528.613	126.408	4.182	22%	-17%	47%



Exportações Brasileiras de Carne Bovina
Brazilian Beef Exports
 Fonte / Source: SECEX-MDIC
INDUSTRIALIZADAS / PROCESSED

Destino / Country	ian 2011 - dez 2011			ian 2010 - dez 2010			% (2011x2010)		
	US\$ (000)	TONNES	US\$/Ton	US\$ (000)	TONNES	US\$/Ton	US\$ (000)	TONNES	US\$/Ton
QATAR	863	236	3.656	746	251	2.967	16%	-6%	23%
SAINT VICENT AND THE GRANADINES	836	200	4.182	194	69	2.822	330%	190%	48%
CUBA	830	395	2.102	3.466	1.773	1.954	-76%	-78%	8%
NIGERIA	792	243	3.257	372	120	3.098	113%	103%	5%
FINLAND	756	98	7.693	1.211	261	4.633	-38%	-62%	66%
SURINAME	751	195	3.859	493	174	2.830	52%	12%	36%
OMAN	723	195	3.697	762	251	3.033	-5%	-22%	22%
PUERTO RICO	647	84	7.700	3.215	940	3.421	-80%	-91%	125%
BELIZE	636	153	4.151	440	138	3.180	45%	11%	31%
ALGERIA	633	143	4.438	679	215	3.152	-7%	-34%	41%
COTE D'IVOIRE	593	194	3.053	255	103	2.465	133%	88%	24%
KENYA	584	179	3.256	450	137	3.290	30%	31%	-1%
ISRAEL	532	138	3.844	3.324	1.108	2.999	-84%	-88%	28%
GEORGIA	531	214	2.479	0	0	-	-	-	-
RUSSIA	510	75	6.809	443	97	4.556	15%	-23%	49%
NETHERLANDS ANTILLES	470	112	4.182	304	91	3.356	55%	24%	25%
URUGUAY	458	158	2.895	359	126	2.840	28%	25%	2%
NORWAY	448	79	5.677	192	54	3.564	133%	47%	59%
ANTIGUA AND BARBUDA	427	106	4.033	368	117	3.144	16%	-10%	28%
NEW ZEALAND	384	95	4.042	382	119	3.201	1%	-20%	26%
SAINT LUCIA	365	83	4.415	453	133	3.417	-19%	-38%	29%
FRENCH POLYNESIA	362	69	5.276	64	17	3.750	463%	300%	41%
PANAMA	346	94	3.696	143	50	2.839	142%	86%	30%
DOMINICA ISLAND	339	79	4.290	259	84	3.088	31%	-6%	39%
SENEGAL	329	158	2.084	201	94	2.132	63%	67%	-2%
TURKMENISTAN	315	122	2.575	1.431	676	2.117	-78%	-82%	22%
ARUBA	299	71	4.204	164	49	3.387	82%	46%	24%
CAYMAN ISLANDS	245	66	3.708	92	28	3.283	167%	137%	13%
HONG KONG	233	105	2.233	305	121	2.516	-23%	-14%	-11%
UGANDA	233	57	4.082	60	17	3.452	288%	228%	18%
SEYCHELLES	230	67	3.449	111	42	2.635	107%	58%	31%
BAHREIN	217	57	3.831	139	41	3.369	56%	37%	14%
GABON	213	74	2.878	237	93	2.533	-10%	-21%	14%
GUYANA	201	57	3.494	249	92	2.692	-19%	-38%	30%
SÃO TOME AND PRINCIPE	187	84	2.231	113	48	2.374	65%	76%	-6%
KIRIBATI	173	36	4.822	48	19	2.533	264%	91%	90%
CAMEROON	164	75	2.188	169	86	1.963	-3%	-13%	11%
SOUTH AFRICA	160	36	4.403	97	31	3.092	65%	16%	42%
TOGO	142	42	3.385	6	1	3.845	2.465%	2.813%	-12%
TAJIKISTAN	140	62	2.264	108	52	2.075	29%	19%	9%
SIERRA LEONE	140	77	1.812	108	44	2.481	29%	76%	-27%
BRUNEI	139	35	3.937	166	55	3.011	-16%	-36%	31%
VIRGIN ISLANDS (UK)	129	29	4.421	47	15	3.164	173%	95%	40%
UZBEKISTAN	115	52	2.206	0	0	-	-	-	-
	644.345	104.602	6.160	528.613	126.408	4.182	22%	-17%	47%



Exportações Brasileiras de Carne Bovina
 Brazilian Beef Exports
 Fonte / Source: SECEX-MDIC
INDUSTRIALIZADAS / PROCESSED

Destino / Country	ian 2011 - dez 2011			ian 2010 - dez 2010			% (2011x2010)		
	US\$ (000)	TONNES	US\$/Ton	US\$ (000)	TONNES	US\$/Ton	US\$ (000)	TONNES	US\$/Ton
MOZAMBIQUE	114	51	2.217	3	1	2.564	4.312%	5.003%	-14%
MONACO	105	22	4.700	0	0	-	-	-	-
EQUATORIAL GUINEA	99	33	3.016	11	4	3.055	817%	829%	-1%
CHINA	98	22	4.472	111	25	4.476	-11%	-11%	-0%
PERU	98	4	22.045	123	30	4.126	-20%	-85%	434%
SYRIA	89	40	2.220	0	0	-	-	-	-
KAZAKHSTAN	87	37	2.346	0	0	-	-	-	-
CYPRUS	85	30	2.848	213	66	3.233	-60%	-55%	-12%
TAIWAN	80	5	16.003	73	5	14.656	9%	0%	9%
LIBERIA	79	37	2.167	16	7	2.241	391%	407%	-3%
HAITI	70	14	4.947	116	42	2.748	-39%	-66%	80%
ANGUILLA	67	16	4.116	0	0	-	-	-	-
MICRONESIA	62	17	3.601	102	35	2.922	-39%	-51%	23%
BERMUDA	59	15	4.044	50	16	3.186	18%	-7%	27%
MALI	41	19	2.210	11	5	2.163	267%	259%	2%
COLOMBIA	34	2	20.216	47	2	21.109	-28%	-24%	-4%
CAPE VERDE	32	11	3.032	65	24	2.694	-51%	-57%	13%
GUINEA-BISSAU	24	11	2.230	0	0	-	-	-	-
MADAGASCAR	22	8	2.795	0	0	-	-	-	-
TURKEY	14	7	2.010	0	0	-	-	-	-
YEMEN	6	1	3.783	15	5	3.333	-63%	-68%	14%
CENTRAL AFRICAN REPUBLIC	1	0	3.630	0	0	-	-	-	-
DJIBOUTI	1	0	3.680	5	1	3.172	-88%	-89%	16%
PORTUGAL	0	0	-	121	43	2.836	-100%	-100%	-
TANZANIA	0	0	-	1.886	672	2.808	-100%	-100%	-
TURKS AND CAICOS, ISLANDS	0	0	-	44	18	2.473	-100%	-100%	-
SAMOA	0	0	-	174	69	2.531	-100%	-100%	-
SERBIA	0	0	-	11	15	712	-100%	-100%	-
GREECE	0	0	-	55	13	4.353	-100%	-100%	-
GUAM	0	0	-	192	57	3.361	-100%	-100%	-
MEXICO	0	0	-	42	14	3.087	-100%	-100%	-
MAURITANIA	0	0	-	74	19	3.866	-100%	-100%	-
NAMIBIA	0	0	-	2	0	5.147	-100%	-100%	-
AZERBAIJAN	0	0	-	122	52	2.359	-100%	-100%	-
BANGLADESH	0	0	-	1	0	2.456	-100%	-100%	-
LIBYA	0	0	-	36	11	3.250	-100%	-100%	-
	644.345	104.602	6.160	528.613	126.408	4.182	22%	-17%	47%



Exportações Brasileiras de Carne Bovina
Brazilian Beef Exports
Fonte / Source: SECEX-MDIC
MIÚDOS / OFFALS

Destino / Country	ian 2011 - dez 2011			ian 2010 - dez 2010			% (2011x2010)		
	US\$ (000)	TONNES	US\$/Ton	US\$ (000)	TONNES	US\$/Ton	US\$ (000)	TONNES	US\$/Ton
HONG KONG	207.437	68.678	3.020	147.507	55.789	2.644	41%	23%	14%
PERU	12.106	6.714	1.803	9.211	6.741	1.366	31%	-0%	32%
UKRAINE	7.043	1.937	3.636	4.027	1.381	2.917	75%	40%	25%
EGYPT	6.749	4.044	1.669	4.951	3.975	1.246	36%	2%	34%
COTE D'IVOIRE	5.688	5.563	1.022	4.601	5.884	782	24%	-5%	31%
KAZAKHSTAN	3.384	916	3.696	9.623	3.491	2.757	-65%	-74%	34%
AZERBAIJAN	2.959	904	3.272	289	115	2.522	923%	688%	30%
ISRAEL	2.192	841	2.608	3.202	1.340	2.389	-32%	-37%	9%
VIETNAM	2.104	537	3.919	441	174	2.534	377%	209%	55%
ANGOLA	1.973	1.460	1.351	1.788	1.396	1.281	10%	5%	6%
IRAQ	1.812	527	3.441	0	0	-	-	-	-
SAUDI ARABIA	1.765	685	2.578	1.826	840	2.174	-3%	-18%	19%
MOLDOVA	1.538	518	2.966	1.645	705	2.334	-7%	-26%	27%
GABON	1.284	1.247	1.029	791	868	911	62%	44%	13%
CONGO	1.078	998	1.080	149	206	724	624%	385%	49%
DEMOCRATIC REPUBLIC OF THE C...	911	783	1.162	62	101	612	1.368%	673%	90%
UNITED ARAB EMIRATES	910	255	3.565	700	274	2.552	30%	-7%	40%
SOUTH AFRICA	801	400	2.002	118	67	1.768	581%	501%	13%
LIBERIA	636	487	1.305	106	124	852	502%	293%	53%
PALESTINE	579	335	1.728	0	0	-	-	-	-
IRAN	417	75	5.564	184	65	2.816	127%	15%	98%
LEBANON	380	148	2.568	153	107	1.432	148%	38%	79%
NETHERLANDS ANTILLES	373	82	4.569	190	64	2.965	97%	28%	54%
KUWAIT	353	144	2.446	329	154	2.141	7%	-6%	14%
QATAR	336	79	4.238	224	73	3.062	50%	8%	38%
RUSSIA	312	102	3.063	198	43	4.565	57%	134%	-33%
FRANCE	298	75	3.969	25	27	900	1.112%	175%	341%
CHINA	296	106	2.800	490	198	2.477	-40%	-47%	13%
JORDAN	285	99	2.875	32	25	1.270	797%	296%	126%
UNITED STATES	204	102	2.007	279	74	3.778	-27%	37%	-47%
TURKEY	179	60	2.999	98	38	2.613	81%	58%	15%
PORTUGAL	131	56	2.337	73	25	2.991	79%	129%	-22%
KYRGYZSTAN	103	25	4.126	0	0	-	-	-	-
BELGIUM	92	26	3.590	0	0	-	-	-	-
JAPAN	86	25	3.452	0	0	-	-	-	-
GHANA	78	52	1.500	0	0	-	-	-	-
ARUBA	77	21	3.684	86	29	2.972	-10%	-27%	24%
AFGHANISTAN	77	25	3.010	0	0	-	-	-	-
PARAGUAY	69	13	5.177	0	0	-	-	-	-
GUINEA	64	52	1.223	2	3	800	2.547%	1.632%	53%
LIBYA	52	33	1.592	46	17	2.700	13%	91%	-41%
MADAGASCAR	48	10	4.777	0	0	-	-	-	-
ZIMBABWE	42	50	850	0	0	-	-	-	-
COMOROS	23	24	950	4	4	953	444%	445%	-0%
	267.360	99.324	2.692	195.075	85.216	2.289	37%	17%	18%



Exportações Brasileiras de Carne Bovina
 Brazilian Beef Exports
 Fonte / Source: SECEX-MDIC
MIÚDOS / OFFALS

Destino / Country	ian 2011 - dez 2011			ian 2010 - dez 2010			% (2011x2010)		
	US\$ (000)	TONNES	US\$/Ton	US\$ (000)	TONNES	US\$/Ton	US\$ (000)	TONNES	US\$/Ton
THAILAND	9	2	3.907	0	0	-	-	-	-
GEORGIA	9	3	2.985	364	180	2.022	-98%	-98%	48%
CAPE VERDE	7	2	3.492	23	11	2.047	-70%	-82%	71%
EQUATORIAL GUINEA	7	3	2.284	34	16	2.059	-80%	-82%	11%
OMAN	5	1	4.500	71	16	4.557	-94%	-93%	-1%
MONTENEGRO	0	0	-	232	131	1.768	-100%	-100%	-
MYANMAR	0	0	-	67	28	2.362	-100%	-100%	-
SERBIA	0	0	-	90	61	1.478	-100%	-100%	-
ARMENIA	0	0	-	108	78	1.377	-100%	-100%	-
ALBANIA	0	0	-	82	40	2.067	-100%	-100%	-
BOSNIA AND HERZEGOVINA	0	0	-	19	15	1.321	-100%	-100%	-
BAHREIN	0	0	-	32	10	3.182	-100%	-100%	-
ITALY	0	0	-	407	165	2.470	-100%	-100%	-
LATVIA	0	0	-	63	24	2.600	-100%	-100%	-
MACEDONIA	0	0	-	33	25	1.315	-100%	-100%	-
HAITI	0	0	-	0	0	1.597	-100%	-100%	-
	267.360	99.324	2.692	195.075	85.216	2.289	37%	17%	18%



Exportações Brasileiras de Carne Bovina
 Brazilian Beef Exports
 Fonte / Source: SECEX-MDIC
SALGADAS / SALTED

Destino / Country	ian 2011 - dez 2011			ian 2010 - dez 2010			% (2011x2010)		
	US\$ (000)	TONNES	US\$/Ton	US\$ (000)	TONNES	US\$/Ton	US\$ (000)	TONNES	US\$/Ton
ANGOLA	25.613	4.096	6.253	9.922	1.924	5.158	158%	113%	21%
BOLIVIA	125	19	6.516	9	2	5.591	1.309%	1.109%	17%
PARAGUAY	24	4	6.731	10	1	10.488	144%	279%	-36%
ECUADOR	1	0	8.000	0	0	-	-	-	-
MOZAMBIQUE	0	0	-	5	1	7.314	-100%	-100%	-
HONG KONG	0	0	-	54	26	2.069	-100%	-100%	-
UNITED ARAB EMIRATES	0	0	-	17	1	25.628	-100%	-100%	-
	25.762	4.119	6.255	10.017	1.953	5.128	157%	111%	22%



Exportações Brasileiras de Carne Bovina
 Brazilian Beef Exports
 Fonte / Source: SECEX-MDIC
TRIPAS / CASINGS

ian 2011 - dez 2011

ian 2010 - dez 2010

%(2011x2010)

Destino / Country	US\$ (000)	TONNES	US\$/Ton	US\$ (000)	TONNES	US\$/Ton	US\$ (000)	TONNES	US\$/Ton
HONG KONG	156.044	45.929	3.398	119.866	42.837	2.798	30%	7%	21%
RUSSIA	46.188	8.633	5.350	48.537	10.126	4.793	-5%	-15%	12%
UKRAINE	18.913	3.807	4.967	24.777	5.273	4.699	-24%	-28%	6%
ITALY	9.562	2.228	4.292	7.343	1.955	3.756	30%	14%	14%
SPAIN	7.121	1.807	3.942	4.781	1.369	3.492	49%	32%	13%
ALBANIA	6.261	920	6.808	1.428	289	4.933	338%	218%	38%
LEBANON	5.901	1.587	3.717	1.414	323	4.380	317%	392%	-15%
GERMANY	5.375	862	6.238	4.329	877	4.935	24%	-2%	26%
UNITED STATES	3.377	682	4.948	3.607	705	5.116	-6%	-3%	-3%
SWITZERLAND	2.165	305	7.102	807	140	5.767	168%	118%	23%
NETHERLANDS	1.768	300	5.890	1.232	219	5.619	43%	37%	5%
TURKEY	1.349	258	5.232	275	39	7.125	390%	568%	-27%
SOUTH AFRICA	1.231	273	4.504	1.066	227	4.702	15%	21%	-4%
FRANCE	1.174	190	6.164	1.011	181	5.580	16%	5%	10%
EGYPT	891	521	1.708	2.714	944	2.876	-67%	-45%	-41%
CHINA	590	139	4.241	301	123	2.453	96%	13%	73%
SERBIA	462	105	4.418	663	180	3.685	-30%	-42%	20%
PORTUGAL	440	151	2.912	549	210	2.616	-20%	-28%	11%
PERU	433	209	2.072	2.213	715	3.096	-80%	-71%	-33%
VIETNAM	431	129	3.353	533	211	2.531	-19%	-39%	32%
KAZAKHSTAN	388	59	6.617	404	78	5.165	-4%	-25%	28%
PAKISTAN	386	84	4.601	408	97	4.210	-5%	-13%	9%
ANGOLA	309	192	1.608	145	52	2.792	114%	271%	-42%
JAPAN	215	81	2.665	35	12	2.913	515%	572%	-9%
BOSNIA AND HERZEGOVINA	205	42	4.920	257	60	4.285	-20%	-31%	15%
MOLDOVA	134	32	4.209	22	5	4.173	506%	501%	1%
ESTONIA	114	20	5.638	508	100	5.098	-77%	-80%	11%
THAILAND	94	25	3.742	0	0	-	-	-	-
UNITED KINGDOM	87	21	4.169	81	20	3.995	6%	2%	4%
UNITED ARAB EMIRATES	79	27	2.955	97	36	2.683	-19%	-27%	10%
KUWAIT	43	14	3.049	69	23	2.980	-38%	-39%	2%
ARUBA	35	12	3.041	13	5	2.710	173%	143%	12%
SAUDI ARABIA	30	9	3.387	48	16	2.944	-37%	-45%	15%
QATAR	27	9	2.983	9	4	2.385	214%	151%	25%
ISRAEL	6	1	5.867	37	10	3.711	-85%	-90%	58%
URUGUAY	3	0	7.091	6	1	8.524	-39%	-26%	-17%
NETHERLANDS ANTILLES	1	1	2.903	13	5	2.609	-89%	-90%	11%
ROMANIA	0	0	-	219	40	5.501	-100%	-100%	-
POLAND	0	0	-	50	20	2.463	-100%	-100%	-
MEXICO	0	0	-	40	2	17.391	-100%	-100%	-
MYANMAR	0	0	-	67	23	2.897	-100%	-100%	-
OMAN	0	0	-	12	4	2.868	-100%	-100%	-
DEMOCRATIC REPUBLIC OF THE C...	0	0	-	29	5	5.654	-100%	-100%	-
BAHREIN	0	0	-	3	1	3.050	-100%	-100%	-
	271.832	69.663	3.902	231.079	67.798	3.408	18%	3%	14%



Exportações Brasileiras de Carne Bovina
 Brazilian Beef Exports
 Fonte / Source: SECEX-MDIC
TRIPAS / CASINGS

Destino / Country	ian 2011 - dez 2011			ian 2010 - dez 2010			% (2011x2010)		
	US\$ (000)	TONNES	US\$/Ton	US\$ (000)	TONNES	US\$/Ton	US\$ (000)	TONNES	US\$/Ton
CAPE VERDE	0	0	-	6	2	2.516	-100%	-100%	-
CANADA	0	0	-	13	0	35.507	-100%	-100%	-
GABON	0	0	-	69	42	1.628	-100%	-100%	-
GEORGIA	0	0	-	946	182	5.208	-100%	-100%	-
IRAN	0	0	-	26	9	2.916	-100%	-100%	-
	271.832	69.663	3.902	231.079	67.798	3.408	18%	3%	14%



Exportações Brasileiras de Carne Bovina
Brazilian Beef Exports
Fonte / Source: SECEX-MDIC
TOTAL POR PAÍS / TOTAL PER COUNTRY

Destino / Country	ian 2011 - dez 2011			ian 2010 - dez 2010			% (2011x2010)		
	US\$ (000)	TONNES	US\$/Ton	US\$ (000)	TONNES	US\$/Ton	US\$ (000)	TONNES	US\$/Ton
RUSSIA	1.060.701	237.631	4.464	1.072.609	295.176	3.634	-1%	-19%	23%
HONG KONG	691.481	188.562	3.667	503.008	165.496	3.039	37%	14%	21%
IRAN	689.221	130.724	5.272	807.531	191.255	4.222	-15%	-32%	25%
EGYPT	440.019	105.659	4.165	433.686	122.756	3.533	1%	-14%	18%
VENEZUELA	376.348	70.901	5.308	186.133	40.125	4.639	102%	77%	14%
NETHERLANDS	212.083	24.455	8.672	141.544	20.727	6.829	50%	18%	27%
CHILE	208.937	35.505	5.885	103.736	21.399	4.848	101%	66%	21%
ITALY	203.695	24.834	8.202	189.918	26.343	7.210	7%	-6%	14%
UNITED KINGDOM	196.786	35.347	5.567	168.902	44.427	3.802	17%	-20%	46%
UNITED STATES	166.905	13.147	12.696	80.772	14.348	5.630	107%	-8%	126%
SAUDI ARABIA	136.321	29.732	4.585	127.109	31.910	3.983	7%	-7%	15%
LEBANON	104.800	17.747	5.905	101.866	20.421	4.988	3%	-13%	18%
GERMANY	90.032	8.531	10.554	66.112	9.083	7.278	36%	-6%	45%
ISRAEL	83.565	16.916	4.940	108.848	27.084	4.019	-23%	-38%	23%
ANGOLA	61.087	13.205	4.626	32.291	8.820	3.661	89%	50%	26%
UNITED ARAB EMIRATES	53.497	9.072	5.897	48.539	9.935	4.886	10%	-9%	21%
SPAIN	45.934	5.486	8.372	33.997	5.269	6.452	35%	4%	30%
UKRAINE	40.942	9.449	4.333	38.899	10.344	3.761	5%	-9%	15%
ALGERIA	38.961	7.361	5.293	103.048	30.359	3.394	-62%	-76%	56%
JORDAN	37.428	8.914	4.199	36.560	10.406	3.513	2%	-14%	20%
SWEDEN	31.852	3.051	10.439	25.212	3.795	6.644	26%	-20%	57%
PHILIPPINES	30.833	9.046	3.408	34.824	12.607	2.762	-11%	-28%	23%
SINGAPORE	28.232	5.778	4.886	19.860	5.151	3.856	42%	12%	27%
LIBYA	22.295	5.395	4.133	57.837	16.287	3.551	-61%	-67%	16%
JAPAN	20.292	3.272	6.203	13.586	3.394	4.003	49%	-4%	55%
IRAQ	19.741	4.958	3.982	18.473	4.871	3.792	7%	2%	5%
KUWAIT	19.696	4.582	4.299	22.075	5.909	3.736	-11%	-22%	15%
PALESTINE	15.266	3.657	4.175	0	0	-	-	-	-
FRANCE	15.031	2.633	5.707	16.456	3.530	4.661	-9%	-25%	22%
PERU	14.961	7.255	2.062	14.176	7.980	1.776	6%	-9%	16%
ALBANIA	13.689	3.150	4.345	6.452	1.793	3.597	112%	76%	21%
JAMAICA	13.276	3.319	4.000	7.513	2.313	3.249	77%	43%	23%
SWITZERLAND	11.014	1.109	9.927	15.962	1.851	8.622	-31%	-40%	15%
CHINA	10.735	2.947	3.643	5.871	1.764	3.329	83%	67%	9%
CANADA	8.594	1.768	4.862	11.887	3.373	3.524	-28%	-48%	38%
FINLAND	8.581	616	13.934	6.883	744	9.249	25%	-17%	51%
BELGIUM	7.750	953	8.129	18.924	4.235	4.468	-59%	-77%	82%
PORTUGAL	7.601	887	8.573	7.706	1.244	6.196	-1%	-29%	38%
COTE D'IVOIRE	6.581	5.787	1.137	5.075	6.026	842	30%	-4%	35%
KAZAKHSTAN	6.439	1.681	3.830	11.123	3.987	2.790	-42%	-58%	37%
SERBIA	6.202	1.898	3.268	4.877	2.048	2.381	27%	-7%	37%
TUNISIA	5.902	1.304	4.526	6.769	1.492	4.536	-13%	-13%	-0%
IRELAND	5.819	932	6.245	4.808	911	5.277	21%	2%	18%
AZERBAIJAN	4.838	1.163	4.161	2.205	491	4.496	119%	137%	-7%
TOTAL	5.378.585	1.097.947	4.899	4.825.845	1.232.631	3.915	11%	-11%	25%



Exportações Brasileiras de Carne Bovina
Brazilian Beef Exports
Fonte / Source: SECEX-MDIC
TOTAL POR PAÍS / TOTAL PER COUNTRY

Destino / Country	ian 2011 - dez 2011			ian 2010 - dez 2010			% (2011x2010)		
	US\$ (000)	TONNES	US\$/Ton	US\$ (000)	TONNES	US\$/Ton	US\$ (000)	TONNES	US\$/Ton
TRINIDAD AND TOBAGO	4.818	1.240	3.887	4.362	1.509	2.891	10%	-18%	34%
DEMOCRATIC REPUBLIC OF THE C...	4.153	1.723	2.411	2.028	822	2.467	105%	110%	-2%
QATAR	4.063	648	6.270	7.017	1.222	5.743	-42%	-47%	9%
CANARY, ISLANDS	3.921	558	7.026	2.328	507	4.592	68%	10%	53%
CONGO	3.547	1.712	2.072	1.456	687	2.118	144%	149%	-2%
NETHERLANDS ANTILLES	3.450	683	5.054	4.681	1.011	4.631	-26%	-32%	9%
ARUBA	3.406	633	5.379	3.773	818	4.614	-10%	-23%	17%
GABON	3.069	1.615	1.900	1.901	1.251	1.520	61%	29%	25%
BARBADOS	3.017	754	4.002	1.254	409	3.066	141%	84%	31%
VIETNAM	2.907	749	3.882	2.413	825	2.925	20%	-9%	33%
GHANA	2.858	835	3.423	3.088	1.044	2.958	-7%	-20%	16%
NORWAY	2.688	220	12.211	988	150	6.604	172%	47%	85%
GEORGIA	2.520	857	2.941	2.210	830	2.662	14%	3%	10%
CAPE VERDE	2.319	369	6.285	1.824	351	5.192	27%	5%	21%
SOUTH AFRICA	2.227	718	3.104	1.280	325	3.945	74%	121%	-21%
MALTA	2.225	436	5.108	1.550	460	3.368	43%	-5%	52%
BAHAMAS	2.203	567	3.883	1.706	589	2.898	29%	-4%	34%
MOLDOVA	2.119	677	3.127	2.253	864	2.607	-6%	-22%	20%
TURKEY	2.104	441	4.774	1.779	390	4.561	18%	13%	5%
EQUATORIAL GUINEA	2.039	283	7.207	1.118	206	5.423	82%	37%	33%
GAMBIA	2.012	891	2.257	1.174	538	2.183	71%	66%	3%
MONTENEGRO	1.824	455	4.007	2.174	839	2.591	-16%	-46%	55%
MAURITIUS	1.753	365	4.810	1.151	338	3.409	52%	8%	41%
BAHREIN	1.717	279	6.151	2.443	447	5.459	-30%	-38%	13%
SENEGAL	1.616	446	3.622	623	250	2.490	159%	78%	45%
BOLIVIA	1.521	529	2.877	479	208	2.309	217%	155%	25%
SYRIA	1.459	311	4.686	2.918	599	4.874	-50%	-48%	-4%
BENIN	1.394	366	3.813	1.812	585	3.095	-23%	-38%	23%
DENMARK	1.390	127	10.944	1.663	201	8.278	-16%	-37%	32%
MADAGASCAR	1.367	242	5.641	0	0	-	-	-	-
PARAGUAY	1.338	519	2.581	627	268	2.339	113%	93%	10%
AUSTRALIA	1.308	316	4.135	1.381	407	3.396	-5%	-22%	22%
LIBERIA	1.273	601	2.119	339	220	1.541	276%	173%	38%
CZECH REPUBLIC	1.108	59	18.739	739	39	18.740	50%	50%	-0%
CROATIA	1.077	250	4.316	898	213	4.223	20%	17%	2%
GUINEA	1.056	535	1.976	872	359	2.428	21%	49%	-19%
BOSNIA AND HERZEGOVINA	1.054	194	5.433	655	214	3.066	61%	-9%	77%
MALAYSIA	1.040	297	3.495	1.742	411	4.236	-40%	-28%	-17%
SOUTH KOREA	1.039	287	3.615	604	242	2.497	72%	19%	45%
OMAN	1.021	234	4.355	1.665	407	4.092	-39%	-42%	6%
GRENADA	963	238	4.054	313	103	3.041	208%	131%	33%
NIGERIA	903	254	3.562	372	120	3.098	143%	111%	15%
SAINT VICENT AND THE GRANADINES	836	200	4.182	194	69	2.822	330%	190%	48%
CUBA	830	395	2.102	4.856	1.995	2.435	-83%	-80%	-14%
TOTAL	5.378.585	1.097.947	4.899	4.825.845	1.232.631	3.915	11%	-11%	25%



Exportações Brasileiras de Carne Bovina
Brazilian Beef Exports
 Fonte / Source: SECEX-MDIC
TOTAL POR PAÍS / TOTAL PER COUNTRY

Destino / Country	ian 2011 - dez 2011			ian 2010 - dez 2010			% (2011x2010)		
	US\$ (000)	TONNES	US\$/Ton	US\$ (000)	TONNES	US\$/Ton	US\$ (000)	TONNES	US\$/Ton
SURINAME	751	195	3.859	493	174	2.830	52%	12%	36%
MACEDONIA	711	189	3.758	4.879	1.732	2.817	-85%	-89%	33%
PUERTO RICO	647	84	7.700	3.215	940	3.421	-80%	-91%	125%
BELIZE	636	153	4.151	440	138	3.180	45%	11%	31%
URUGUAY	606	181	3.352	538	177	3.041	13%	2%	10%
KENYA	584	179	3.256	542	175	3.099	8%	3%	5%
PANAMA	544	120	4.527	143	50	2.839	281%	139%	59%
LITHUANIA	497	125	3.980	213	50	4.239	134%	149%	-6%
GREECE	486	87	5.608	1.254	297	4.229	-61%	-71%	33%
MALI	431	72	5.947	84	16	5.172	416%	349%	15%
MAURITANIA	429	100	4.300	142	44	3.203	201%	124%	34%
ANTIGUA AND BARBUDA	427	106	4.033	368	117	3.144	16%	-10%	28%
PAKISTAN	386	84	4.601	450	107	4.196	-14%	-22%	10%
NEW ZEALAND	384	95	4.042	382	119	3.201	1%	-20%	26%
SAINT LUCIA	365	83	4.415	453	133	3.417	-19%	-38%	29%
FRENCH POLYNESIA	362	69	5.276	64	17	3.750	463%	300%	41%
AFGHANISTAN	353	50	7.011	0	0	-	-	-	-
YEMEN	340	50	6.755	216	40	5.390	58%	26%	25%
DOMINICA ISLAND	339	79	4.290	259	84	3.088	31%	-6%	39%
TURKMENISTAN	315	122	2.575	1.431	676	2.117	-78%	-82%	22%
UZBEKISTAN	299	72	4.135	0	0	-	-	-	-
ESTONIA	298	45	6.614	508	100	5.098	-41%	-55%	30%
REUNION	290	54	5.371	0	0	-	-	-	-
CAYMAN ISLANDS	245	66	3.708	92	28	3.283	167%	137%	13%
UGANDA	233	57	4.082	60	17	3.452	288%	228%	18%
SEYCHELLES	230	67	3.449	420	93	4.538	-45%	-28%	-24%
GUYANA	201	57	3.494	249	92	2.692	-19%	-38%	30%
MALDIVES	199	26	7.677	90	13	7.078	121%	104%	8%
SÃO TOME AND PRINCIPE	187	84	2.231	113	48	2.374	65%	76%	-6%
KIRIBATI	173	36	4.822	48	19	2.533	264%	91%	90%
ARMENIA	173	75	2.312	1.336	693	1.927	-87%	-89%	20%
CAMEROON	164	75	2.188	169	86	1.963	-3%	-13%	11%
TOGO	142	42	3.385	6	1	3.845	2.465%	2.813%	-12%
TAJIKISTAN	140	62	2.264	193	78	2.464	-27%	-21%	-8%
SIERRA LEONE	140	77	1.812	108	44	2.481	29%	76%	-27%
BRUNEI	139	35	3.937	166	55	3.011	-16%	-36%	31%
HAITI	136	37	3.708	149	54	2.747	-9%	-33%	35%
VIRGIN ISLANDS (UK)	129	29	4.421	47	15	3.164	173%	95%	40%
MOZAMBIQUE	114	51	2.217	8	2	4.511	1.380%	2.912%	-51%
MONACO	105	22	4.700	0	0	-	-	-	-
KYRGYZSTAN	103	25	4.126	0	0	-	-	-	-
THAILAND	103	27	3.756	0	0	-	-	-	-
CYPRUS	85	30	2.848	340	90	3.787	-75%	-67%	-25%
TAIWAN	80	5	16.003	73	5	14.656	9%	0%	9%
	5.378.585	1.097.947	4.899	4.825.845	1.232.631	3.915	11%	-11%	25%



Exportações Brasileiras de Carne Bovina
Brazilian Beef Exports
Fonte / Source: SECEX-MDIC
TOTAL POR PAÍS / TOTAL PER COUNTRY

Destino / Country	ian 2011 - dez 2011			ian 2010 - dez 2010			% (2011x2010)		
	US\$ (000)	TONNES	US\$/Ton	US\$ (000)	TONNES	US\$/Ton	US\$ (000)	TONNES	US\$/Ton
ANGUILLA	67	16	4.116	0	0	-	-	-	-
MICRONESIA	62	17	3.601	102	35	2.922	-39%	-51%	23%
BERMUDA	59	15	4.044	141	40	3.552	-58%	-63%	14%
MARTINIQUE	58	5	11.423	0	0	-	-	-	-
ZIMBABWE	42	50	850	0	0	-	-	-	-
COLOMBIA	34	2	20.216	47	2	21.109	-28%	-24%	-4%
GUINEA-BISSAU	24	11	2.230	0	0	-	-	-	-
COMOROS	23	24	950	202	73	2.791	-89%	-67%	-66%
CENTRAL AFRICAN REPUBLIC	1	0	3.630	0	0	-	-	-	-
DJIBOUTI	1	0	3.680	149	24	6.106	-100%	-99%	-40%
ECUADOR	1	0	8.000	0	0	-	-	-	-
SUDAN	0	0	-	12	2	5.955	-100%	-100%	-
SAMOA	0	0	-	174	69	2.531	-100%	-100%	-
BANGLADESH	0	0	-	1	0	2.456	-100%	-100%	-
TANZANIA	0	0	-	2.035	696	2.924	-100%	-100%	-
TURKS AND CAICOS, ISLANDS	0	0	-	44	18	2.473	-100%	-100%	-
MYANMAR	0	0	-	133	51	2.602	-100%	-100%	-
ROMANIA	0	0	-	219	40	5.501	-100%	-100%	-
NAMIBIA	0	0	-	2	0	5.147	-100%	-100%	-
LATVIA	0	0	-	63	24	2.600	-100%	-100%	-
MOROCCO	0	0	-	93	25	3.700	-100%	-100%	-
MEXICO	0	0	-	82	16	5.142	-100%	-100%	-
POLAND	0	0	-	50	20	2.463	-100%	-100%	-
GUAM	0	0	-	192	57	3.361	-100%	-100%	-
	5.378.585	1.097.947	4.899	4.825.845	1.232.631	3.915	11%	-11%	25%