

**Exportações Brasileiras de Carne Bovina  
Brazilian Beef Exports**

**Fonte / Source: SECEX-MDIC**

**ABIEC**



**Categorias / Products:  
IN NATURA / FRESH BEEF, INDUSTRIALIZADAS / PROCESSED, MIÚDOS /  
OFFALS, SALGADAS / SALTED, TRIPAS / CASINGS**

Periodo: jan/2006 - dez/2006



**Exportações Brasileiras de Carne Bovina  
Brazilian Beef Exports**

Fonte / Source: SECEX-MDIC

**2006** **2005** **%(2006x2005)**

Janeiro / January	US\$ (000)	TONNES	US\$/Ton	US\$ (000)	TONNES	US\$/Ton	US\$ (000)	TONNES	US\$/Ton
IN NATURA / FRESH BEEF	180.676	80.918	2.233	140.595	65.579	2.144	29%	23%	4%
INDUSTRIALIZADAS / PROCESSED	54.797	15.783	3.472	40.095	15.511	2.585	37%	2%	34%
MIÚDOS / OFFALS	5.387	4.717	1.142	5.429	5.550	978	-1%	-15%	17%
TRIPAS / CASINGS	3.618	1.694	2.136	1.988	898	2.213	82%	89%	-3%
SALGADAS / SALTED	265	108	2.445	402	238	1.689	-34%	-55%	45%
	<b>244.742</b>	<b>103.221</b>	<b>2.371</b>	<b>188.509</b>	<b>87.776</b>	<b>2.148</b>	<b>30%</b>	<b>18%</b>	<b>10%</b>

**2006** **2005** **%(2006x2005)**

Fevereiro / February	US\$ (000)	TONNES	US\$/Ton	US\$ (000)	TONNES	US\$/Ton	US\$ (000)	TONNES	US\$/Ton
IN NATURA / FRESH BEEF	154.620	71.203	2.172	140.269	62.613	2.240	10%	14%	-3%
INDUSTRIALIZADAS / PROCES...	46.787	13.679	3.420	38.946	15.118	2.576	20%	-10%	33%
MIÚDOS / OFFALS	4.737	4.364	1.085	4.618	4.709	981	3%	-7%	11%
TRIPAS / CASINGS	3.045	1.565	1.946	2.067	1.020	2.027	47%	53%	-4%
SALGADAS / SALTED	576	220	2.618	415	197	2.109	39%	12%	24%
	<b>209.765</b>	<b>91.030</b>	<b>2.304</b>	<b>186.315</b>	<b>83.656</b>	<b>2.227</b>	<b>13%</b>	<b>9%</b>	<b>3%</b>

**2006** **2005** **%(2006x2005)**

Março / March	US\$ (000)	TONNES	US\$/Ton	US\$ (000)	TONNES	US\$/Ton	US\$ (000)	TONNES	US\$/Ton
IN NATURA / FRESH BEEF	215.817	93.982	2.296	176.639	82.004	2.154	22%	15%	7%
INDUSTRIALIZADAS / PROCES...	60.175	18.354	3.279	45.431	17.327	2.622	32%	6%	25%
MIÚDOS / OFFALS	8.006	6.584	1.216	5.219	5.368	972	53%	23%	25%
TRIPAS / CASINGS	10.069	4.912	2.050	3.113	1.641	1.897	223%	199%	8%
SALGADAS / SALTED	1.161	395	2.940	695	336	2.071	67%	18%	42%
	<b>295.228</b>	<b>124.227</b>	<b>2.377</b>	<b>231.097</b>	<b>106.676</b>	<b>2.166</b>	<b>28%</b>	<b>16%</b>	<b>10%</b>

**2006** **2005** **%(2006x2005)**

Abril / April	US\$ (000)	TONNES	US\$/Ton	US\$ (000)	TONNES	US\$/Ton	US\$ (000)	TONNES	US\$/Ton
IN NATURA / FRESH BEEF	192.100	75.555	2.543	204.147	94.403	2.163	-6%	-20%	18%
INDUSTRIALIZADAS / PROCESSED	51.073	15.819	3.229	35.777	13.132	2.724	43%	20%	19%
MIÚDOS / OFFALS	4.900	4.349	1.127	4.201	4.635	906	17%	-6%	24%
TRIPAS / CASINGS	913	521	1.752	2.976	1.634	1.822	-69%	-68%	-4%
SALGADAS / SALTED	432	134	3.234	992	509	1.949	-56%	-74%	66%
	<b>249.418</b>	<b>96.378</b>	<b>2.588</b>	<b>248.093</b>	<b>114.312</b>	<b>2.170</b>	<b>1%</b>	<b>-16%</b>	<b>19%</b>

**2006** **2005** **%(2006x2005)**

Mai / May	US\$ (000)	TONNES	US\$/Ton	US\$ (000)	TONNES	US\$/Ton	US\$ (000)	TONNES	US\$/Ton
IN NATURA / FRESH BEEF	281.474	106.778	2.636	242.499	109.320	2.218	16%	-2%	19%
INDUSTRIALIZADAS / PROCES...	57.611	17.559	3.281	40.627	14.580	2.786	42%	20%	18%
MIÚDOS / OFFALS	6.254	5.569	1.123	5.840	5.859	997	7%	-5%	13%
TRIPAS / CASINGS	1.400	778	1.798	3.574	1.850	1.932	-61%	-58%	-7%
SALGADAS / SALTED	1.302	448	2.906	1.140	557	2.045	14%	-20%	42%
	<b>348.041</b>	<b>131.132</b>	<b>2.654</b>	<b>293.680</b>	<b>132.166</b>	<b>2.222</b>	<b>19%</b>	<b>-1%</b>	<b>19%</b>

**2006** **2005** **%(2006x2005)**

Junho / June	US\$ (000)	TONNES	US\$/Ton	US\$ (000)	TONNES	US\$/Ton	US\$ (000)	TONNES	US\$/Ton
IN NATURA / FRESH BEEF	281.295	107.660	2.613	258.432	115.117	2.245	9%	-6%	16%
INDUSTRIALIZADAS / PROCESSED	58.971	18.475	3.192	31.667	12.371	2.560	86%	49%	25%
MIÚDOS / OFFALS	6.740	5.842	1.154	5.701	5.880	969	18%	-1%	19%
TRIPAS / CASINGS	1.439	824	1.746	3.935	2.006	1.962	-63%	-59%	-11%
SALGADAS / SALTED	743	196	3.798	391	192	2.033	90%	2%	87%
	<b>349.187</b>	<b>132.996</b>	<b>2.626</b>	<b>300.126</b>	<b>135.566</b>	<b>2.214</b>	<b>16%</b>	<b>-2%</b>	<b>19%</b>



**Exportações Brasileiras de Carne Bovina  
Brazilian Beef Exports**

Fonte / Source: SECEX-MDIC

**2006** **2005** **%(2006x2005)**

Julho / July	US\$ (000)	TONNES	US\$/Ton	US\$ (000)	TONNES	US\$/Ton	US\$ (000)	TONNES	US\$/Ton
IN NATURA / FRESH BEEF	290.995	115.447	2.521	278.041	128.336	2.167	5%	-10%	16%
INDUSTRIALIZADAS / PROCES...	57.669	17.802	3.239	41.068	13.727	2.992	40%	30%	8%
MIÚDOS / OFFALS	6.953	6.229	1.116	5.376	5.479	981	29%	14%	14%
TRIPAS / CASINGS	1.253	570	2.199	3.291	1.766	1.864	-62%	-68%	18%
SALGADAS / SALTED	491	90	5.480	441	220	2.000	11%	-59%	174%
	<b>357.360</b>	<b>140.137</b>	<b>2.550</b>	<b>328.217</b>	<b>149.528</b>	<b>2.195</b>	<b>9%</b>	<b>-6%</b>	<b>16%</b>

**2006** **2005** **%(2006x2005)**

Agosto / August	US\$ (000)	TONNES	US\$/Ton	US\$ (000)	TONNES	US\$/Ton	US\$ (000)	TONNES	US\$/Ton
IN NATURA / FRESH BEEF	328.949	128.797	2.554	282.017	125.515	2.247	17%	3%	14%
INDUSTRIALIZADAS / PROCES...	65.063	20.374	3.193	49.419	15.806	3.127	32%	29%	2%
MIÚDOS / OFFALS	9.110	7.920	1.150	6.508	6.404	1.016	40%	24%	13%
TRIPAS / CASINGS	1.312	655	2.005	3.822	2.279	1.677	-66%	-71%	20%
SALGADAS / SALTED	453	105	4.328	767	352	2.177	-41%	-70%	99%
	<b>404.886</b>	<b>157.850</b>	<b>2.565</b>	<b>342.534</b>	<b>150.356</b>	<b>2.278</b>	<b>18%</b>	<b>5%</b>	<b>13%</b>

**2006** **2005** **%(2006x2005)**

Setembro / September	US\$ (000)	TONNES	US\$/Ton	US\$ (000)	TONNES	US\$/Ton	US\$ (000)	TONNES	US\$/Ton
IN NATURA / FRESH BEEF	293.558	106.113	2.766	209.757	93.847	2.235	40%	13%	24%
INDUSTRIALIZADAS / PROCES...	49.360	15.114	3.266	53.367	16.926	3.153	-8%	-11%	4%
MIÚDOS / OFFALS	10.042	8.141	1.233	5.349	5.566	961	88%	46%	28%
TRIPAS / CASINGS	1.335	597	2.237	3.883	2.398	1.619	-66%	-75%	38%
SALGADAS / SALTED	193	59	3.267	642	312	2.055	-70%	-81%	59%
	<b>354.488</b>	<b>130.025</b>	<b>2.726</b>	<b>272.999</b>	<b>119.050</b>	<b>2.293</b>	<b>30%</b>	<b>9%</b>	<b>19%</b>

**2006** **2005** **%(2006x2005)**

Outubro / October	US\$ (000)	TONNES	US\$/Ton	US\$ (000)	TONNES	US\$/Ton	US\$ (000)	TONNES	US\$/Ton
IN NATURA / FRESH BEEF	319.943	111.749	2.863	153.946	71.941	2.140	108%	55%	34%
INDUSTRIALIZADAS / PROCES...	62.062	19.788	3.136	51.501	15.474	3.328	21%	28%	-6%
MIÚDOS / OFFALS	9.564	7.012	1.364	6.140	5.246	1.170	56%	34%	17%
TRIPAS / CASINGS	2.676	1.289	2.076	5.485	3.463	1.584	-51%	-63%	31%
SALGADAS / SALTED	845	328	2.577	360	137	2.631	135%	140%	-2%
	<b>395.089</b>	<b>140.165</b>	<b>2.819</b>	<b>217.432</b>	<b>96.261</b>	<b>2.259</b>	<b>82%</b>	<b>46%</b>	<b>25%</b>

**2006** **2005** **%(2006x2005)**

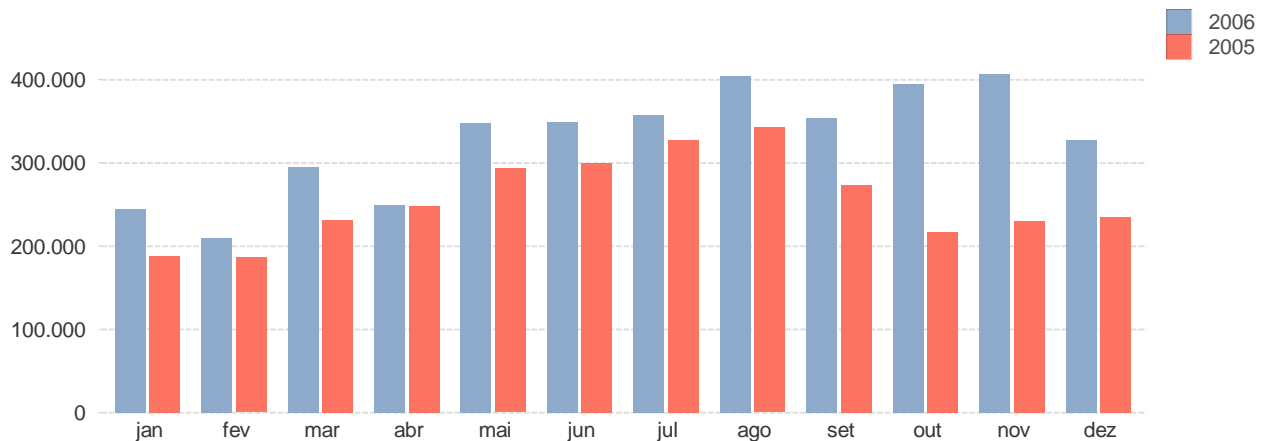
Novembro / November	US\$ (000)	TONNES	US\$/Ton	US\$ (000)	TONNES	US\$/Ton	US\$ (000)	TONNES	US\$/Ton
IN NATURA / FRESH BEEF	334.669	121.589	2.752	170.791	70.907	2.409	96%	71%	14%
INDUSTRIALIZADAS / PROCES...	56.367	17.702	3.184	49.749	14.223	3.498	13%	24%	-9%
MIÚDOS / OFFALS	11.446	7.801	1.467	4.523	4.077	1.109	153%	91%	32%
TRIPAS / CASINGS	3.659	1.601	2.285	5.015	3.190	1.572	-27%	-50%	45%
SALGADAS / SALTED	1.270	473	2.687	300	82	3.661	323%	477%	-27%
	<b>407.410</b>	<b>149.166</b>	<b>2.731</b>	<b>230.378</b>	<b>92.479</b>	<b>2.491</b>	<b>77%</b>	<b>61%</b>	<b>10%</b>

**2006** **2005** **%(2006x2005)**

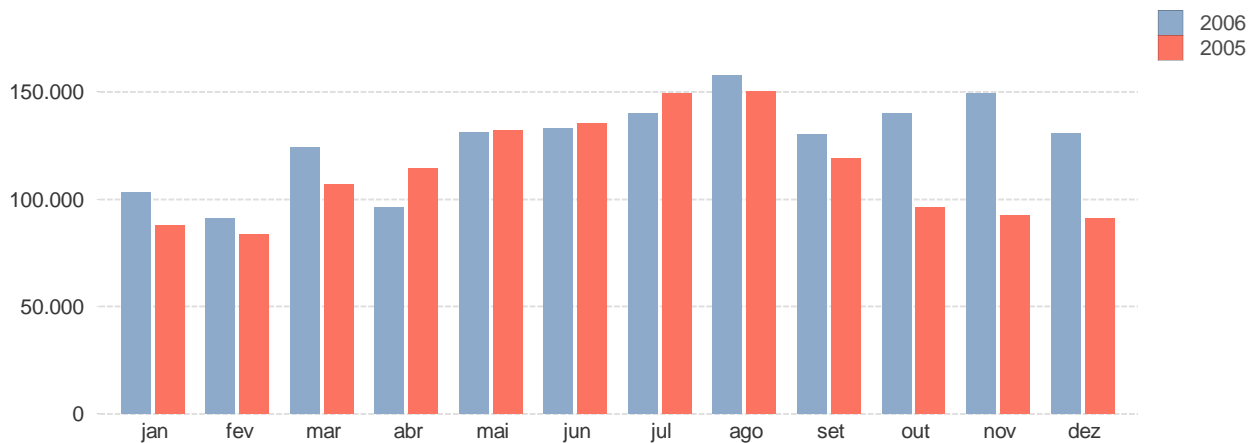
Dezembro / December	US\$ (000)	TONNES	US\$/Ton	US\$ (000)	TONNES	US\$/Ton	US\$ (000)	TONNES	US\$/Ton
IN NATURA / FRESH BEEF	260.411	105.633	2.465	161.977	66.009	2.454	61%	60%	0%
INDUSTRIALIZADAS / PROCES...	54.133	16.205	3.341	61.163	17.213	3.553	-11%	-6%	-6%
MIÚDOS / OFFALS	9.837	7.122	1.381	5.171	4.345	1.190	90%	64%	16%
TRIPAS / CASINGS	2.758	1.408	1.958	6.476	3.254	1.990	-57%	-57%	-2%
SALGADAS / SALTED	664	246	2.694	153	29	5.213	335%	742%	-48%
	<b>327.802</b>	<b>130.614</b>	<b>2.510</b>	<b>234.938</b>	<b>90.851</b>	<b>2.586</b>	<b>40%</b>	<b>44%</b>	<b>-3%</b>

**EVOLUÇÃO DAS EXPORTAÇÕES DE CARNE BOVINA DO BRASIL  
 BRAZILIAN BEEF EXPORTS**

**US\$ (000)**



**TON**



**jan 2006 - dez 2006**

Mes / Month	jan	fev	mar	abr	mai	jun	jul	ago	set	out	nov	dez
US\$ (000)	244.742	209.765	295.228	249.418	348.041	349.187	357.360	404.886	354.488	395.089	407.410	327.802
TONNES	103.221	91.030	124.227	96.378	131.132	132.996	140.137	157.850	130.025	140.165	149.166	130.614
US\$/Ton	2.371	2.304	2.377	2.588	2.654	2.626	2.550	2.565	2.726	2.819	2.731	2.510

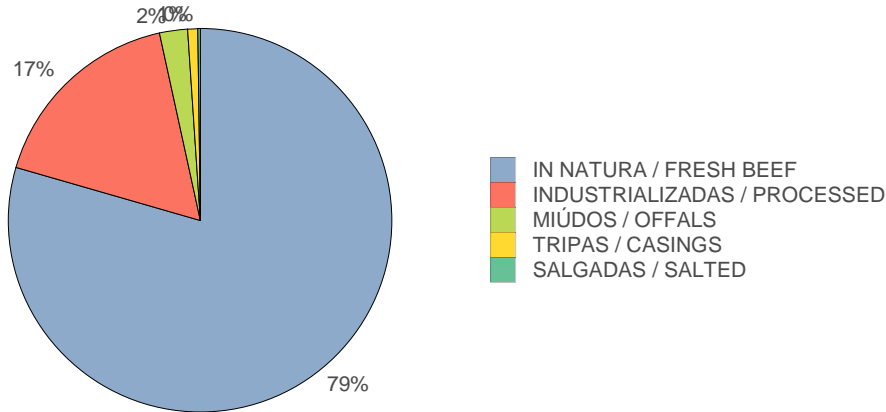


**Exportações Brasileiras de Carne Bovina  
Brazilian Beef Exports  
Fonte / Source: SECEX-MDIC**

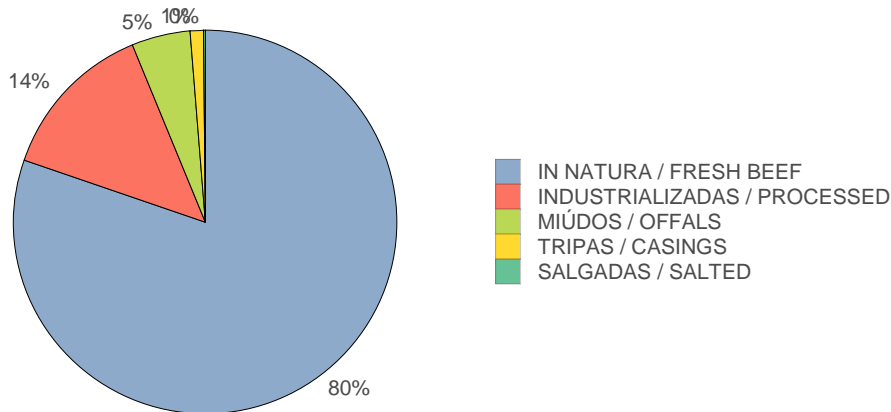
Produto / Product	jan 2006 - dez 2006			jan 2005 - dez 2005			% (2006x2005)		
	US\$ (000)	TONNES	US\$/Ton	US\$ (000)	TONNES	US\$/Ton	US\$ (000)	TONNES	US\$/Ton
IN NATURA / FRESH BEEF	3.134.506	1.225.423	2.558	2.419.111	1.085.591	2.228	30%	13%	15%
INDUSTRIALIZADAS / PROCESSED	674.067	206.654	3.262	538.810	181.409	2.970	25%	14%	10%
MIÚDOS / OFFALS	92.975	75.650	1.229	64.075	63.119	1.015	45%	20%	21%
TRIPAS / CASINGS	33.476	16.413	2.040	45.624	25.398	1.796	-27%	-35%	14%
SALGADAS / SALTED	8.394	2.800	2.997	6.696	3.162	2.118	25%	-11%	42%
	<b>3.943.417</b>	<b>1.526.941</b>	<b>2.583</b>	<b>3.074.317</b>	<b>1.358.679</b>	<b>2.263</b>	<b>28%</b>	<b>12%</b>	<b>14%</b>

**EXPORTAÇÕES DE CARNE BOVINA DO BRASIL POR PRODUTOS  
BRAZILIAN BEEF EXPORTS PER PRODUCTS**

**US\$**



**TON**





**Exportações Brasileiras de Carne Bovina**  
**Brazilian Beef Exports**  
**Fonte / Source: SECEX-MDIC**  
**IN NATURA / FRESH BEEF**

Destino / Country	ian 2006 - dez 2006			ian 2005 - dez 2005			%(2006x2005)		
	US\$ (000)	TONNES	US\$/Ton	US\$ (000)	TONNES	US\$/Ton	US\$ (000)	TONNES	US\$/Ton
RUSSIA	743.188	318.324	2.335	555.273	294.653	1.884	34%	8%	24%
EGYPT	364.185	198.147	1.838	252.714	146.444	1.726	44%	35%	7%
NETHERLANDS	253.562	45.751	5.542	191.486	41.723	4.589	32%	10%	21%
ITALY	232.563	48.847	4.761	152.685	46.893	3.256	52%	4%	46%
UNITED KINGDOM	189.579	62.406	3.038	181.661	65.936	2.755	4%	-5%	10%
IRAN	107.234	44.985	2.384	11.837	6.908	1.713	806%	551%	39%
ALGERIA	101.707	47.329	2.149	75.693	41.986	1.803	34%	13%	19%
BULGARIA	101.562	56.659	1.793	69.424	44.497	1.560	46%	27%	15%
GERMANY	96.201	15.961	6.027	79.706	17.631	4.521	21%	-9%	33%
SAUDI ARABIA	80.983	38.501	2.103	57.686	27.833	2.073	40%	38%	1%
ISRAEL	69.423	30.658	2.264	37.863	20.646	1.834	83%	48%	23%
HONG KONG	61.122	27.599	2.215	43.738	22.205	1.970	40%	24%	12%
ROMANIA	48.921	33.686	1.452	37.832	23.523	1.608	29%	43%	-10%
SWITZERLAND	46.349	9.088	5.100	36.693	8.800	4.170	26%	3%	22%
CANARY, ISLANDS	43.780	9.292	4.712	13.220	3.367	3.927	231%	176%	20%
LEBANON	43.017	17.387	2.474	30.741	13.186	2.331	40%	32%	6%
PHILIPPINES	42.260	27.883	1.516	31.076	19.820	1.568	36%	41%	-3%
SWEDEN	42.114	5.835	7.218	32.328	5.828	5.547	30%	0%	30%
SPAIN	40.896	10.102	4.048	56.608	15.285	3.703	-28%	-34%	9%
LIBYA	37.965	20.611	1.842	26.963	15.206	1.773	41%	36%	4%
VENEZUELA	33.724	13.536	2.491	19.277	9.142	2.109	75%	48%	18%
UNITED ARAB EMIRATES	28.305	10.630	2.663	18.013	7.141	2.523	57%	49%	6%
SINGAPORE	24.774	11.398	2.174	23.612	11.632	2.030	5%	-2%	7%
PORTUGAL	24.562	4.804	5.112	14.842	3.758	3.949	65%	28%	29%
FRANCE	20.208	5.380	3.756	19.744	7.104	2.779	2%	-24%	35%
UKRAINE	19.158	11.814	1.622	33.188	20.090	1.652	-42%	-41%	-2%
CHILE	18.643	5.334	3.495	139.982	66.597	2.102	-87%	-92%	66%
IRELAND	18.101	4.956	3.653	19.483	6.840	2.848	-7%	-28%	28%
ANGOLA	17.370	7.606	2.284	9.957	4.762	2.091	74%	60%	9%
DENMARK	16.860	2.897	5.820	11.177	2.484	4.499	51%	17%	29%
FINLAND	15.592	1.805	8.638	13.255	1.766	7.506	18%	2%	15%
KAZAKHSTAN	11.277	6.563	1.718	1.044	572	1.823	980%	1.046%	-6%
CROATIA	9.935	5.517	1.801	5.617	2.749	2.043	77%	101%	-12%
BOSNIA AND HERZEGOVINA	9.932	5.696	1.744	229	124	1.852	4.240%	4.510%	-6%
MACEDONIA	9.704	5.322	1.823	6.044	3.337	1.811	61%	59%	1%
KUWAIT	8.983	4.597	1.954	8.307	4.377	1.898	8%	5%	3%
YUGOSLAVIA	6.747	3.118	2.164	2.846	1.474	1.931	137%	112%	12%
JORDAN	6.288	3.395	1.852	3.419	2.003	1.707	84%	70%	8%
ALBANIA	6.006	3.101	1.937	4.626	2.136	2.166	30%	45%	-11%
MALAYSIA	5.547	2.758	2.011	6.758	3.671	1.841	-18%	-25%	9%
URUGUAY	5.453	2.603	2.095	7.551	4.122	1.832	-28%	-37%	14%
GREECE	5.315	2.669	1.991	8.281	3.772	2.195	-36%	-29%	-9%
MOLDOVA	5.310	2.728	1.947	3.006	1.741	1.727	77%	57%	13%
NORWAY	3.762	754	4.992	7.607	1.258	6.049	-51%	-40%	-17%
<b>TOTAL</b>	<b>3.134.506</b>	<b>1.225.423</b>	<b>2.558</b>	<b>2.419.111</b>	<b>1.085.591</b>	<b>2.228</b>	<b>30%</b>	<b>13%</b>	<b>15%</b>



**Exportações Brasileiras de Carne Bovina**  
**Brazilian Beef Exports**  
**Fonte / Source: SECEX-MDIC**  
**IN NATURA / FRESH BEEF**

ian 2006 - dez 2006

ian 2005 - dez 2005

%(2006x2005)

Destino / Country	US\$ (000)	TONNES	US\$/Ton	US\$ (000)	TONNES	US\$/Ton	US\$ (000)	TONNES	US\$/Ton
BELGIUM	3.717	577	6.445	3.849	656	5.868	-3%	-12%	10%
QATAR	3.563	1.242	2.869	1.745	705	2.475	104%	76%	16%
COTE D'IVOIRE	3.265	2.601	1.255	2.240	1.817	1.233	46%	43%	2%
LITHUANIA	3.039	1.455	2.089	1.033	723	1.427	194%	101%	46%
GABON	2.995	2.191	1.367	1.926	1.368	1.408	56%	60%	-3%
ARUBA	2.896	1.192	2.430	869	396	2.195	233%	201%	11%
NETHERLANDS ANTILLES	2.879	1.358	2.120	929	482	1.925	210%	182%	10%
TUNISIA	2.602	1.055	2.466	0	0	-	-	-	-
GHANA	2.525	1.955	1.291	1.016	665	1.527	149%	194%	-15%
BAHREIN	2.502	886	2.824	1.530	648	2.361	64%	37%	20%
TURKEY	2.201	813	2.707	340	126	2.695	547%	544%	0%
PERU	1.934	1.110	1.741	722	581	1.243	168%	91%	40%
LIBERIA	1.440	1.054	1.366	179	90	1.997	705%	1.077%	-32%
SENEGAL	1.256	662	1.897	562	332	1.691	124%	99%	12%
MALTA	1.105	191	5.781	1.752	331	5.297	-37%	-42%	9%
GEORGIA	1.070	761	1.406	113	75	1.500	849%	912%	-6%
EQUATORIAL GUINEA	1.047	475	2.206	1.260	335	3.756	-17%	42%	-41%
CAPE VERDE	1.002	308	3.259	547	170	3.220	83%	81%	1%
SERBIA	988	412	2.400	0	0	-	-	-	-
COMOROS	910	695	1.311	1.440	986	1.461	-37%	-30%	-10%
SYRIA	867	312	2.776	0	0	-	-	-	-
SRI LANKA	773	247	3.133	208	74	2.807	271%	232%	12%
MOZAMBIQUE	739	391	1.890	933	538	1.734	-21%	-27%	9%
NAMIBIA	676	576	1.173	85	84	1.012	695%	586%	16%
UNITED STATES	669	394	1.699	293	150	1.956	129%	163%	-13%
HAITI	644	255	2.528	389	170	2.284	66%	50%	11%
BRUNEI	558	581	960	236	234	1.007	137%	148%	-5%
IRAQ	548	274	2.002	0	0	-	-	-	-
CONGO	514	325	1.585	124	56	2.226	316%	484%	-29%
GUINEA	504	109	4.641	194	37	5.300	159%	196%	-12%
OMAN	498	156	3.191	264	78	3.391	89%	100%	-6%
LATVIA	464	250	1.855	316	175	1.804	47%	43%	3%
CYPRUS	438	216	2.022	1.585	415	3.824	-72%	-48%	-47%
MALDIVES	415	136	3.050	213	87	2.444	95%	56%	25%
BERMUDA	397	184	2.160	388	201	1.932	2%	-9%	12%
AFGHANISTAN	375	76	4.965	78	25	3.113	383%	203%	59%
ESTONIA	335	178	1.879	70	25	2.800	378%	612%	-33%
POLAND	312	157	1.996	3.405	1.927	1.767	-91%	-92%	13%
GAMBIA	283	88	3.225	144	71	2.033	96%	24%	59%
MAURITIUS	277	76	3.628	915	374	2.442	-70%	-80%	49%
HUNGARY	258	75	3.433	209	75	2.768	23%	-1%	24%
MONACO	257	97	2.639	293	95	3.074	-12%	2%	-14%
SURINAME	210	101	2.093	0	0	-	-	-	-
AUSTRALIA	200	75	2.670	124	71	1.749	61%	6%	53%
<b>TOTAL</b>	<b>3.134.506</b>	<b>1.225.423</b>	<b>2.558</b>	<b>2.419.111</b>	<b>1.085.591</b>	<b>2.228</b>	<b>30%</b>	<b>13%</b>	<b>15%</b>



**Exportações Brasileiras de Carne Bovina**  
**Brazilian Beef Exports**  
**Fonte / Source: SECEX-MDIC**  
**IN NATURA / FRESH BEEF**

**ian 2006 - dez 2006**

**ian 2005 - dez 2005**

**%(2006x2005)**

Destino / Country	US\$ (000)	TONNES	US\$/Ton	US\$ (000)	TONNES	US\$/Ton	US\$ (000)	TONNES	US\$/Ton
FAROE ISLANDS	190	47	4.023	75	23	3.351	151%	109%	20%
SLOVENIA	160	100	1.602	35	25	1.400	357%	299%	14%
KENYA	158	70	2.251	48	23	2.094	229%	206%	7%
GRENADA	152	88	1.723	95	57	1.686	59%	56%	2%
DEMOCRATIC REPUBLIC OF THE C...	143	173	827	214	98	2.187	-33%	77%	-62%
SOUTH AFRICA	139	104	1.341	16.399	10.913	1.503	-99%	-99%	-11%
CHINA	119	69	1.737	152	107	1.429	-22%	-36%	22%
ARMENIA	105	51	2.053	45	25	1.785	135%	104%	15%
CAMEROON	98	24	4.045	20	15	1.400	382%	67%	189%
NEW ZEALAND	93	50	1.852	0	0	-	-	-	-
TANZANIA	85	25	3.376	0	0	-	-	-	-
CANADA	82	25	3.284	0	0	-	-	-	-
CZECH REPUBLIC	76	11	6.953	0	0	-	-	-	-
SÃO TOME AND PRINCIPE	72	24	2.934	26	8	3.202	176%	201%	-8%
YEMEN	68	23	2.942	0	0	-	-	-	-
SEYCHELLES	59	25	2.401	91	37	2.461	-34%	-33%	-2%
FRENCH GUYANA	58	26	2.263	25	14	1.800	128%	81%	26%
GIBRALTAR	55	13	4.163	236	49	4.804	-77%	-73%	-13%
NIGERIA	54	10	5.344	0	0	-	-	-	-
ARGENTINA	50	25	1.999	55	22	2.527	-11%	13%	-21%
SOUTH KOREA	49	24	2.050	3.752	2.436	1.540	-99%	-99%	33%
VIRGIN ISLANDS (UK)	47	26	1.832	424	239	1.776	-89%	-89%	3%
GUATEMALA	46	25	1.856	0	0	-	-	-	-
SIERRA LEONE	33	13	2.579	0	0	-	-	-	-
PAKISTAN	0	0	-	57	12	4.750	-100%	-100%	-
UZBEKISTAN	0	0	-	888	476	1.867	-100%	-100%	-
TAJIKISTAN	0	0	-	148	99	1.488	-100%	-100%	-
TAIWAN	0	0	-	314	195	1.614	-100%	-100%	-
SAINT VICENT AND THE GRANADINES	0	0	-	36	23	1.550	-100%	-100%	-
NORTH KOREA	0	0	-	122	94	1.300	-100%	-100%	-
DJIBOUTI	0	0	-	28	7	3.968	-100%	-100%	-
BAHAMAS	0	0	-	154	99	1.559	-100%	-100%	-
CAYMAN ISLANDS	0	0	-	49	25	1.929	-100%	-100%	-
MACAO	0	0	-	15	2	6.148	-100%	-100%	-
<b>TOTAL</b>	<b>3.134.506</b>	<b>1.225.423</b>	<b>2.558</b>	<b>2.419.111</b>	<b>1.085.591</b>	<b>2.228</b>	<b>30%</b>	<b>13%</b>	<b>15%</b>





Exportações Brasileiras de Carne Bovina  
Brazilian Beef Exports  
Fonte / Source: SECEX-MDIC  
**INDUSTRIALIZADAS / PROCESSED**

Destino / Country	ian 2006 - dez 2006			ian 2005 - dez 2005			% (2006x2005)		
	US\$ (000)	TONNES	US\$/Ton	US\$ (000)	TONNES	US\$/Ton	US\$ (000)	TONNES	US\$/Ton
UNITED STATES	276.494	63.400	4.361	207.081	51.854	3.994	34%	22%	9%
UNITED KINGDOM	139.996	51.299	2.729	130.634	52.547	2.486	7%	-2%	10%
NETHERLANDS	48.393	14.944	3.238	25.803	9.042	2.854	88%	65%	13%
ITALY	36.599	8.872	4.125	31.649	8.265	3.829	16%	7%	8%
CUBA	22.615	9.887	2.287	1.984	1.436	1.382	1.040%	588%	66%
GERMANY	18.021	5.497	3.278	16.540	5.486	3.015	9%	0%	9%
JAPAN	8.929	2.440	3.659	13.891	3.660	3.795	-36%	-33%	-4%
FRANCE	8.900	3.078	2.892	8.817	3.228	2.731	1%	-5%	6%
BELGIUM	8.307	2.907	2.857	12.314	4.185	2.943	-33%	-31%	-3%
PUERTO RICO	8.251	3.135	2.632	4.025	1.589	2.532	105%	97%	4%
IRAQ	7.734	4.069	1.901	97	51	1.887	7.871%	7.815%	1%
EGYPT	7.670	3.120	2.458	5.393	2.622	2.057	42%	19%	20%
UNITED ARAB EMIRATES	6.580	3.175	2.072	2.416	1.363	1.773	172%	133%	17%
SWEDEN	6.259	2.630	2.380	3.523	1.673	2.107	78%	57%	13%
IRELAND	6.212	1.311	4.737	4.589	1.133	4.050	35%	16%	17%
JAMAICA	6.023	2.536	2.375	11.336	4.942	2.294	-47%	-49%	4%
SAUDI ARABIA	5.491	2.207	2.488	2.170	1.069	2.030	153%	106%	23%
JORDAN	4.729	2.071	2.284	6.024	3.180	1.894	-21%	-35%	21%
LEBANON	4.691	2.558	1.834	4.302	2.504	1.718	9%	2%	7%
CANADA	4.238	1.647	2.573	9.911	4.168	2.378	-57%	-60%	8%
KUWAIT	3.506	1.767	1.984	2.353	1.344	1.751	49%	31%	13%
PHILIPPINES	2.330	1.040	2.239	1.856	937	1.981	26%	11%	13%
TRINIDAD AND TOBAGO	2.116	982	2.155	3.886	2.098	1.852	-46%	-53%	16%
MALTA	1.893	705	2.686	2.557	1.101	2.322	-26%	-36%	16%
CANARY, ISLANDS	1.567	570	2.751	784	321	2.447	100%	78%	12%
ISRAEL	1.381	627	2.203	3.706	1.783	2.078	-63%	-65%	6%
TANZANIA	1.351	567	2.384	75	34	2.199	1.692%	1.554%	8%
SWITZERLAND	1.202	295	4.082	927	253	3.661	30%	16%	11%
CONGO	1.001	433	2.311	439	218	2.011	128%	98%	15%
ANGOLA	998	686	1.454	1.229	704	1.745	-19%	-3%	-17%
SOUTH KOREA	989	162	6.116	948	226	4.202	4%	-28%	46%
MAURITIUS	973	361	2.694	927	398	2.331	5%	-9%	16%
SINGAPORE	882	374	2.357	763	380	2.011	15%	-1%	17%
BAHAMAS	864	417	2.072	1.064	594	1.792	-19%	-30%	16%
SPAIN	846	224	3.776	1.217	385	3.159	-30%	-42%	20%
NORWAY	827	189	4.364	466	113	4.119	77%	67%	6%
QATAR	752	337	2.228	412	202	2.040	82%	67%	9%
MEXICO	744	306	2.433	331	150	2.212	125%	104%	10%
NEW ZEALAND	736	200	3.687	629	167	3.755	17%	19%	-2%
OMAN	730	387	1.890	718	423	1.697	2%	-9%	11%
BARBADOS	697	311	2.244	773	392	1.972	-10%	-21%	14%
NETHERLANDS ANTILLES	642	276	2.327	367	178	2.059	75%	55%	13%
SAINT VICENT AND THE GRANADINES	455	187	2.431	314	149	2.104	45%	25%	16%
SOUTH AFRICA	444	136	3.263	26	16	1.680	1.600%	775%	94%
	<b>674.067</b>	<b>206.654</b>	<b>3.262</b>	<b>538.810</b>	<b>181.409</b>	<b>2.970</b>	<b>25%</b>	<b>14%</b>	<b>10%</b>



Exportações Brasileiras de Carne Bovina  
Brazilian Beef Exports  
Fonte / Source: SECEX-MDIC  
**INDUSTRIALIZADAS / PROCESSED**

Destino / Country	ian 2006 - dez 2006			ian 2005 - dez 2005			% (2006x2005)		
	US\$ (000)	TONNES	US\$/Ton	US\$ (000)	TONNES	US\$/Ton	US\$ (000)	TONNES	US\$/Ton
FINLAND	429	106	4.047	57	13	4.206	658%	688%	-4%
KENYA	408	192	2.122	581	302	1.928	-30%	-36%	10%
SAINT LUCIA	403	159	2.537	238	116	2.056	69%	37%	23%
BELIZE	394	169	2.334	322	156	2.066	23%	9%	13%
GHANA	388	175	2.223	390	172	2.262	-1%	1%	-2%
GREECE	385	147	2.623	451	226	1.992	-15%	-35%	32%
AUSTRALIA	350	117	3.000	547	256	2.136	-36%	-54%	40%
PARAGUAY	344	191	1.804	222	139	1.599	55%	38%	13%
CHILE	329	79	4.141	744	474	1.569	-56%	-83%	164%
GUYANA	322	166	1.945	144	90	1.590	124%	83%	22%
ANTIGUA AND BARBUDA	296	126	2.341	331	157	2.111	-11%	-19%	11%
CYPRUS	283	120	2.352	437	194	2.248	-35%	-38%	5%
HONG KONG	273	196	1.396	405	265	1.526	-33%	-26%	-9%
ALGERIA	253	110	2.314	164	89	1.843	54%	23%	26%
DOMINICA ISLAND	252	106	2.375	172	86	1.989	47%	23%	19%
SAMOA	249	87	2.843	54	18	3.002	361%	387%	-5%
GRENADA	235	100	2.361	346	157	2.205	-32%	-36%	7%
TURKEY	230	119	1.930	0	0	-	-	-	-
SYRIA	215	118	1.826	0	0	-	-	-	-
COLOMBIA	190	36	5.277	34	5	6.705	451%	600%	-21%
ARUBA	188	73	2.583	200	92	2.165	-6%	-21%	19%
BAHREIN	186	81	2.314	206	110	1.881	-10%	-27%	23%
PANAMA	183	83	2.199	122	64	1.914	50%	31%	15%
SURINAME	179	84	2.131	152	84	1.814	18%	0%	17%
CAYMAN ISLANDS	172	75	2.308	205	99	2.075	-16%	-24%	11%
PERU	171	30	5.759	92	20	4.610	86%	49%	25%
PAKISTAN	170	60	2.851	0	0	-	-	-	-
URUGUAY	166	84	1.973	92	51	1.803	80%	65%	9%
BENIN	166	88	1.891	76	39	1.961	118%	126%	-4%
SEYCHELLES	160	74	2.175	43	19	2.309	269%	292%	-6%
AUSTRIA	139	47	2.960	0	0	-	-	-	-
MONACO	115	36	3.227	82	34	2.396	40%	4%	35%
BOLIVIA	112	76	1.464	262	174	1.509	-58%	-56%	-3%
PAPUA NEW GUINEA	104	51	2.028	0	0	-	-	-	-
FRENCH POLYNESIA	101	34	3.002	79	34	2.304	28%	-2%	30%
VENEZUELA	94	18	5.384	67	15	4.459	42%	17%	21%
VIRGIN ISLANDS (UK)	90	39	2.331	36	18	2.068	148%	120%	13%
THAILAND	89	23	3.902	71	17	4.134	26%	34%	-6%
PORTUGAL	89	52	1.727	134	92	1.458	-34%	-44%	18%
KIRIBATI	89	38	2.326	159	76	2.101	-44%	-50%	11%
YUGOSLAVIA	83	70	1.190	5	6	807	1.624%	1.068%	48%
MICRONESIA	83	34	2.426	91	51	1.766	-9%	-34%	37%
BERMUDA	79	35	2.264	59	32	1.861	34%	10%	22%
SENEGAL	78	65	1.210	63	44	1.425	24%	46%	-15%
	<b>674.067</b>	<b>206.654</b>	<b>3.262</b>	<b>538.810</b>	<b>181.409</b>	<b>2.970</b>	<b>25%</b>	<b>14%</b>	<b>10%</b>



Exportações Brasileiras de Carne Bovina  
 Brazilian Beef Exports  
 Fonte / Source: SECEX-MDIC  
**INDUSTRIALIZADAS / PROCESSED**

Destino / Country	ian 2006 - dez 2006			ian 2005 - dez 2005			% (2006x2005)		
	US\$ (000)	TONNES	US\$/Ton	US\$ (000)	TONNES	US\$/Ton	US\$ (000)	TONNES	US\$/Ton
LIBERIA	70	40	1.749	65	37	1.757	8%	8%	-0%
HAITI	67	37	1.826	0	0	-	-	-	-
NAMIBIA	60	37	1.618	22	15	1.429	174%	142%	13%
GAMBIA	60	38	1.553	110	79	1.400	-46%	-51%	11%
CAPE VERDE	58	36	1.588	129	85	1.524	-55%	-57%	4%
DEMOCRATIC REPUBLIC OF THE C...	50	27	1.880	18	10	1.694	181%	153%	11%
DENMARK	48	18	2.626	128	54	2.385	-63%	-66%	10%
ROMANIA	40	25	1.604	0	0	-	-	-	-
POLAND	40	25	1.600	0	0	-	-	-	-
GUADELOUPE	36	16	2.296	0	0	-	-	-	-
BULGARIA	35	25	1.396	0	0	-	-	-	-
SLOVAKIA	30	8	3.751	0	0	-	-	-	-
TAIWAN	22	3	6.472	0	0	-	-	-	-
YEMEN	22	10	2.198	0	0	-	-	-	-
GUINEA	21	14	1.582	0	0	-	-	-	-
ECUADOR	12	2	5.720	20	4	5.051	-43%	-49%	13%
RUSSIA	11	3	3.992	170	9	19.001	-94%	-70%	-79%
ANGUILLA	4	2	2.402	0	0	-	-	-	-
EQUATORIAL GUINEA	1	1	1.559	0	0	-	-	-	-
TURKS AND CAICOS, ISLANDS	0	0	-	9	5	1.925	-100%	-100%	-
UKRAINE	0	0	-	29	23	1.250	-100%	-100%	-
ZIMBABWE	0	0	-	50	32	1.547	-100%	-100%	-
ZAMBIA	0	0	-	25	16	1.547	-100%	-100%	-
SIERRA LEONE	0	0	-	35	20	1.743	-100%	-100%	-
CZECH REPUBLIC	0	0	-	3	0	25.941	-100%	-100%	-
CHINA	0	0	-	104	19	5.338	-100%	-100%	-
DJIBOUTI	0	0	-	1	0	1.260	-100%	-100%	-
AZERBAIJAN	0	0	-	0	0	733	-100%	-100%	-
ALBANIA	0	0	-	1	2	682	-100%	-100%	-
GABON	0	0	-	32	17	1.959	-100%	-100%	-
CAMEROON	0	0	-	21	11	1.912	-100%	-100%	-
BRUNEI	0	0	-	32	12	2.622	-100%	-100%	-
MADAGASCAR	0	0	-	75	34	2.222	-100%	-100%	-
MOZAMBIQUE	0	0	-	344	182	1.892	-100%	-100%	-
GIBRALTAR	0	0	-	29	15	1.930	-100%	-100%	-
INDONESIA	0	0	-	75	34	2.201	-100%	-100%	-
GUAM	0	0	-	39	18	2.181	-100%	-100%	-
GEORGIA	0	0	-	0	0	733	-100%	-100%	-
LATVIA	0	0	-	40	25	1.598	-100%	-100%	-
	<b>674.067</b>	<b>206.654</b>	<b>3.262</b>	<b>538.810</b>	<b>181.409</b>	<b>2.970</b>	<b>25%</b>	<b>14%</b>	<b>10%</b>



Exportações Brasileiras de Carne Bovina  
 Brazilian Beef Exports  
 Fonte / Source: SECEX-MDIC  
 MIÚDOS / OFFALS

Destino / Country	ian 2006 - dez 2006			ian 2005 - dez 2005			% (2006x2005)		
	US\$ (000)	TONNES	US\$/Ton	US\$ (000)	TONNES	US\$/Ton	US\$ (000)	TONNES	US\$/Ton
HONG KONG	49.169	39.790	1.236	30.357	32.248	941	62%	23%	31%
RUSSIA	13.048	7.568	1.724	9.532	7.702	1.238	37%	-2%	39%
EGYPT	4.624	5.740	805	3.739	3.474	1.076	24%	65%	-25%
COTE D'IVORE	3.648	5.265	693	1.527	3.292	464	139%	60%	49%
KAZAKHSTAN	3.491	2.349	1.486	846	524	1.613	313%	348%	-8%
PERU	3.024	3.386	893	2.710	4.561	594	12%	-26%	50%
FRANCE	2.109	711	2.964	3.282	977	3.360	-36%	-27%	-12%
ISRAEL	1.708	1.317	1.296	1.864	1.535	1.215	-8%	-14%	7%
SAUDI ARABIA	1.255	953	1.317	579	522	1.108	117%	82%	19%
SWITZERLAND	1.154	497	2.323	386	254	1.517	199%	95%	53%
UNITED ARAB EMIRATES	693	452	1.534	390	313	1.247	78%	44%	23%
NETHERLANDS	642	197	3.250	471	219	2.150	36%	-10%	51%
CHINA	622	581	1.070	2.219	1.735	1.279	-72%	-66%	-16%
GABON	554	654	846	24	62	390	2.202%	962%	117%
UKRAINE	531	394	1.346	489	387	1.263	8%	2%	7%
MOLDOVA	506	444	1.140	142	102	1.391	257%	335%	-18%
MOZAMBIQUE	439	289	1.520	0	0	-	-	-	-
ANGOLA	429	418	1.027	272	251	1.083	58%	67%	-5%
NETHERLANDS ANTILLES	357	210	1.694	131	93	1.406	172%	125%	21%
LATVIA	349	226	1.542	176	104	1.684	98%	117%	-8%
ROMANIA	345	274	1.259	0	0	-	-	-	-
PORTUGAL	263	219	1.198	130	111	1.169	102%	97%	2%
YUGOSLAVIA	258	423	608	86	135	635	201%	214%	-4%
SOUTH AFRICA	231	272	850	246	287	855	-6%	-5%	-1%
EQUATORIAL GUINEA	222	126	1.770	1	1	1.214	17.821%	12.196%	46%
LITHUANIA	217	126	1.720	1.035	749	1.382	-79%	-83%	25%
UNITED STATES	190	131	1.459	111	82	1.353	72%	60%	8%
ARUBA	188	124	1.522	50	36	1.390	274%	242%	10%
KUWAIT	186	170	1.093	134	123	1.092	38%	38%	0%
GEORGIA	185	100	1.850	58	50	1.150	221%	100%	61%
SPAIN	183	133	1.374	58	49	1.196	213%	173%	15%
AZERBAIJAN	160	100	1.588	0	0	-	-	-	-
GHANA	145	301	481	19	51	381	644%	489%	26%
SINGAPORE	144	116	1.241	104	112	928	39%	4%	34%
ITALY	128	98	1.305	123	94	1.301	4%	3%	0%
DEMOCRATIC REPUBLIC OF THE C...	121	147	825	0	0	-	-	-	-
KYRGYZSTAN	117	76	1.533	0	0	-	-	-	-
UNITED KINGDOM	111	93	1.199	36	76	469	211%	22%	156%
CONGO	107	157	682	24	34	711	338%	357%	-4%
BERMUDA	101	53	1.923	64	42	1.499	59%	24%	28%
LIBYA	98	100	981	0	0	-	-	-	-
QATAR	91	56	1.634	51	36	1.411	80%	55%	16%
JORDAN	86	125	691	82	100	825	5%	25%	-16%
LEBANON	85	102	836	103	199	518	-17%	-49%	61%
	<b>92.975</b>	<b>75.650</b>	<b>1.229</b>	<b>64.075</b>	<b>63.119</b>	<b>1.015</b>	<b>45%</b>	<b>20%</b>	<b>21%</b>



**Exportações Brasileiras de Carne Bovina**  
**Brazilian Beef Exports**  
**Fonte / Source: SECEX-MDIC**  
**MIÚDOS / OFFALS**

ian 2006 - dez 2006

ian 2005 - dez 2005

%(2006x2005)

Destino / Country	US\$ (000)	TONNES	US\$/Ton	US\$ (000)	TONNES	US\$/Ton	US\$ (000)	TONNES	US\$/Ton
SERBIA	82	110	744	0	0	-	-	-	-
BRUNEI	81	59	1.376	33	19	1.749	147%	213%	-21%
POLAND	78	49	1.576	181	152	1.193	-57%	-67%	32%
TURKEY	63	38	1.658	1	1	1.527	7.109%	6.541%	9%
PARAGUAY	61	28	2.192	113	71	1.590	-46%	-61%	38%
GREECE	49	51	968	28	51	555	74%	-0%	74%
UZBEKISTAN	46	25	1.830	35	25	1.400	31%	-0%	31%
ALBANIA	42	84	505	204	375	545	-79%	-78%	-7%
MACEDONIA	28	25	1.120	13	25	500	124%	0%	124%
GRENADA	24	20	1.187	23	22	1.050	4%	-8%	13%
URUGUAY	20	15	1.393	15	25	600	35%	-42%	132%
MEXICO	20	20	1.022	0	0	-	-	-	-
SURINAME	17	25	675	0	0	-	-	-	-
OMAN	16	9	1.707	12	10	1.217	28%	-8%	40%
BAHREIN	11	6	1.895	57	57	1.002	-80%	-90%	89%
ALGERIA	10	9	1.126	4	2	1.826	161%	323%	-38%
CAPE VERDE	7	5	1.386	8	6	1.440	-13%	-10%	-4%
CROATIA	3	4	700	0	0	-	-	-	-
HAITI	1	1	949	0	0	-	-	-	-
GAMBIA	1	1	1.402	0	0	-	-	-	-
SENEGAL	0	1	851	0	0	-	-	-	-
MALAYSIA	0	0	1.531	61	48	1.258	-99%	-99%	22%
SIERRA LEONE	0	0	861	0	0	-	-	-	-
GERMANY	0	0	-	110	179	615	-100%	-100%	-
PUERTO RICO	0	0	-	18	16	1.099	-100%	-100%	-
CZECH REPUBLIC	0	0	-	15	26	580	-100%	-100%	-
VIETNAM	0	0	-	15	25	587	-100%	-100%	-
SEYCHELLES	0	0	-	3	2	1.511	-100%	-100%	-
SAINT VICENT AND THE GRANADINES	0	0	-	2	1	1.450	-100%	-100%	-
SÃO TOME AND PRINCIPE	0	0	-	0	0	1.352	-100%	-100%	-
PHILIPPINES	0	0	-	9	7	1.292	-100%	-100%	-
COMOROS	0	0	-	11	17	665	-100%	-100%	-
CHILE	0	0	-	41	55	742	-100%	-100%	-
NORTH KOREA	0	0	-	82	73	1.118	-100%	-100%	-
SOUTH KOREA	0	0	-	612	720	850	-100%	-100%	-
ARGENTINA	0	0	-	106	97	1.089	-100%	-100%	-
LUXEMBOURG	0	0	-	10	26	400	-100%	-100%	-
HUNGARY	0	0	-	13	25	500	-100%	-100%	-
IRELAND	0	0	-	12	23	525	-100%	-100%	-
BAHAMAS	0	0	-	41	26	1.561	-100%	-100%	-
AUSTRALIA	0	0	-	5	4	1.320	-100%	-100%	-
JAPAN	0	0	-	533	185	2.886	-100%	-100%	-
	<b>92.975</b>	<b>75.650</b>	<b>1.229</b>	<b>64.075</b>	<b>63.119</b>	<b>1.015</b>	<b>45%</b>	<b>20%</b>	<b>21%</b>



Exportações Brasileiras de Carne Bovina  
 Brazilian Beef Exports  
 Fonte / Source: SECEX-MDIC  
**SALGADAS / SALTED**

ian 2006 - dez 2006

ian 2005 - dez 2005

%(2006x2005)

Destino / Country	US\$ (000)	TONNES	US\$/Ton	US\$ (000)	TONNES	US\$/Ton	US\$ (000)	TONNES	US\$/Ton
ANGOLA	6.203	2.588	2.397	5.849	2.997	1.951	6%	-14%	23%
NETHERLANDS	1.236	79	15.622	361	44	8.214	243%	80%	90%
UNITED STATES	696	89	7.802	0	0	-	-	-	-
UNITED KINGDOM	113	5	20.765	185	13	14.052	-39%	-59%	48%
JAPAN	109	25	4.352	0	0	-	-	-	-
SURINAME	27	8	3.198	0	0	-	-	-	-
NETHERLANDS ANTILLES	8	3	2.489	0	0	-	-	-	-
ISRAEL	3	3	979	86	38	2.279	-97%	-93%	-57%
PORTUGAL	0	0	-	57	22	2.556	-100%	-100%	-
MACAO	0	0	-	0	0	1.700	-100%	-100%	-
RUSSIA	0	0	-	57	3	19.001	-100%	-100%	-
CONGO	0	0	-	53	23	2.350	-100%	-100%	-
CHILE	0	0	-	3	0	10.370	-100%	-100%	-
GERMANY	0	0	-	11	4	2.830	-100%	-100%	-
SPAIN	0	0	-	34	17	1.965	-100%	-100%	-
SOUTH AFRICA	0	0	-	1	0	13.775	-100%	-100%	-
	<b>8.394</b>	<b>2.800</b>	<b>2.997</b>	<b>6.696</b>	<b>3.162</b>	<b>2.118</b>	<b>25%</b>	<b>-11%</b>	<b>42%</b>



**Exportações Brasileiras de Carne Bovina**  
**Brazilian Beef Exports**  
 Fonte / Source: SECEX-MDIC  
**TRIPAS / CASINGS**

ian 2006 - dez 2006

ian 2005 - dez 2005

%(2006x2005)

Destino / Country	US\$ (000)	TONNES	US\$/Ton	US\$ (000)	TONNES	US\$/Ton	US\$ (000)	TONNES	US\$/Ton
RUSSIA	5.890	2.571	2.291	7.940	3.796	2.092	-26%	-32%	10%
GERMANY	4.866	2.062	2.360	12.444	5.891	2.112	-61%	-65%	12%
UKRAINE	3.033	1.394	2.175	695	377	1.847	336%	270%	18%
SPAIN	2.918	1.932	1.510	5.132	3.935	1.304	-43%	-51%	16%
NETHERLANDS	2.729	1.035	2.636	2.476	1.136	2.180	10%	-9%	21%
PARAGUAY	2.679	1.780	1.505	1.360	1.477	920	97%	20%	64%
ITALY	2.538	1.100	2.307	5.894	2.642	2.231	-57%	-58%	3%
UNITED STATES	1.906	675	2.825	1.268	459	2.761	50%	47%	2%
HONG KONG	1.515	1.133	1.336	1.386	1.431	968	9%	-21%	38%
ESTONIA	996	374	2.663	177	129	1.373	462%	189%	94%
TURKEY	795	333	2.385	11	0	547.500	7.158%	#####	-100%
POLAND	598	372	1.608	310	258	1.200	93%	44%	34%
EGYPT	556	300	1.857	0	0	-	-	-	-
PORTUGAL	438	284	1.542	1.119	700	1.599	-61%	-59%	-4%
SOUTH AFRICA	386	232	1.667	187	147	1.277	106%	58%	31%
AUSTRIA	245	107	2.300	1.139	591	1.925	-78%	-82%	19%
FRANCE	209	107	1.960	1.353	629	2.151	-85%	-83%	-9%
YUGOSLAVIA	202	209	968	0	0	-	-	-	-
CZECH REPUBLIC	160	84	1.901	185	105	1.767	-14%	-20%	8%
BULGARIA	156	80	1.950	0	0	-	-	-	-
IRELAND	141	42	3.377	144	64	2.259	-2%	-34%	49%
PERU	113	12	9.070	184	195	946	-39%	-94%	859%
MEXICO	82	10	8.605	326	0	883.420	-75%	2.489%	-99%
CROATIA	72	42	1.727	86	62	1.378	-16%	-33%	25%
SAUDI ARABIA	58	44	1.327	0	0	-	-	-	-
ISRAEL	56	16	3.387	22	8	2.667	151%	98%	27%
NORWAY	46	21	2.204	42	21	2.018	9%	0%	9%
ROMANIA	44	20	2.238	0	0	-	-	-	-
SERBIA	22	21	1.042	0	0	-	-	-	-
ARUBA	16	13	1.231	2	2	1.000	787%	621%	23%
NETHERLANDS ANTILLES	6	5	1.180	4	4	1.086	46%	35%	9%
MOZAMBIQUE	5	4	1.300	0	0	-	-	-	-
VIETNAM	0	0	-	28	76	367	-100%	-100%	-
SWITZERLAND	0	0	-	622	302	2.060	-100%	-100%	-
THAILAND	0	0	-	10	0	1.118.889	-100%	-100%	-
URUGUAY	0	0	-	371	230	1.612	-100%	-100%	-
UNITED KINGDOM	0	0	-	62	24	2.584	-100%	-100%	-
CANARY, ISLANDS	0	0	-	8	7	1.143	-100%	-100%	-
CHINA	0	0	-	24	25	970	-100%	-100%	-
ARGENTINA	0	0	-	562	632	889	-100%	-100%	-
SLOVENIA	0	0	-	24	21	1.146	-100%	-100%	-
UNITED ARAB EMIRATES	0	0	-	2	2	1.044	-100%	-100%	-
GREECE	0	0	-	26	20	1.268	-100%	-100%	-
	<b>33.476</b>	<b>16.413</b>	<b>2.040</b>	<b>45.624</b>	<b>25.398</b>	<b>1.796</b>	<b>-27%</b>	<b>-35%</b>	<b>14%</b>



**Exportações Brasileiras de Carne Bovina**  
**Brazilian Beef Exports**  
 Fonte / Source: SECEX-MDIC  
**TOTAL POR PAÍS / TOTAL PER COUNTRY**

Destino / Country	ian 2006 - dez 2006			ian 2005 - dez 2005			%(2006x2005)		
	US\$ (000)	TONNES	US\$/Ton	US\$ (000)	TONNES	US\$/Ton	US\$ (000)	TONNES	US\$/Ton
RUSSIA	762.136	328.466	2.320	572.971	306.163	1.871	33%	7%	24%
EGYPT	377.035	207.307	1.819	261.846	152.539	1.717	44%	36%	6%
UNITED KINGDOM	329.799	113.803	2.898	312.577	118.597	2.636	6%	-4%	10%
NETHERLANDS	306.561	62.007	4.944	220.595	52.163	4.229	39%	19%	17%
UNITED STATES	279.956	64.689	4.328	208.752	52.544	3.973	34%	23%	9%
ITALY	271.828	58.917	4.614	190.351	57.895	3.288	43%	2%	40%
GERMANY	119.088	23.520	5.063	108.812	29.190	3.728	9%	-19%	36%
HONG KONG	112.079	68.718	1.631	75.886	56.149	1.352	48%	22%	21%
IRAN	107.234	44.985	2.384	11.837	6.908	1.713	806%	551%	39%
ALGERIA	101.971	47.447	2.149	75.861	42.077	1.803	34%	13%	19%
BULGARIA	101.753	56.764	1.793	69.424	44.497	1.560	47%	28%	15%
SAUDI ARABIA	87.786	41.704	2.105	60.435	29.424	2.054	45%	42%	2%
ISRAEL	72.570	32.621	2.225	43.541	24.009	1.814	67%	36%	23%
ROMANIA	49.351	34.004	1.451	37.832	23.523	1.608	30%	45%	-10%
SWITZERLAND	48.705	9.879	4.930	38.627	9.609	4.020	26%	3%	23%
SWEDEN	48.373	8.465	5.715	35.852	7.501	4.780	35%	13%	20%
LEBANON	47.794	20.047	2.384	35.146	15.889	2.212	36%	26%	8%
CANARY, ISLANDS	45.347	9.861	4.598	14.012	3.694	3.793	224%	167%	21%
SPAIN	44.844	12.392	3.619	63.049	19.671	3.205	-29%	-37%	13%
PHILIPPINES	44.590	28.924	1.542	32.940	20.763	1.586	35%	39%	-3%
LIBYA	38.063	20.712	1.838	26.963	15.206	1.773	41%	36%	4%
UNITED ARAB EMIRATES	35.578	14.257	2.495	20.821	8.818	2.361	71%	62%	6%
VENEZUELA	33.818	13.553	2.495	19.343	9.157	2.112	75%	48%	18%
FRANCE	31.426	9.276	3.388	33.196	11.939	2.781	-5%	-22%	22%
SINGAPORE	25.800	11.888	2.170	24.479	12.124	2.019	5%	-2%	7%
PORTUGAL	25.353	5.359	4.730	16.282	4.684	3.476	56%	14%	36%
ANGOLA	25.000	11.298	2.213	17.307	8.714	1.986	44%	30%	11%
IRELAND	24.454	6.309	3.876	24.228	8.060	3.006	1%	-22%	29%
UKRAINE	22.721	13.603	1.670	34.402	20.877	1.648	-34%	-35%	1%
CUBA	22.615	9.887	2.287	1.984	1.436	1.382	1.040%	588%	66%
CHILE	18.972	5.413	3.505	140.769	67.126	2.097	-87%	-92%	67%
DENMARK	16.908	2.915	5.800	11.305	2.538	4.454	50%	15%	30%
FINLAND	16.022	1.911	8.383	13.312	1.779	7.481	20%	7%	12%
KAZAKHSTAN	14.768	8.912	1.657	1.890	1.097	1.723	681%	712%	-4%
KUWAIT	12.675	6.534	1.940	10.794	5.844	1.847	17%	12%	5%
BELGIUM	12.025	3.484	3.451	16.163	4.841	3.339	-26%	-28%	3%
JORDAN	11.104	5.591	1.986	9.525	5.282	1.803	17%	6%	10%
CROATIA	10.010	5.563	1.799	5.703	2.812	2.028	76%	98%	-11%
BOSNIA AND HERZEGOVINA	9.932	5.696	1.744	229	124	1.852	4.240%	4.510%	-6%
MACEDONIA	9.732	5.347	1.820	6.057	3.362	1.801	61%	59%	1%
JAPAN	9.038	2.465	3.666	14.424	3.845	3.752	-37%	-36%	-2%
IRAQ	8.281	4.342	1.907	97	51	1.887	8.436%	8.347%	1%
PUERTO RICO	8.251	3.135	2.632	4.042	1.605	2.518	104%	95%	5%
YUGOSLAVIA	7.290	3.820	1.908	2.936	1.615	1.818	148%	137%	5%
<b>TOTAL</b>	<b>3.943.417</b>	<b>1.526.941</b>	<b>2.583</b>	<b>3.074.317</b>	<b>1.358.679</b>	<b>2.263</b>	<b>28%</b>	<b>12%</b>	<b>14%</b>





**Exportações Brasileiras de Carne Bovina**  
**Brazilian Beef Exports**  
**Fonte / Source: SECEX-MDIC**  
**TOTAL POR PAÍS / TOTAL PER COUNTRY**

Destino / Country	ian 2006 - dez 2006			ian 2005 - dez 2005			%(2006x2005)		
	US\$ (000)	TONNES	US\$/Ton	US\$ (000)	TONNES	US\$/Ton	US\$ (000)	TONNES	US\$/Ton
COTE D'IVOIRE	6.913	7.865	879	3.768	5.109	737	83%	54%	19%
ALBANIA	6.048	3.185	1.899	4.832	2.513	1.923	25%	27%	-1%
JAMAICA	6.023	2.536	2.375	11.336	4.942	2.294	-47%	-49%	4%
MOLDOVA	5.816	3.172	1.834	3.148	1.843	1.708	85%	72%	7%
GREECE	5.749	2.867	2.005	8.786	4.070	2.159	-35%	-30%	-7%
URUGUAY	5.640	2.702	2.087	8.029	4.429	1.813	-30%	-39%	15%
MALAYSIA	5.547	2.759	2.011	6.819	3.720	1.833	-19%	-26%	10%
PERU	5.241	4.538	1.155	3.708	5.357	692	41%	-15%	67%
NORWAY	4.635	964	4.808	8.115	1.392	5.831	-43%	-31%	-18%
QATAR	4.406	1.635	2.694	2.208	943	2.341	100%	73%	15%
CANADA	4.320	1.672	2.583	9.911	4.168	2.378	-56%	-60%	9%
NETHERLANDS ANTILLES	3.892	1.852	2.101	1.431	758	1.889	172%	144%	11%
GABON	3.549	2.846	1.247	1.982	1.446	1.371	79%	97%	-9%
TURKEY	3.289	1.304	2.523	352	127	2.775	834%	927%	-9%
ARUBA	3.288	1.401	2.346	1.121	526	2.131	193%	166%	10%
LITHUANIA	3.256	1.581	2.060	2.068	1.473	1.404	57%	7%	47%
PARAGUAY	3.084	1.999	1.543	1.695	1.687	1.004	82%	18%	54%
GHANA	3.058	2.431	1.258	1.425	889	1.604	115%	174%	-22%
MALTA	2.999	896	3.346	4.309	1.432	3.010	-30%	-37%	11%
BAHREIN	2.700	973	2.776	1.794	815	2.202	51%	19%	26%
TUNISIA	2.602	1.055	2.466	0	0	-	-	-	-
TRINIDAD AND TOBAGO	2.116	982	2.155	3.886	2.098	1.852	-46%	-53%	16%
CONGO	1.623	915	1.774	640	331	1.935	153%	177%	-8%
LIBERIA	1.510	1.094	1.380	244	127	1.927	519%	764%	-28%
TANZANIA	1.436	592	2.426	75	34	2.199	1.805%	1.627%	10%
SENEGAL	1.334	727	1.835	625	376	1.660	114%	93%	11%
ESTONIA	1.331	552	2.410	247	154	1.604	438%	258%	50%
EQUATORIAL GUINEA	1.270	601	2.114	1.261	336	3.749	1%	79%	-44%
GEORGIA	1.255	861	1.457	170	125	1.360	636%	587%	7%
MAURITIUS	1.250	438	2.857	1.842	772	2.385	-32%	-43%	20%
OMAN	1.245	552	2.255	995	511	1.946	25%	8%	16%
SOUTH AFRICA	1.201	744	1.615	16.859	11.362	1.484	-93%	-93%	9%
MOZAMBIQUE	1.183	684	1.730	1.277	720	1.774	-7%	-5%	-2%
SERBIA	1.093	544	2.010	0	0	-	-	-	-
SYRIA	1.081	430	2.517	0	0	-	-	-	-
CAPE VERDE	1.067	349	3.057	684	260	2.630	56%	34%	16%
SOUTH KOREA	1.039	186	5.590	5.313	3.382	1.571	-80%	-95%	256%
POLAND	1.029	603	1.706	3.896	2.337	1.667	-74%	-74%	2%
COMOROS	910	695	1.311	1.451	1.003	1.447	-37%	-31%	-9%
BAHAMAS	864	417	2.072	1.259	719	1.751	-31%	-42%	18%
MEXICO	846	335	2.527	657	150	4.378	29%	123%	-42%
NEW ZEALAND	829	250	3.318	629	167	3.755	32%	49%	-12%
LATVIA	813	476	1.706	531	304	1.746	53%	56%	-2%
SRI LANKA	773	247	3.133	208	74	2.807	271%	232%	12%
<b>TOTAL</b>	<b>3.943.417</b>	<b>1.526.941</b>	<b>2.583</b>	<b>3.074.317</b>	<b>1.358.679</b>	<b>2.263</b>	<b>28%</b>	<b>12%</b>	<b>14%</b>



**Exportações Brasileiras de Carne Bovina**  
**Brazilian Beef Exports**  
**Fonte / Source: SECEX-MDIC**  
**TOTAL POR PAÍS / TOTAL PER COUNTRY**

Destino / Country	ian 2006 - dez 2006			ian 2005 - dez 2005			% (2006x2005)		
	US\$ (000)	TONNES	US\$/Ton	US\$ (000)	TONNES	US\$/Ton	US\$ (000)	TONNES	US\$/Ton
CHINA	742	650	1.141	2.499	1.886	1.325	-70%	-66%	-14%
NAMIBIA	736	613	1.200	107	99	1.077	588%	517%	11%
CYPRUS	721	337	2.140	2.023	609	3.321	-64%	-45%	-36%
HAITI	713	293	2.433	389	170	2.284	83%	72%	7%
BARBADOS	697	311	2.244	773	392	1.972	-10%	-21%	14%
BRUNEI	639	640	998	301	265	1.134	113%	141%	-12%
BERMUDA	577	271	2.127	511	275	1.857	13%	-1%	15%
KENYA	565	262	2.156	629	325	1.940	-10%	-19%	11%
AUSTRALIA	550	192	2.871	676	331	2.043	-19%	-42%	41%
GUINEA	525	122	4.302	194	37	5.300	170%	233%	-19%
SAINT VICENT AND THE GRANADINES	455	187	2.431	352	174	2.025	29%	8%	20%
SURINAME	433	218	1.988	152	84	1.814	185%	160%	10%
MALDIVES	415	136	3.050	213	87	2.444	95%	56%	25%
GRENADA	411	208	1.976	465	236	1.972	-11%	-12%	0%
SAINT LUCIA	403	159	2.537	238	116	2.056	69%	37%	23%
BELIZE	394	169	2.334	322	156	2.066	23%	9%	13%
AUSTRIA	384	154	2.501	1.139	591	1.925	-66%	-74%	30%
AFGHANISTAN	375	76	4.965	78	25	3.113	383%	203%	59%
MONACO	372	133	2.797	375	130	2.894	-1%	3%	-3%
GAMBIA	344	127	2.710	255	150	1.700	35%	-15%	59%
GUYANA	322	166	1.945	144	90	1.590	124%	83%	22%
DEMOCRATIC REPUBLIC OF THE C...	314	347	907	231	108	2.140	36%	221%	-58%
ANTIGUA AND BARBUDA	296	126	2.341	331	157	2.111	-11%	-19%	11%
HUNGARY	258	75	3.433	221	100	2.204	16%	-25%	56%
DOMINICA ISLAND	252	106	2.375	172	86	1.989	47%	23%	19%
SAMOA	249	87	2.843	54	18	3.002	361%	387%	-5%
CZECH REPUBLIC	236	95	2.486	202	130	1.554	17%	-27%	60%
SEYCHELLES	220	99	2.232	137	58	2.375	60%	70%	-6%
COLOMBIA	190	36	5.277	34	5	6.705	451%	600%	-21%
FAROE ISLANDS	190	47	4.023	75	23	3.351	151%	109%	20%
PANAMA	183	83	2.199	122	64	1.914	50%	31%	15%
CAYMAN ISLANDS	172	75	2.308	253	124	2.046	-32%	-40%	13%
PAKISTAN	170	60	2.851	57	12	4.750	197%	395%	-40%
BENIN	166	88	1.891	76	39	1.961	118%	126%	-4%
SLOVENIA	160	100	1.602	59	46	1.285	172%	118%	25%
AZERBAIJAN	160	100	1.588	0	0	733	207.097%	95.585%	117%
VIRGIN ISLANDS (UK)	137	64	2.131	460	256	1.796	-70%	-75%	19%
KYRGYZSTAN	117	76	1.533	0	0	-	-	-	-
BOLIVIA	112	76	1.464	262	174	1.509	-58%	-56%	-3%
ARMENIA	105	51	2.053	45	25	1.785	135%	104%	15%
PAPUA NEW GUINEA	104	51	2.028	0	0	-	-	-	-
FRENCH POLYNESIA	101	34	3.002	79	34	2.304	28%	-2%	30%
CAMEROON	98	24	4.045	42	26	1.623	134%	-6%	149%
YEMEN	90	33	2.714	0	0	-	-	-	-
	<b>3.943.417</b>	<b>1.526.941</b>	<b>2.583</b>	<b>3.074.317</b>	<b>1.358.679</b>	<b>2.263</b>	<b>28%</b>	<b>12%</b>	<b>14%</b>



**Exportações Brasileiras de Carne Bovina**  
**Brazilian Beef Exports**  
**Fonte / Source: SECEX-MDIC**  
**TOTAL POR PAÍS / TOTAL PER COUNTRY**

Destino / Country	ian 2006 - dez 2006			ian 2005 - dez 2005			% (2006x2005)		
	US\$ (000)	TONNES	US\$/Ton	US\$ (000)	TONNES	US\$/Ton	US\$ (000)	TONNES	US\$/Ton
THAILAND	89	23	3.902	81	17	4.720	11%	34%	-17%
KIRIBATI	89	38	2.326	159	76	2.101	-44%	-50%	11%
MICRONESIA	83	34	2.426	91	51	1.766	-9%	-34%	37%
SÃO TOME AND PRINCIPE	72	24	2.934	26	8	3.177	175%	197%	-8%
FRENCH GUYANA	58	26	2.263	25	14	1.800	128%	81%	26%
GIBRALTAR	55	13	4.163	264	64	4.135	-79%	-79%	1%
NIGERIA	54	10	5.344	0	0	-	-	-	-
ARGENTINA	50	25	1.999	723	752	962	-93%	-97%	108%
GUATEMALA	46	25	1.856	0	0	-	-	-	-
UZBEKISTAN	46	25	1.830	923	501	1.844	-95%	-95%	-1%
GADELOUPE	36	16	2.296	0	0	-	-	-	-
SIERRA LEONE	33	13	2.558	35	20	1.743	-5%	-35%	47%
SLOVAKIA	30	8	3.751	0	0	-	-	-	-
TAIWAN	22	3	6.472	314	195	1.614	-93%	-98%	301%
ECUADOR	12	2	5.720	20	4	5.051	-43%	-49%	13%
ANGUILLA	4	2	2.402	0	0	-	-	-	-
ZIMBABWE	0	0	-	50	32	1.547	-100%	-100%	-
ZAMBIA	0	0	-	25	16	1.547	-100%	-100%	-
TURKS AND CAICOS, ISLANDS	0	0	-	9	5	1.925	-100%	-100%	-
TAJIKISTAN	0	0	-	148	99	1.488	-100%	-100%	-
VIETNAM	0	0	-	43	101	423	-100%	-100%	-
DJIBOUTI	0	0	-	29	8	3.802	-100%	-100%	-
NORTH KOREA	0	0	-	203	167	1.220	-100%	-100%	-
INDONESIA	0	0	-	75	34	2.201	-100%	-100%	-
GUAM	0	0	-	39	18	2.181	-100%	-100%	-
LUXEMBOURG	0	0	-	10	26	400	-100%	-100%	-
MACAO	0	0	-	15	3	5.803	-100%	-100%	-
MADAGASCAR	0	0	-	75	34	2.222	-100%	-100%	-
	<b>3.943.417</b>	<b>1.526.941</b>	<b>2.583</b>	<b>3.074.317</b>	<b>1.358.679</b>	<b>2.263</b>	<b>28%</b>	<b>12%</b>	<b>14%</b>