

**Exportações Brasileiras de Carne Bovina
Brazilian Beef Exports**

Fonte / Source: SECEX-MDIC

ABIEC



**Categorias / Products:
IN NATURA / FRESH BEEF, INDUSTRIALIZADAS / PROCESSED, MIÚDOS /
OFFALS, SALGADAS / SALTED, TRIPAS / CASINGS**

Periodo: jan/2005 - dez/2005



**Exportações Brasileiras de Carne Bovina
Brazilian Beef Exports**

Fonte / Source: SECEX-MDIC

2005 **2004** **%(2005x2004)**

Julho / July	US\$ (000)	TONNES	US\$/Ton	US\$ (000)	TONNES	US\$/Ton	US\$ (000)	TONNES	US\$/Ton
IN NATURA / FRESH BEEF	278.041	128.336	2.167	176.775	80.190	2.204	57%	60%	-2%
INDUSTRIALIZADAS / PROCES...	41.068	13.727	2.992	44.445	16.184	2.746	-8%	-15%	9%
MIÚDOS / OFFALS	5.376	5.479	981	5.739	5.235	1.096	-6%	5%	-11%
TRIPAS / CASINGS	3.291	1.766	1.864	2.685	1.266	2.121	23%	39%	-12%
SALGADAS / SALTED	441	220	2.000	1.258	725	1.735	-65%	-70%	15%
	328.217	149.528	2.195	230.902	103.599	2.229	42%	44%	-2%

2005 **2004** **%(2005x2004)**

Agosto / August	US\$ (000)	TONNES	US\$/Ton	US\$ (000)	TONNES	US\$/Ton	US\$ (000)	TONNES	US\$/Ton
IN NATURA / FRESH BEEF	282.017	125.515	2.247	198.355	95.298	2.081	42%	32%	8%
INDUSTRIALIZADAS / PROCES...	49.419	15.806	3.127	41.343	15.364	2.691	20%	3%	16%
MIÚDOS / OFFALS	6.508	6.404	1.016	6.887	5.776	1.192	-6%	11%	-15%
TRIPAS / CASINGS	3.822	2.279	1.677	3.902	2.054	1.900	-2%	11%	-12%
SALGADAS / SALTED	767	352	2.177	711	337	2.112	8%	5%	3%
	342.534	150.356	2.278	251.198	118.829	2.114	36%	27%	8%

2005 **2004** **%(2005x2004)**

Setembro / September	US\$ (000)	TONNES	US\$/Ton	US\$ (000)	TONNES	US\$/Ton	US\$ (000)	TONNES	US\$/Ton
IN NATURA / FRESH BEEF	209.757	93.847	2.235	192.947	92.814	2.079	9%	1%	8%
INDUSTRIALIZADAS / PROCES...	53.367	16.926	3.153	45.999	16.912	2.720	16%	0%	16%
MIÚDOS / OFFALS	5.349	5.566	961	6.594	6.164	1.070	-19%	-10%	-10%
TRIPAS / CASINGS	3.883	2.398	1.619	2.677	1.307	2.048	45%	83%	-21%
SALGADAS / SALTED	642	312	2.055	1.013	435	2.331	-37%	-28%	-12%
	272.999	119.050	2.293	249.230	117.633	2.119	10%	1%	8%

2005 **2004** **%(2005x2004)**

Outubro / October	US\$ (000)	TONNES	US\$/Ton	US\$ (000)	TONNES	US\$/Ton	US\$ (000)	TONNES	US\$/Ton
IN NATURA / FRESH BEEF	153.946	71.941	2.140	180.237	87.910	2.050	-15%	-18%	4%
INDUSTRIALIZADAS / PROCES...	51.501	15.474	3.328	39.729	14.950	2.658	30%	4%	25%
MIÚDOS / OFFALS	6.140	5.246	1.170	6.831	6.446	1.060	-10%	-19%	10%
TRIPAS / CASINGS	5.485	3.463	1.584	3.226	1.639	1.969	70%	111%	-20%
SALGADAS / SALTED	360	137	2.631	680	324	2.100	-47%	-58%	25%
	217.432	96.261	2.259	230.703	111.267	2.073	-6%	-13%	9%

2005 **2004** **%(2005x2004)**

Novembro / November	US\$ (000)	TONNES	US\$/Ton	US\$ (000)	TONNES	US\$/Ton	US\$ (000)	TONNES	US\$/Ton
IN NATURA / FRESH BEEF	170.791	70.907	2.409	184.842	91.442	2.021	-8%	-22%	19%
INDUSTRIALIZADAS / PROCES...	49.749	14.223	3.498	40.172	14.613	2.749	24%	-3%	27%
MIÚDOS / OFFALS	4.523	4.077	1.109	6.449	6.256	1.031	-30%	-35%	8%
TRIPAS / CASINGS	5.015	3.190	1.572	3.135	1.667	1.881	60%	91%	-16%
SALGADAS / SALTED	300	82	3.661	372	173	2.148	-19%	-53%	70%
	230.378	92.479	2.491	234.970	114.151	2.058	-2%	-19%	21%

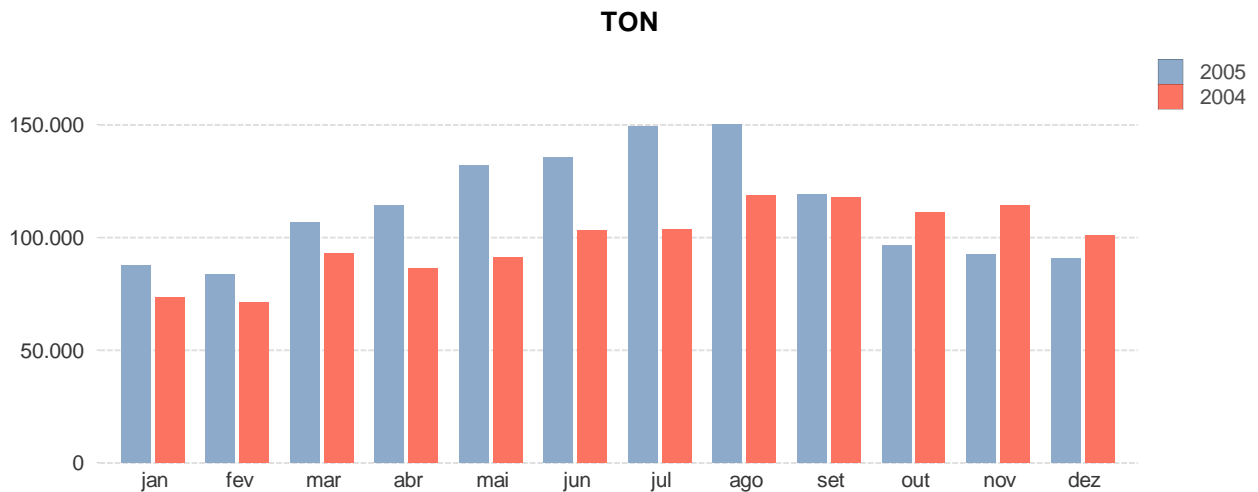
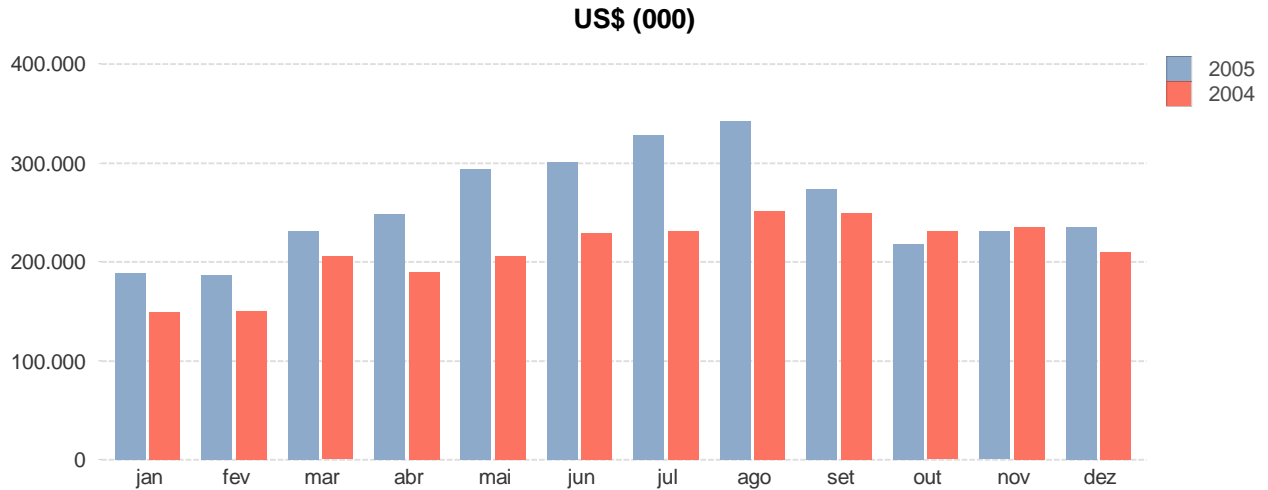
2005 **2004** **%(2005x2004)**

Dezembro / December	US\$ (000)	TONNES	US\$/Ton	US\$ (000)	TONNES	US\$/Ton	US\$ (000)	TONNES	US\$/Ton
IN NATURA / FRESH BEEF	161.977	66.009	2.454	155.918	75.930	2.053	4%	-13%	20%
INDUSTRIALIZADAS / PROCES...	61.163	17.213	3.553	44.074	16.933	2.603	39%	2%	37%
MIÚDOS / OFFALS	5.171	4.345	1.190	6.397	6.492	985	-19%	-33%	21%
TRIPAS / CASINGS	6.476	3.254	1.990	2.909	1.337	2.176	123%	143%	-9%
SALGADAS / SALTED	153	29	5.213	254	135	1.890	-40%	-78%	176%
	234.938	90.851	2.586	209.553	100.827	2.078	12%	-10%	24%



Exportações Brasileiras de Carne Bovina
 Brazilian Beef Exports
 Fonte / Source: SECEX-MDIC

EVOLUÇÃO DAS EXPORTAÇÕES DE CARNE BOVINA DO BRASIL
 BRAZILIAN BEEF EXPORTS



jan 2005 - dez 2005

Mes / Month	jan	fev	mar	abr	mai	jun	jul	ago	set	out	nov	dez
US\$ (000)	188.509	186.315	231.097	248.093	293.680	300.126	328.217	342.534	272.999	217.432	230.378	234.938
TONNES	87.776	83.656	106.676	114.312	132.166	135.566	149.528	150.356	119.050	96.261	92.479	90.851
US\$/Ton	2.148	2.227	2.166	2.170	2.222	2.214	2.195	2.278	2.293	2.259	2.491	2.586

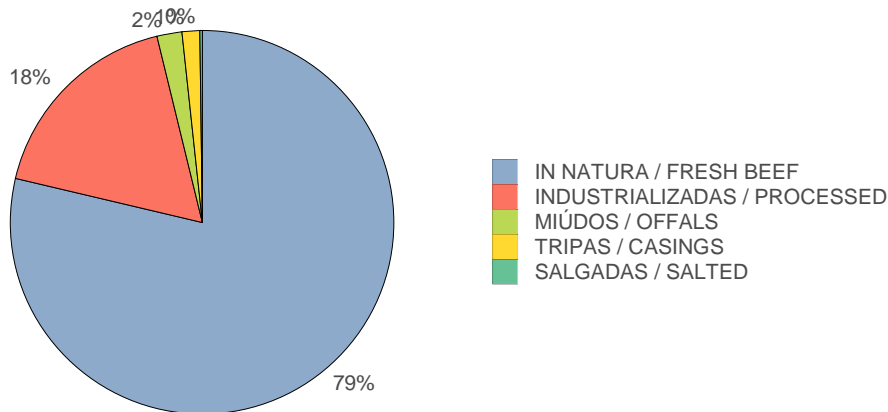


**Exportações Brasileiras de Carne Bovina
Brazilian Beef Exports
Fonte / Source: SECEX-MDIC**

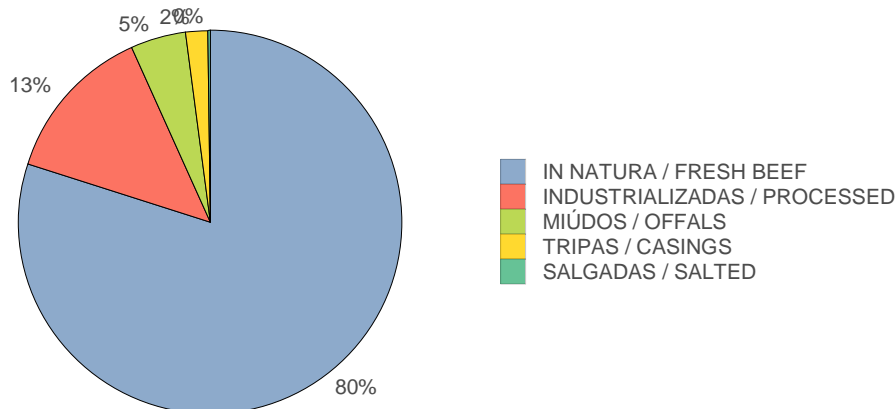
Produto / Product	jan 2005 - dez 2005			jan 2004 - dez 2004			% (2005x2004)		
	US\$ (000)	TONNES	US\$/Ton	US\$ (000)	TONNES	US\$/Ton	US\$ (000)	TONNES	US\$/Ton
IN NATURA / FRESH BEEF	2.419.111	1.085.591	2.228	1.963.106	925.082	2.122	23%	17%	5%
INDUSTRIALIZADAS / PROCESSED	538.810	181.409	2.970	456.781	173.423	2.634	18%	5%	13%
MIÚDOS / OFFALS	64.075	63.119	1.015	69.015	63.409	1.088	-7%	-0%	-7%
TRIPAS / CASINGS	45.624	25.398	1.796	37.983	17.841	2.129	20%	42%	-16%
SALGADAS / SALTED	6.696	3.162	2.118	8.735	4.542	1.923	-23%	-30%	10%
	3.074.317	1.358.679	2.263	2.535.619	1.184.295	2.141	21%	15%	6%

**EXPORTAÇÕES DE CARNE BOVINA DO BRASIL POR PRODUTOS
BRAZILIAN BEEF EXPORTS PER PRODUCTS**

US\$



TON





Exportações Brasileiras de Carne Bovina
Brazilian Beef Exports
Fonte / Source: SECEX-MDIC
IN NATURA / FRESH BEEF

Destino / Country	ian 2005 - dez 2005			ian 2004 - dez 2004			%(2005x2004)		
	US\$ (000)	TONNES	US\$/Ton	US\$ (000)	TONNES	US\$/Ton	US\$ (000)	TONNES	US\$/Ton
RUSSIA	555.273	294.653	1.884	239.107	154.389	1.549	132%	91%	22%
EGYPT	252.714	146.444	1.726	161.853	112.304	1.441	56%	30%	20%
NETHERLANDS	191.486	41.723	4.589	213.871	47.644	4.489	-10%	-12%	2%
UNITED KINGDOM	181.661	65.936	2.755	122.999	39.859	3.086	48%	65%	-11%
ITALY	152.685	46.893	3.256	135.005	41.865	3.225	13%	12%	1%
CHILE	139.982	66.597	2.102	198.938	104.273	1.908	-30%	-36%	10%
GERMANY	79.706	17.631	4.521	84.402	19.205	4.395	-6%	-8%	3%
ALGERIA	75.693	41.986	1.803	61.434	38.640	1.590	23%	9%	13%
BULGARIA	69.424	44.497	1.560	27.336	20.625	1.325	154%	116%	18%
SAUDI ARABIA	57.686	27.833	2.073	72.867	41.752	1.745	-21%	-33%	19%
SPAIN	56.608	15.285	3.703	76.478	19.342	3.954	-26%	-21%	-6%
HONG KONG	43.738	22.205	1.970	43.887	23.185	1.893	-0%	-4%	4%
ISRAEL	37.863	20.646	1.834	42.399	23.149	1.832	-11%	-11%	0%
ROMANIA	37.832	23.523	1.608	12	11	1.050	325.225%	212.301%	53%
SWITZERLAND	36.693	8.800	4.170	29.504	8.142	3.624	24%	8%	15%
UKRAINE	33.188	20.090	1.652	1.615	1.216	1.328	1.955%	1.552%	24%
SWEDEN	32.328	5.828	5.547	32.173	5.572	5.774	0%	5%	-4%
PHILIPPINES	31.076	19.820	1.568	42.023	34.625	1.214	-26%	-43%	29%
LEBANON	30.741	13.186	2.331	25.477	11.871	2.146	21%	11%	9%
LIBYA	26.963	15.206	1.773	17.727	11.583	1.530	52%	31%	16%
SINGAPORE	23.612	11.632	2.030	19.932	11.510	1.732	18%	1%	17%
FRANCE	19.744	7.104	2.779	11.260	3.895	2.891	75%	82%	-4%
IRELAND	19.483	6.840	2.848	21.610	9.123	2.369	-10%	-25%	20%
VENEZUELA	19.277	9.142	2.109	21.690	10.701	2.027	-11%	-15%	4%
UNITED ARAB EMIRATES	18.013	7.141	2.523	15.133	6.843	2.212	19%	4%	14%
SOUTH AFRICA	16.399	10.913	1.503	13.646	10.041	1.359	20%	9%	11%
PORTUGAL	14.842	3.758	3.949	17.901	4.591	3.899	-17%	-18%	1%
FINLAND	13.255	1.766	7.506	10.289	1.456	7.068	29%	21%	6%
CANARY, ISLANDS	13.220	3.367	3.927	1.143	579	1.974	1.057%	482%	99%
IRAN	11.837	6.908	1.713	102.073	63.594	1.605	-88%	-89%	7%
DENMARK	11.177	2.484	4.499	11.242	2.275	4.943	-1%	9%	-9%
ANGOLA	9.957	4.762	2.091	8.899	4.969	1.791	12%	-4%	17%
KUWAIT	8.307	4.377	1.898	6.192	3.456	1.792	34%	27%	6%
GREECE	8.281	3.772	2.195	8.162	3.551	2.298	1%	6%	-4%
NORWAY	7.607	1.258	6.049	10.462	1.585	6.601	-27%	-21%	-8%
URUGUAY	7.551	4.122	1.832	1.066	525	2.033	608%	686%	-10%
MALAYSIA	6.758	3.671	1.841	3.176	1.952	1.627	113%	88%	13%
MACEDONIA	6.044	3.337	1.811	4.203	2.796	1.503	44%	19%	20%
CROATIA	5.617	2.749	2.043	1.203	797	1.509	367%	245%	35%
ALBANIA	4.626	2.136	2.166	1.523	1.027	1.483	204%	108%	46%
BELGIUM	3.849	656	5.868	5.177	925	5.598	-26%	-29%	5%
SOUTH KOREA	3.752	2.436	1.540	2.906	2.128	1.366	29%	14%	13%
JORDAN	3.419	2.003	1.707	1.817	897	2.026	88%	123%	-16%
POLAND	3.405	1.927	1.767	1.225	816	1.501	178%	136%	18%
TOTAL	2.419.111	1.085.591	2.228	1.963.106	925.082	2.122	23%	17%	5%



Exportações Brasileiras de Carne Bovina
Brazilian Beef Exports
Fonte / Source: SECEX-MDIC
IN NATURA / FRESH BEEF

ian 2005 - dez 2005

ian 2004 - dez 2004

%(2005x2004)

Destino / Country	US\$ (000)	TONNES	US\$/Ton	US\$ (000)	TONNES	US\$/Ton	US\$ (000)	TONNES	US\$/Ton
MOLDOVA	3.006	1.741	1.727	1.067	701	1.521	182%	148%	14%
YUGOSLAVIA	2.846	1.474	1.931	1.459	915	1.594	95%	61%	21%
COTE D'IVOIRE	2.240	1.817	1.233	971	903	1.075	131%	101%	15%
GABON	1.926	1.368	1.408	307	237	1.297	527%	478%	9%
MALTA	1.752	331	5.297	5.636	1.482	3.802	-69%	-78%	39%
QATAR	1.745	705	2.475	1.529	737	2.075	14%	-4%	19%
CYPRUS	1.585	415	3.824	2.150	300	7.174	-26%	38%	-47%
BAHREIN	1.530	648	2.361	1.786	919	1.944	-14%	-29%	21%
COMOROS	1.440	986	1.461	734	608	1.207	96%	62%	21%
EQUATORIAL GUINEA	1.260	335	3.756	947	201	4.702	33%	66%	-20%
KAZAKHSTAN	1.044	572	1.823	473	351	1.345	121%	63%	36%
LITHUANIA	1.033	723	1.427	507	345	1.470	104%	110%	-3%
GHANA	1.016	665	1.527	622	492	1.265	63%	35%	21%
MOZAMBIQUE	933	538	1.734	607	402	1.511	54%	34%	15%
NETHERLANDS ANTILLES	929	482	1.925	1.237	715	1.730	-25%	-33%	11%
MAURITIUS	915	374	2.442	1.064	504	2.112	-14%	-26%	16%
UZBEKISTAN	888	476	1.867	65	50	1.300	1.264%	850%	44%
ARUBA	869	396	2.195	808	457	1.769	8%	-13%	24%
PERU	722	581	1.243	580	601	966	24%	-3%	29%
SENEGAL	562	332	1.691	346	248	1.397	62%	34%	21%
CAPE VERDE	547	170	3.220	554	174	3.181	-1%	-2%	1%
VIRGIN ISLANDS (UK)	424	239	1.776	146	102	1.425	190%	133%	25%
HAITI	389	170	2.284	43	18	2.340	813%	836%	-2%
BERMUDA	388	201	1.932	174	94	1.852	124%	114%	4%
TURKEY	340	126	2.695	537	326	1.647	-37%	-61%	64%
LATVIA	316	175	1.804	213	249	855	48%	-30%	111%
TAIWAN	314	195	1.614	3	1	2.999	11.085%	20.685%	-46%
UNITED STATES	293	150	1.956	367	195	1.878	-20%	-23%	4%
MONACO	293	95	3.074	190	46	4.121	54%	107%	-25%
OMAN	264	78	3.391	352	144	2.452	-25%	-46%	38%
BRUNEI	236	234	1.007	104	37	2.800	127%	531%	-64%
GIBRALTAR	236	49	4.804	399	55	7.251	-41%	-11%	-34%
BOSNIA AND HERZEGOVINA	229	124	1.852	0	0	-	-	-	-
DEMOCRATIC REPUBLIC OF THE C...	214	98	2.187	0	0	-	-	-	-
MALDIVES	213	87	2.444	268	109	2.445	-20%	-20%	-0%
HUNGARY	209	75	2.768	185	26	7.087	13%	189%	-61%
SRI LANKA	208	74	2.807	302	113	2.687	-31%	-34%	4%
GUINEA	194	37	5.300	0	0	-	-	-	-
LIBERIA	179	90	1.997	138	126	1.098	29%	-29%	82%
BAHAMAS	154	99	1.559	126	93	1.355	23%	7%	15%
CHINA	152	107	1.429	468	344	1.361	-67%	-69%	5%
TAJIKISTAN	148	99	1.488	0	0	-	-	-	-
GAMBIA	144	71	2.033	86	50	1.725	67%	42%	18%
AUSTRALIA	124	71	1.749	229	140	1.630	-46%	-49%	7%
	2.419.111	1.085.591	2.228	1.963.106	925.082	2.122	23%	17%	5%



Exportações Brasileiras de Carne Bovina
Brazilian Beef Exports
Fonte / Source: SECEX-MDIC
IN NATURA / FRESH BEEF

ian 2005 - dez 2005

ian 2004 - dez 2004

%(2005x2004)

Destino / Country	US\$ (000)	TONNES	US\$/Ton	US\$ (000)	TONNES	US\$/Ton	US\$ (000)	TONNES	US\$/Ton
CONGO	124	56	2.226	64	25	2.500	94%	118%	-11%
NORTH KOREA	122	94	1.300	1.526	1.028	1.484	-92%	-91%	-12%
GEORGIA	113	75	1.500	55	26	2.123	104%	189%	-29%
GRENADA	95	57	1.686	65	37	1.750	48%	53%	-4%
SEYCHELLES	91	37	2.461	0	0	-	-	-	-
NAMIBIA	85	84	1.012	0	0	-	-	-	-
AFGHANISTAN	78	25	3.113	0	0	-	-	-	-
FAROE ISLANDS	75	23	3.351	515	153	3.367	-85%	-85%	-0%
ESTONIA	70	25	2.800	391	126	3.110	-82%	-80%	-10%
PAKISTAN	57	12	4.750	0	0	-	-	-	-
ARGENTINA	55	22	2.527	0	0	-	-	-	-
CAYMAN ISLANDS	49	25	1.929	0	0	-	-	-	-
KENYA	48	23	2.094	0	0	-	-	-	-
ARMENIA	45	25	1.785	51	24	2.100	-12%	4%	-15%
SAINT VICENT AND THE GRANADINES	36	23	1.550	0	0	-	-	-	-
SLOVENIA	35	25	1.400	99	12	8.217	-65%	108%	-83%
DJIBOUTI	28	7	3.968	30	13	2.353	-6%	-44%	69%
SÃO TOME AND PRINCIPE	26	8	3.202	3	1	2.527	760%	578%	27%
FRENCH GUYANA	25	14	1.800	0	0	-	-	-	-
CAMEROON	20	15	1.400	30	14	2.189	-32%	7%	-36%
MACAO	15	2	6.148	0	0	-	-	-	-
NEW ZEALAND	0	0	-	51	50	1.025	-100%	-100%	-
CZECH REPUBLIC	0	0	-	211	21	9.830	-100%	-100%	-
SYRIA	0	0	-	30	23	1.300	-100%	-100%	-
SIERRA LEONE	0	0	-	47	23	2.057	-100%	-100%	-
CANADA	0	0	-	201	112	1.789	-100%	-100%	-
GUATEMALA	0	0	-	24	11	2.189	-100%	-100%	-
MARTINIQUE	0	0	-	40	13	3.109	-100%	-100%	-
ISLE OF MAN	0	0	-	33	25	1.330	-100%	-100%	-
NIGERIA	0	0	-	35	25	1.400	-100%	-100%	-
INDONESIA	0	0	-	474	290	1.634	-100%	-100%	-
INDIA	0	0	-	116	60	1.913	-100%	-100%	-
YEMEN	0	0	-	28	25	1.135	-100%	-100%	-
LUXEMBOURG	0	0	-	5	1	5.170	-100%	-100%	-
JAPAN	0	0	-	168	50	3.376	-100%	-100%	-
	2.419.111	1.085.591	2.228	1.963.106	925.082	2.122	23%	17%	5%



Exportações Brasileiras de Carne Bovina
 Brazilian Beef Exports
 Fonte / Source: SECEX-MDIC
INDUSTRIALIZADAS / PROCESSED

ian 2005 - dez 2005

ian 2004 - dez 2004

%(2005x2004)

Destino / Country	US\$ (000)	TONNES	US\$/Ton	US\$ (000)	TONNES	US\$/Ton	US\$ (000)	TONNES	US\$/Ton
UNITED STATES	207.081	51.854	3.994	198.254	55.612	3.565	4%	-7%	12%
UNITED KINGDOM	130.634	52.547	2.486	127.022	59.625	2.130	3%	-12%	17%
ITALY	31.649	8.265	3.829	22.035	6.265	3.517	44%	32%	9%
NETHERLANDS	25.803	9.042	2.854	16.506	6.890	2.396	56%	31%	19%
GERMANY	16.540	5.486	3.015	12.336	4.890	2.523	34%	12%	20%
JAPAN	13.891	3.660	3.795	9.228	2.878	3.206	51%	27%	18%
BELGIUM	12.314	4.185	2.943	4.667	1.815	2.570	164%	131%	14%
JAMAICA	11.336	4.942	2.294	9.206	4.871	1.890	23%	1%	21%
CANADA	9.911	4.168	2.378	4.169	2.053	2.031	138%	103%	17%
FRANCE	8.817	3.228	2.731	5.779	2.172	2.661	53%	49%	3%
JORDAN	6.024	3.180	1.894	2.538	1.478	1.717	137%	115%	10%
EGYPT	5.393	2.622	2.057	3.643	1.981	1.838	48%	32%	12%
IRELAND	4.589	1.133	4.050	1.699	579	2.933	170%	96%	38%
LEBANON	4.302	2.504	1.718	2.292	1.393	1.645	88%	80%	4%
PUERTO RICO	4.025	1.589	2.532	3.120	1.498	2.083	29%	6%	22%
TRINIDAD AND TOBAGO	3.886	2.098	1.852	2.365	1.480	1.598	64%	42%	16%
ISRAEL	3.706	1.783	2.078	390	228	1.715	850%	684%	21%
SWEDEN	3.523	1.673	2.107	2.618	1.600	1.636	35%	5%	29%
MALTA	2.557	1.101	2.322	1.551	773	2.006	65%	42%	16%
UNITED ARAB EMIRATES	2.416	1.363	1.773	1.849	1.068	1.732	31%	28%	2%
KUWAIT	2.353	1.344	1.751	1.140	626	1.820	106%	115%	-4%
SAUDI ARABIA	2.170	1.069	2.030	1.463	823	1.778	48%	30%	14%
CUBA	1.984	1.436	1.382	1.230	1.102	1.116	61%	30%	24%
PHILIPPINES	1.856	937	1.981	2.205	1.208	1.825	-16%	-22%	9%
ANGOLA	1.229	704	1.745	793	754	1.052	55%	-7%	66%
SPAIN	1.217	385	3.159	1.190	597	1.992	2%	-35%	59%
BAHAMAS	1.064	594	1.792	1.427	882	1.619	-25%	-33%	11%
SOUTH KOREA	948	226	4.202	580	116	4.985	64%	94%	-16%
MAURITIUS	927	398	2.331	858	402	2.132	8%	-1%	9%
SWITZERLAND	927	253	3.661	555	160	3.470	67%	58%	6%
CANARY, ISLANDS	784	321	2.447	551	293	1.882	42%	10%	30%
BARBADOS	773	392	1.972	681	406	1.678	13%	-3%	17%
SINGAPORE	763	380	2.011	597	326	1.831	28%	16%	10%
CHILE	744	474	1.569	1.139	770	1.479	-35%	-38%	6%
OMAN	718	423	1.697	328	204	1.605	119%	107%	6%
NEW ZEALAND	629	167	3.755	724	230	3.147	-13%	-27%	19%
KENYA	581	302	1.928	152	88	1.718	283%	242%	12%
AUSTRALIA	547	256	2.136	652	267	2.439	-16%	-4%	-12%
NORWAY	466	113	4.119	137	69	1.974	240%	63%	109%
GREECE	451	226	1.992	650	328	1.980	-31%	-31%	1%
CONGO	439	218	2.011	261	128	2.040	69%	71%	-1%
CYPRUS	437	194	2.248	119	69	1.729	269%	184%	30%
QATAR	412	202	2.040	299	147	2.038	38%	38%	0%
HONG KONG	405	265	1.526	356	163	2.186	14%	63%	-30%
	538.810	181.409	2.970	456.781	173.423	2.634	18%	5%	13%



Exportações Brasileiras de Carne Bovina
Brazilian Beef Exports
Fonte / Source: SECEX-MDIC
INDUSTRIALIZADAS / PROCESSED

Destino / Country	ian 2005 - dez 2005			ian 2004 - dez 2004			% (2005x2004)		
	US\$ (000)	TONNES	US\$/Ton	US\$ (000)	TONNES	US\$/Ton	US\$ (000)	TONNES	US\$/Ton
GHANA	390	172	2.262	625	383	1.633	-38%	-55%	39%
NETHERLANDS ANTILLES	367	178	2.059	373	199	1.872	-2%	-10%	10%
GRENADA	346	157	2.205	213	118	1.811	62%	33%	22%
MOZAMBIQUE	344	182	1.892	402	215	1.864	-14%	-16%	2%
MEXICO	331	150	2.212	93	47	1.981	255%	218%	12%
ANTIGUA AND BARBUDA	331	157	2.111	381	208	1.830	-13%	-25%	15%
BELIZE	322	156	2.066	389	208	1.867	-17%	-25%	11%
SAINT VICENT AND THE GRANADINES	314	149	2.104	293	167	1.749	7%	-11%	20%
BOLIVIA	262	174	1.509	38	30	1.277	591%	485%	18%
SAINT LUCIA	238	116	2.056	200	105	1.904	19%	10%	8%
PARAGUAY	222	139	1.599	223	192	1.158	-1%	-28%	38%
BAHREIN	206	110	1.881	96	49	1.943	115%	122%	-3%
CAYMAN ISLANDS	205	99	2.075	172	92	1.878	19%	8%	11%
ARUBA	200	92	2.165	155	74	2.078	29%	24%	4%
DOMINICA ISLAND	172	86	1.989	141	82	1.731	22%	6%	15%
RUSSIA	170	9	19.001	125	74	1.685	36%	-88%	1.028%
ALGERIA	164	89	1.843	312	169	1.849	-47%	-47%	-0%
KIRIBATI	159	76	2.101	74	38	1.963	116%	102%	7%
SURINAME	152	84	1.814	113	73	1.550	34%	14%	17%
GUYANA	144	90	1.590	56	37	1.531	156%	147%	4%
PORTUGAL	134	92	1.458	54	41	1.327	148%	126%	10%
CAPE VERDE	129	85	1.524	49	36	1.365	163%	135%	12%
DENMARK	128	54	2.385	60	34	1.761	112%	56%	35%
PANAMA	122	64	1.914	189	117	1.615	-35%	-46%	19%
GAMBIA	110	79	1.400	26	19	1.393	319%	317%	1%
CHINA	104	19	5.338	55	21	2.606	89%	-8%	105%
IRAQ	97	51	1.887	0	0	-	-	-	-
URUGUAY	92	51	1.803	55	32	1.690	70%	59%	7%
PERU	92	20	4.610	119	22	5.500	-23%	-8%	-16%
MICRONESIA	91	51	1.766	21	17	1.218	335%	200%	45%
MONACO	82	34	2.396	34	16	2.109	142%	113%	14%
FRENCH POLYNESIA	79	34	2.304	0	0	-	-	-	-
BENIN	76	39	1.961	0	0	-	-	-	-
INDONESIA	75	34	2.201	60	34	1.740	26%	0%	26%
TANZANIA	75	34	2.199	0	0	-	-	-	-
MADAGASCAR	75	34	2.222	95	53	1.804	-21%	-36%	23%
THAILAND	71	17	4.134	54	13	4.162	32%	33%	-1%
VENEZUELA	67	15	4.459	359	274	1.308	-81%	-95%	241%
LIBERIA	65	37	1.757	54	35	1.535	21%	6%	14%
SENEGAL	63	44	1.425	32	17	1.884	99%	163%	-24%
BERMUDA	59	32	1.861	34	19	1.815	72%	68%	3%
FINLAND	57	13	4.206	0	0	-	-	-	-
SAMOA	54	18	3.002	72	34	2.092	-25%	-48%	43%
ZIMBABWE	50	32	1.547	0	0	-	-	-	-
TOTAL	538.810	181.409	2.970	456.781	173.423	2.634	18%	5%	13%



Exportações Brasileiras de Carne Bovina
 Brazilian Beef Exports
 Fonte / Source: SECEX-MDIC
INDUSTRIALIZADAS / PROCESSED

Destino / Country	ian 2005 - dez 2005			ian 2004 - dez 2004			% (2005x2004)		
	US\$ (000)	TONNES	US\$/Ton	US\$ (000)	TONNES	US\$/Ton	US\$ (000)	TONNES	US\$/Ton
SEYCHELLES	43	19	2.309	88	51	1.716	-51%	-63%	35%
LATVIA	40	25	1.598	0	0	-	-	-	-
GUAM	39	18	2.181	38	18	2.133	2%	0%	2%
VIRGIN ISLANDS (UK)	36	18	2.068	58	32	1.810	-37%	-45%	14%
SIERRA LEONE	35	20	1.743	0	0	-	-	-	-
COLOMBIA	34	5	6.705	93	18	5.219	-63%	-71%	28%
GABON	32	17	1.959	0	0	-	-	-	-
BRUNEI	32	12	2.622	0	0	-	-	-	-
UKRAINE	29	23	1.250	0	0	-	-	-	-
GIBRALTAR	29	15	1.930	84	42	2.019	-66%	-64%	-4%
SOUTH AFRICA	26	16	1.680	77	66	1.166	-66%	-77%	44%
ZAMBIA	25	16	1.547	0	0	-	-	-	-
NAMIBIA	22	15	1.429	0	0	-	-	-	-
CAMEROON	21	11	1.912	28	18	1.569	-24%	-38%	22%
ECUADOR	20	4	5.051	49	14	3.507	-58%	-71%	44%
DEMOCRATIC REPUBLIC OF THE C...	18	10	1.694	238	124	1.924	-93%	-92%	-12%
TURKS AND CAICOS, ISLANDS	9	5	1.925	6	3	1.716	65%	47%	12%
YUGOSLAVIA	5	6	807	0	0	-	-	-	-
CZECH REPUBLIC	3	0	25.941	0	0	-	-	-	-
ALBANIA	1	2	682	0	0	-	-	-	-
DJIBOUTI	1	0	1.260	0	0	-	-	-	-
GEORGIA	0	0	733	0	0	-	-	-	-
AZERBAIJAN	0	0	733	0	0	-	-	-	-
POLAND	0	0	-	43	19	2.215	-100%	-100%	-
TOGO	0	0	-	2	1	1.986	-100%	-100%	-
AMERICANA SAMOA	0	0	-	38	17	2.215	-100%	-100%	-
SAINT CHRISTOPHER AND NEVIS	0	0	-	28	17	1.694	-100%	-100%	-
SYRIA	0	0	-	94	66	1.411	-100%	-100%	-
TAIWAN	0	0	-	33	16	2.104	-100%	-100%	-
NORTH KOREA	0	0	-	186	33	5.723	-100%	-100%	-
AUSTRIA	0	0	-	99	15	6.619	-100%	-100%	-
YEMEN	0	0	-	23	16	1.452	-100%	-100%	-
NIGERIA	0	0	-	184	107	1.723	-100%	-100%	-
HAITI	0	0	-	1	0	1.823	-100%	-100%	-
GUINEA	0	0	-	31	20	1.569	-100%	-100%	-
FRENCH GUYANA	0	0	-	11	6	1.737	-100%	-100%	-
	538.810	181.409	2.970	456.781	173.423	2.634	18%	5%	13%



Exportações Brasileiras de Carne Bovina
Brazilian Beef Exports
Fonte / Source: SECEX-MDIC
MIÚDOS / OFFALS

ian 2005 - dez 2005

ian 2004 - dez 2004

%(2005x2004)

Destino / Country	US\$ (000)	TONNES	US\$/Ton	US\$ (000)	TONNES	US\$/Ton	US\$ (000)	TONNES	US\$/Ton
HONG KONG	30.357	32.248	941	34.100	30.662	1.112	-11%	5%	-15%
RUSSIA	9.532	7.702	1.238	3.368	3.867	871	183%	99%	42%
EGYPT	3.739	3.474	1.076	9.034	8.357	1.081	-59%	-58%	-0%
FRANCE	3.282	977	3.360	5.215	1.351	3.859	-37%	-28%	-13%
PERU	2.710	4.561	594	2.117	4.145	511	28%	10%	16%
CHINA	2.219	1.735	1.279	906	799	1.135	145%	117%	13%
ISRAEL	1.864	1.535	1.215	1.501	1.464	1.026	24%	5%	18%
COTE D'IVOIRE	1.527	3.292	464	1.557	2.772	562	-2%	19%	-17%
LITHUANIA	1.035	749	1.382	1.508	1.370	1.101	-31%	-45%	26%
KAZAKHSTAN	846	524	1.613	29	25	1.150	2.843%	1.998%	40%
SOUTH KOREA	612	720	850	406	514	790	51%	40%	8%
SAUDI ARABIA	579	522	1.108	719	674	1.067	-20%	-23%	4%
JAPAN	533	185	2.886	130	71	1.836	311%	162%	57%
UKRAINE	489	387	1.263	150	131	1.151	226%	197%	10%
NETHERLANDS	471	219	2.150	1.198	556	2.152	-61%	-61%	-0%
UNITED ARAB EMIRATES	390	313	1.247	387	293	1.323	1%	7%	-6%
SWITZERLAND	386	254	1.517	676	617	1.096	-43%	-59%	38%
ANGOLA	272	251	1.083	254	336	757	7%	-25%	43%
SOUTH AFRICA	246	287	855	524	618	848	-53%	-53%	1%
ALBANIA	204	375	545	12	20	580	1.648%	1.760%	-6%
POLAND	181	152	1.193	449	405	1.109	-60%	-63%	8%
LATVIA	176	104	1.684	74	75	978	138%	38%	72%
MOLDOVA	142	102	1.391	298	221	1.349	-52%	-54%	3%
KUWAIT	134	123	1.092	95	83	1.147	41%	48%	-5%
NETHERLANDS ANTILLES	131	93	1.406	154	111	1.388	-15%	-16%	1%
PORTUGAL	130	111	1.169	93	57	1.626	40%	95%	-28%
ITALY	123	94	1.301	564	474	1.190	-78%	-80%	9%
PARAGUAY	113	71	1.590	198	116	1.702	-43%	-39%	-7%
UNITED STATES	111	82	1.353	81	28	2.937	37%	196%	-54%
GERMANY	110	179	615	90	167	537	23%	7%	15%
ARGENTINA	106	97	1.089	105	148	708	1%	-34%	54%
SINGAPORE	104	112	928	160	134	1.196	-35%	-16%	-22%
LEBANON	103	199	518	10	14	735	901%	1.322%	-30%
YUGOSLAVIA	86	135	635	71	131	538	21%	2%	18%
JORDAN	82	100	825	20	25	800	312%	300%	3%
NORTH KOREA	82	73	1.118	148	199	745	-45%	-63%	50%
BERMUDA	64	42	1.499	65	43	1.527	-3%	-1%	-2%
MALAYSIA	61	48	1.258	75	37	2.011	-19%	30%	-37%
SPAIN	58	49	1.196	513	465	1.102	-89%	-89%	9%
GEORGIA	58	50	1.150	480	449	1.070	-88%	-89%	8%
BAHREIN	57	57	1.002	106	109	968	-46%	-48%	4%
QATAR	51	36	1.411	16	11	1.441	214%	220%	-2%
ARUBA	50	36	1.390	31	26	1.210	60%	40%	15%
BAHAMAS	41	26	1.561	25	18	1.431	62%	48%	9%
	64.075	63.119	1.015	69.015	63.409	1.088	-7%	-0%	-7%



Exportações Brasileiras de Carne Bovina
Brazilian Beef Exports
Fonte / Source: SECEX-MDIC
MIÚDOS / OFFALS

ian 2005 - dez 2005

ian 2004 - dez 2004

%(2005x2004)

Destino / Country	US\$ (000)	TONNES	US\$/Ton	US\$ (000)	TONNES	US\$/Ton	US\$ (000)	TONNES	US\$/Ton
CHILE	41	55	742	124	120	1.035	-67%	-54%	-28%
UNITED KINGDOM	36	76	469	17	14	1.188	110%	432%	-61%
UZBEKISTAN	35	25	1.400	0	0	-	-	-	-
BRUNEI	33	19	1.749	23	13	1.781	44%	47%	-2%
GREECE	28	51	555	49	69	716	-42%	-26%	-23%
CONGO	24	34	711	11	24	450	128%	44%	58%
GABON	24	62	390	69	128	542	-65%	-52%	-28%
GRENADA	23	22	1.050	27	26	1.023	-13%	-15%	3%
GHANA	19	51	381	52	75	700	-63%	-32%	-46%
PUERTO RICO	18	16	1.099	0	0	-	-	-	-
URUGUAY	15	25	600	45	57	776	-66%	-57%	-23%
VIETNAM	15	25	587	0	0	-	-	-	-
CZECH REPUBLIC	15	26	580	0	0	-	-	-	-
HUNGARY	13	25	500	0	0	-	-	-	-
MACEDONIA	13	25	500	18	33	551	-31%	-24%	-9%
OMAN	12	10	1.217	12	9	1.378	6%	20%	-12%
IRELAND	12	23	525	0	0	-	-	-	-
COMOROS	11	17	665	2	3	580	549%	466%	15%
LUXEMBOURG	10	26	400	0	0	-	-	-	-
PHILIPPINES	9	7	1.292	16	11	1.493	-47%	-39%	-13%
CAPE VERDE	8	6	1.440	9	8	1.168	-10%	-27%	23%
AUSTRALIA	5	4	1.320	0	0	-	-	-	-
ALGERIA	4	2	1.826	0	0	-	-	-	-
SEYCHELLES	3	2	1.511	0	0	-	-	-	-
SAINT VICENT AND THE GRANADINES	2	1	1.450	0	0	-	-	-	-
EQUATORIAL GUINEA	1	1	1.214	0	0	-	-	-	-
TURKEY	1	1	1.527	2	2	1.071	-60%	-72%	43%
SÃO TOME AND PRINCIPE	0	0	1.352	0	0	-	-	-	-
ROMANIA	0	0	-	23	28	834	-100%	-100%	-
VENEZUELA	0	0	-	77	72	1.076	-100%	-100%	-
SIERRA LEONE	0	0	-	0	0	651	-100%	-100%	-
ESTONIA	0	0	-	55	50	1.100	-100%	-100%	-
GUATEMALA	0	0	-	2	2	1.030	-100%	-100%	-
CANARY, ISLANDS	0	0	-	4	3	1.100	-100%	-100%	-
DEMOCRATIC REPUBLIC OF THE C...	0	0	-	27	48	564	-100%	-100%	-
DENMARK	0	0	-	29	53	554	-100%	-100%	-
DOMINICA ISLAND	0	0	-	29	25	1.150	-100%	-100%	-
BULGARIA	0	0	-	5	5	1.021	-100%	-100%	-
MOZAMBIQUE	0	0	-	2	2	851	-100%	-100%	-
MONACO	0	0	-	12	25	480	-100%	-100%	-
MYANMAR	0	0	-	310	238	1.304	-100%	-100%	-
INDONESIA	0	0	-	21	10	2.100	-100%	-100%	-
HAITI	0	0	-	0	0	1.582	-100%	-100%	-
BELGIUM	0	0	-	231	69	3.356	-100%	-100%	-
	64.075	63.119	1.015	69.015	63.409	1.088	-7%	-0%	-7%



Exportações Brasileiras de Carne Bovina
 Brazilian Beef Exports
 Fonte / Source: SECEX-MDIC
SALGADAS / SALTED

ian 2005 - dez 2005

ian 2004 - dez 2004

%(2005x2004)

Destino / Country	US\$ (000)	TONNES	US\$/Ton	US\$ (000)	TONNES	US\$/Ton	US\$ (000)	TONNES	US\$/Ton
ANGOLA	5.849	2.997	1.951	7.564	4.454	1.698	-23%	-33%	15%
NETHERLANDS	361	44	8.214	612	34	18.260	-41%	31%	-55%
UNITED KINGDOM	185	13	14.052	501	28	17.644	-63%	-54%	-20%
ISRAEL	86	38	2.279	0	0	-	-	-	-
PORTUGAL	57	22	2.556	0	0	-	-	-	-
RUSSIA	57	3	19.001	0	0	-	-	-	-
CONGO	53	23	2.350	0	0	-	-	-	-
SPAIN	34	17	1.965	0	0	-	-	-	-
GERMANY	11	4	2.830	0	0	-	-	-	-
CHILE	3	0	10.370	8	0	20.654	-62%	-23%	-50%
SOUTH AFRICA	1	0	13.775	0	0	-	-	-	-
MACAO	0	0	1.700	0	0	-	-	-	-
NEW ZEALAND	0	0	-	1	0	8.640	-100%	-100%	-
MOZAMBIQUE	0	0	-	2	1	2.500	-100%	-100%	-
URUGUAY	0	0	-	43	23	1.890	-100%	-100%	-
CAPE VERDE	0	0	-	4	2	2.509	-100%	-100%	-
DENMARK	0	0	-	0	0	2.380	-100%	-100%	-
	6.696	3.162	2.118	8.735	4.542	1.923	-23%	-30%	10%



Exportações Brasileiras de Carne Bovina
Brazilian Beef Exports
 Fonte / Source: SECEX-MDIC
TRIPAS / CASINGS

ian 2005 - dez 2005

ian 2004 - dez 2004

%(2005x2004)

Destino / Country	US\$ (000)	TONNES	US\$/Ton	US\$ (000)	TONNES	US\$/Ton	US\$ (000)	TONNES	US\$/Ton
GERMANY	12.444	5.891	2.112	10.885	3.970	2.741	14%	48%	-23%
RUSSIA	7.940	3.796	2.092	5.803	2.293	2.531	37%	66%	-17%
ITALY	5.894	2.642	2.231	5.191	2.033	2.553	14%	30%	-13%
SPAIN	5.132	3.935	1.304	3.904	2.222	1.757	31%	77%	-26%
NETHERLANDS	2.476	1.136	2.180	918	476	1.930	170%	139%	13%
HONG KONG	1.386	1.431	968	313	434	722	342%	230%	34%
PARAGUAY	1.360	1.477	920	446	701	637	205%	111%	44%
FRANCE	1.353	629	2.151	1.425	538	2.648	-5%	17%	-19%
UNITED STATES	1.268	459	2.761	922	309	2.987	38%	49%	-8%
AUSTRIA	1.139	591	1.925	2.477	854	2.902	-54%	-31%	-34%
PORTUGAL	1.119	700	1.599	1.002	495	2.027	12%	42%	-21%
UKRAINE	695	377	1.847	105	42	2.522	563%	805%	-27%
SWITZERLAND	622	302	2.060	1.865	799	2.333	-67%	-62%	-12%
ARGENTINA	562	632	889	361	458	788	56%	38%	13%
URUGUAY	371	230	1.612	1.443	997	1.448	-74%	-77%	11%
MEXICO	326	0	883.420	0	0	-	-	-	-
POLAND	310	258	1.200	112	72	1.559	178%	261%	-23%
SOUTH AFRICA	187	147	1.277	199	126	1.575	-6%	16%	-19%
CZECH REPUBLIC	185	105	1.767	0	0	-	-	-	-
PERU	184	195	946	37	5	7.800	397%	4.000%	-88%
ESTONIA	177	129	1.373	0	0	-	-	-	-
IRELAND	144	64	2.259	30	22	1.367	379%	190%	65%
CROATIA	86	62	1.378	0	0	-	-	-	-
UNITED KINGDOM	62	24	2.584	0	0	-	-	-	-
NORWAY	42	21	2.018	0	0	-	-	-	-
VIETNAM	28	76	367	70	350	200	-60%	-78%	84%
GREECE	26	20	1.268	0	0	-	-	-	-
CHINA	24	25	970	0	0	-	-	-	-
SLOVENIA	24	21	1.146	35	17	2.004	-32%	19%	-43%
ISRAEL	22	8	2.667	21	7	2.864	6%	14%	-7%
TURKEY	11	0	547.500	2	0	441.500	520%	400%	24%
THAILAND	10	0	1.118.889	6	0	701.250	80%	13%	60%
CANARY, ISLANDS	8	7	1.143	0	0	-	-	-	-
NETHERLANDS ANTILLES	4	4	1.086	0	0	-	-	-	-
UNITED ARAB EMIRATES	2	2	1.044	1	1	850	60%	31%	23%
ARUBA	2	2	1.000	3	3	850	-28%	-38%	18%
MYANMAR	0	0	-	158	472	335	-100%	-100%	-
DENMARK	0	0	-	167	59	2.812	-100%	-100%	-
EGYPT	0	0	-	18	23	778	-100%	-100%	-
JAPAN	0	0	-	4	1	7.341	-100%	-100%	-
MALAYSIA	0	0	-	5	5	1.074	-100%	-100%	-
PHILIPPINES	0	0	-	26	17	1.525	-100%	-100%	-
HUNGARY	0	0	-	31	42	741	-100%	-100%	-
TOTAL	45.624	25.398	1.796	37.983	17.841	2.129	20%	42%	-16%



Exportações Brasileiras de Carne Bovina
Brazilian Beef Exports
Fonte / Source: SECEX-MDIC
TOTAL POR PAÍS / TOTAL PER COUNTRY

Destino / Country	ian 2005 - dez 2005			ian 2004 - dez 2004			% (2005x2004)		
	US\$ (000)	TONNES	US\$/Ton	US\$ (000)	TONNES	US\$/Ton	US\$ (000)	TONNES	US\$/Ton
RUSSIA	572.971	306.163	1.871	248.402	160.623	1.546	131%	91%	21%
UNITED KINGDOM	312.577	118.597	2.636	250.540	99.527	2.517	25%	19%	5%
EGYPT	261.846	152.539	1.717	174.547	122.665	1.423	50%	24%	21%
NETHERLANDS	220.595	52.163	4.229	233.105	55.599	4.193	-5%	-6%	1%
UNITED STATES	208.752	52.544	3.973	199.624	56.144	3.556	5%	-6%	12%
ITALY	190.351	57.895	3.288	162.796	50.637	3.215	17%	14%	2%
CHILE	140.769	67.126	2.097	200.209	105.163	1.904	-30%	-36%	10%
GERMANY	108.812	29.190	3.728	107.713	28.233	3.815	1%	3%	-2%
HONG KONG	75.886	56.149	1.352	78.656	54.444	1.445	-4%	3%	-6%
ALGERIA	75.861	42.077	1.803	61.746	38.808	1.591	23%	8%	13%
BULGARIA	69.424	44.497	1.560	27.341	20.630	1.325	154%	116%	18%
SPAIN	63.049	19.671	3.205	82.084	22.626	3.628	-23%	-13%	-12%
SAUDI ARABIA	60.435	29.424	2.054	75.049	43.249	1.735	-19%	-32%	18%
ISRAEL	43.541	24.009	1.814	44.311	24.848	1.783	-2%	-3%	2%
SWITZERLAND	38.627	9.609	4.020	32.600	9.719	3.354	18%	-1%	20%
ROMANIA	37.832	23.523	1.608	35	39	895	108.794%	60.524%	80%
SWEDEN	35.852	7.501	4.780	34.790	7.172	4.851	3%	5%	-1%
LEBANON	35.146	15.889	2.212	27.779	13.278	2.092	27%	20%	6%
UKRAINE	34.402	20.877	1.648	1.870	1.389	1.347	1.739%	1.403%	22%
FRANCE	33.196	11.939	2.781	23.679	7.957	2.976	40%	50%	-7%
PHILIPPINES	32.940	20.763	1.586	44.270	35.861	1.234	-26%	-42%	29%
LIBYA	26.963	15.206	1.773	17.727	11.583	1.530	52%	31%	16%
SINGAPORE	24.479	12.124	2.019	20.688	11.969	1.728	18%	1%	17%
IRELAND	24.228	8.060	3.006	23.339	9.724	2.400	4%	-17%	25%
UNITED ARAB EMIRATES	20.821	8.818	2.361	17.370	8.204	2.117	20%	7%	12%
VENEZUELA	19.343	9.157	2.112	22.126	11.047	2.003	-13%	-17%	5%
ANGOLA	17.307	8.714	1.986	17.510	10.514	1.665	-1%	-17%	19%
SOUTH AFRICA	16.859	11.362	1.484	14.445	10.850	1.331	17%	5%	11%
PORTUGAL	16.282	4.684	3.476	19.050	5.184	3.675	-15%	-10%	-5%
BELGIUM	16.163	4.841	3.339	10.075	2.809	3.586	60%	72%	-7%
JAPAN	14.424	3.845	3.752	9.530	2.999	3.178	51%	28%	18%
CANARY, ISLANDS	14.012	3.694	3.793	1.697	875	1.940	726%	322%	96%
FINLAND	13.312	1.779	7.481	10.289	1.456	7.068	29%	22%	6%
IRAN	11.837	6.908	1.713	102.073	63.594	1.605	-88%	-89%	7%
JAMAICA	11.336	4.942	2.294	9.206	4.871	1.890	23%	1%	21%
DENMARK	11.305	2.538	4.454	11.499	2.421	4.750	-2%	5%	-6%
KUWAIT	10.794	5.844	1.847	7.428	4.165	1.783	45%	40%	4%
CANADA	9.911	4.168	2.378	4.369	2.165	2.018	127%	93%	18%
JORDAN	9.525	5.282	1.803	4.375	2.400	1.823	118%	120%	-1%
GREECE	8.786	4.070	2.159	8.861	3.948	2.244	-1%	3%	-4%
NORWAY	8.115	1.392	5.831	10.599	1.654	6.407	-23%	-16%	-9%
URUGUAY	8.029	4.429	1.813	2.651	1.633	1.623	203%	171%	12%
MALAYSIA	6.819	3.720	1.833	3.257	1.995	1.633	109%	86%	12%
MACEDONIA	6.057	3.362	1.801	4.221	2.829	1.492	43%	19%	21%
TOTAL	3.074.317	1.358.679	2.263	2.535.619	1.184.295	2.141	21%	15%	6%



Exportações Brasileiras de Carne Bovina
Brazilian Beef Exports
Fonte / Source: SECEX-MDIC
TOTAL POR PAÍS / TOTAL PER COUNTRY

Destino / Country	ian 2005 - dez 2005			ian 2004 - dez 2004			%(2005x2004)		
	US\$ (000)	TONNES	US\$/Ton	US\$ (000)	TONNES	US\$/Ton	US\$ (000)	TONNES	US\$/Ton
CROATIA	5.703	2.812	2.028	1.203	797	1.509	374%	253%	34%
SOUTH KOREA	5.313	3.382	1.571	3.892	2.759	1.411	36%	23%	11%
ALBANIA	4.832	2.513	1.923	1.535	1.047	1.465	215%	140%	31%
MALTA	4.309	1.432	3.010	7.187	2.256	3.186	-40%	-37%	-6%
PUERTO RICO	4.042	1.605	2.518	3.120	1.498	2.083	30%	7%	21%
POLAND	3.896	2.337	1.667	1.828	1.312	1.393	113%	78%	20%
TRINIDAD AND TOBAGO	3.886	2.098	1.852	2.365	1.480	1.598	64%	42%	16%
COTE D'IVOIRE	3.768	5.109	737	2.528	3.675	688	49%	39%	7%
PERU	3.708	5.357	692	2.853	4.772	598	30%	12%	16%
MOLDOVA	3.148	1.843	1.708	1.364	922	1.480	131%	100%	15%
YUGOSLAVIA	2.936	1.615	1.818	1.530	1.047	1.462	92%	54%	24%
CHINA	2.499	1.886	1.325	1.429	1.163	1.228	75%	62%	8%
QATAR	2.208	943	2.341	1.845	895	2.061	20%	5%	14%
LITHUANIA	2.068	1.473	1.404	2.015	1.715	1.175	3%	-14%	20%
CYPRUS	2.023	609	3.321	2.268	368	6.160	-11%	65%	-46%
CUBA	1.984	1.436	1.382	1.230	1.102	1.116	61%	30%	24%
GABON	1.982	1.446	1.371	376	364	1.032	427%	297%	33%
KAZAKHSTAN	1.890	1.097	1.723	501	376	1.332	277%	191%	29%
MAURITIUS	1.842	772	2.385	1.921	906	2.121	-4%	-15%	12%
BAHREIN	1.794	815	2.202	1.988	1.078	1.845	-10%	-24%	19%
PARAGUAY	1.695	1.687	1.004	867	1.010	859	95%	67%	17%
COMOROS	1.451	1.003	1.447	736	611	1.204	97%	64%	20%
NETHERLANDS ANTILLES	1.431	758	1.889	1.764	1.026	1.720	-19%	-26%	10%
GHANA	1.425	889	1.604	1.300	950	1.369	10%	-6%	17%
MOZAMBIQUE	1.277	720	1.774	1.012	620	1.633	26%	16%	9%
EQUATORIAL GUINEA	1.261	336	3.749	947	201	4.702	33%	67%	-20%
BAHAMAS	1.259	719	1.751	1.578	992	1.591	-20%	-28%	10%
AUSTRIA	1.139	591	1.925	2.577	869	2.967	-56%	-32%	-35%
ARUBA	1.121	526	2.131	997	560	1.779	12%	-6%	20%
OMAN	995	511	1.946	692	356	1.941	44%	43%	0%
UZBEKISTAN	923	501	1.844	65	50	1.300	1.318%	900%	42%
BARBADOS	773	392	1.972	681	406	1.678	13%	-3%	17%
ARGENTINA	723	752	962	466	606	768	55%	24%	25%
CAPE VERDE	684	260	2.630	616	219	2.807	11%	19%	-6%
AUSTRALIA	676	331	2.043	881	408	2.160	-23%	-19%	-5%
MEXICO	657	150	4.378	93	47	1.981	604%	219%	121%
CONGO	640	331	1.935	335	177	1.893	91%	87%	2%
KENYA	629	325	1.940	152	88	1.718	315%	268%	13%
NEW ZEALAND	629	167	3.755	777	280	2.772	-19%	-40%	35%
SENEGAL	625	376	1.660	378	265	1.428	65%	42%	16%
LATVIA	531	304	1.746	286	324	884	86%	-6%	98%
BERMUDA	511	275	1.857	273	156	1.758	87%	77%	6%
GRENADA	465	236	1.972	304	180	1.685	53%	31%	17%
VIRGIN ISLANDS (UK)	460	256	1.796	204	134	1.516	126%	91%	18%
TOTAL	3.074.317	1.358.679	2.263	2.535.619	1.184.295	2.141	21%	15%	6%



Exportações Brasileiras de Carne Bovina
Brazilian Beef Exports
 Fonte / Source: SECEX-MDIC
TOTAL POR PAÍS / TOTAL PER COUNTRY

Destino / Country	ian 2005 - dez 2005			ian 2004 - dez 2004			% (2005x2004)		
	US\$ (000)	TONNES	US\$/Ton	US\$ (000)	TONNES	US\$/Ton	US\$ (000)	TONNES	US\$/Ton
HAITI	389	170	2.284	44	19	2.318	788%	802%	-1%
MONACO	375	130	2.894	236	87	2.705	59%	49%	7%
SAINT VICENT AND THE GRANADINES	352	174	2.025	293	167	1.749	20%	4%	16%
TURKEY	352	127	2.775	541	328	1.648	-35%	-61%	68%
ANTIGUA AND BARBUDA	331	157	2.111	381	208	1.830	-13%	-25%	15%
BELIZE	322	156	2.066	389	208	1.867	-17%	-25%	11%
TAIWAN	314	195	1.614	36	17	2.155	777%	1.071%	-25%
BRUNEI	301	265	1.134	127	50	2.539	138%	432%	-55%
GIBRALTAR	264	64	4.135	483	97	4.993	-45%	-34%	-17%
BOLIVIA	262	174	1.509	38	30	1.277	591%	485%	18%
GAMBIA	255	150	1.700	113	69	1.634	126%	118%	4%
CAYMAN ISLANDS	253	124	2.046	172	92	1.878	47%	35%	9%
ESTONIA	247	154	1.604	446	176	2.538	-45%	-12%	-37%
LIBERIA	244	127	1.927	192	161	1.193	27%	-21%	62%
SAINT LUCIA	238	116	2.056	200	105	1.904	19%	10%	8%
DEMOCRATIC REPUBLIC OF THE C...	231	108	2.140	265	171	1.546	-13%	-37%	38%
BOSNIA AND HERZEGOVINA	229	124	1.852	0	0	-	-	-	-
HUNGARY	221	100	2.204	216	68	3.187	3%	48%	-31%
MALDIVES	213	87	2.444	268	109	2.445	-20%	-20%	-0%
SRI LANKA	208	74	2.807	302	113	2.687	-31%	-34%	4%
NORTH KOREA	203	167	1.220	1.860	1.260	1.476	-89%	-87%	-17%
CZECH REPUBLIC	202	130	1.554	211	21	9.830	-4%	506%	-84%
GUINEA	194	37	5.300	31	20	1.569	520%	84%	238%
DOMINICA ISLAND	172	86	1.989	170	107	1.593	1%	-19%	25%
GEORGIA	170	125	1.360	535	475	1.127	-68%	-74%	21%
KIRIBATI	159	76	2.101	74	38	1.963	116%	102%	7%
SURINAME	152	84	1.814	113	73	1.550	34%	14%	17%
TAJIKISTAN	148	99	1.488	0	0	-	-	-	-
GUYANA	144	90	1.590	56	37	1.531	156%	147%	4%
SEYCHELLES	137	58	2.375	88	51	1.716	56%	13%	38%
PANAMA	122	64	1.914	189	117	1.615	-35%	-46%	19%
NAMIBIA	107	99	1.077	0	0	-	-	-	-
IRAQ	97	51	1.887	0	0	-	-	-	-
MICRONESIA	91	51	1.766	21	17	1.218	335%	200%	45%
THAILAND	81	17	4.720	59	13	4.595	37%	33%	3%
FRENCH POLYNESIA	79	34	2.304	0	0	-	-	-	-
AFGHANISTAN	78	25	3.113	0	0	-	-	-	-
BENIN	76	39	1.961	0	0	-	-	-	-
FAROE ISLANDS	75	23	3.351	515	153	3.367	-85%	-85%	-0%
INDONESIA	75	34	2.201	555	334	1.659	-86%	-90%	33%
TANZANIA	75	34	2.199	0	0	-	-	-	-
MADAGASCAR	75	34	2.222	95	53	1.804	-21%	-36%	23%
SLOVENIA	59	46	1.285	134	29	4.539	-56%	56%	-72%
PAKISTAN	57	12	4.750	0	0	-	-	-	-
TOTAL	3.074.317	1.358.679	2.263	2.535.619	1.184.295	2.141	21%	15%	6%



Exportações Brasileiras de Carne Bovina
Brazilian Beef Exports
 Fonte / Source: SECEX-MDIC
TOTAL POR PAÍS / TOTAL PER COUNTRY

Destino / Country	ian 2005 - dez 2005			ian 2004 - dez 2004			% (2005x2004)		
	US\$ (000)	TONNES	US\$/Ton	US\$ (000)	TONNES	US\$/Ton	US\$ (000)	TONNES	US\$/Ton
SAMOA	54	18	3.002	72	34	2.092	-25%	-48%	43%
ZIMBABWE	50	32	1.547	0	0	-	-	-	-
ARMENIA	45	25	1.785	51	24	2.100	-12%	4%	-15%
VIETNAM	43	101	423	70	350	200	-39%	-71%	111%
CAMEROON	42	26	1.623	58	32	1.836	-28%	-18%	-12%
GUAM	39	18	2.181	38	18	2.133	2%	0%	2%
SIERRA LEONE	35	20	1.743	47	23	2.040	-26%	-13%	-15%
COLOMBIA	34	5	6.705	93	18	5.219	-63%	-71%	28%
DJIBOUTI	29	8	3.802	30	13	2.353	-4%	-41%	62%
SÃO TOME AND PRINCIPE	26	8	3.177	3	1	2.527	765%	588%	26%
FRENCH GUYANA	25	14	1.800	11	6	1.737	141%	133%	4%
ZAMBIA	25	16	1.547	0	0	-	-	-	-
ECUADOR	20	4	5.051	49	14	3.507	-58%	-71%	44%
MACAO	15	3	5.803	0	0	-	-	-	-
LUXEMBOURG	10	26	400	5	1	5.170	115%	2.675%	-92%
TURKS AND CAICOS, ISLANDS	9	5	1.925	6	3	1.716	65%	47%	12%
AZERBAIJAN	0	0	733	0	0	-	-	-	-
SYRIA	0	0	-	124	90	1.382	-100%	-100%	-
SAINT CHRISTOPHER AND NEVIS	0	0	-	28	17	1.694	-100%	-100%	-
TOGO	0	0	-	2	1	1.986	-100%	-100%	-
AMERICANA SAMOA	0	0	-	38	17	2.215	-100%	-100%	-
GUATEMALA	0	0	-	26	13	2.029	-100%	-100%	-
YEMEN	0	0	-	52	41	1.259	-100%	-100%	-
INDIA	0	0	-	116	60	1.913	-100%	-100%	-
NIGERIA	0	0	-	219	132	1.662	-100%	-100%	-
MARTINIQUE	0	0	-	40	13	3.109	-100%	-100%	-
MYANMAR	0	0	-	469	710	660	-100%	-100%	-
ISLE OF MAN	0	0	-	33	25	1.330	-100%	-100%	-
	3.074.317	1.358.679	2.263	2.535.619	1.184.295	2.141	21%	15%	6%