

**Exportações Brasileiras de Carne Bovina  
Brazilian Beef Exports**

**Fonte / Source: SECEX-MDIC**



**Categorias / Products:  
IN NATURA / FRESH BEEF, INDUSTRIALIZADAS / PROCESSED, MIÚDOS /  
OFFALS, SALGADAS / SALTED, TRIPAS / CASINGS**

**Periodo: jan/2000 - dez/2000**



**Exportações Brasileiras de Carne Bovina  
Brazilian Beef Exports**

Fonte / Source: SECEX-MDIC

**2000** **1999** **%(2000x1999)**

Janeiro / January	US\$ (000)	TONNES	US\$/Ton	US\$ (000)	TONNES	US\$/Ton	US\$ (000)	TONNES	US\$/Ton
IN NATURA / FRESH BEEF	25.537	9.793	2.608	15.392	4.375	3.518	66%	124%	-26%
INDUSTRIALIZADAS / PROCESSED	24.896	10.995	2.264	25.746	8.348	3.084	-3%	32%	-27%
TRIPAS / CASINGS	2.049	1.243	1.648	2.288	983	2.328	-10%	26%	-29%
MIÚDOS / OFFALS	2.224	1.927	1.154	1.046	1.045	1.001	113%	85%	15%
SALGADAS / SALTED	168	73	2.302	5	2	2.895	3.044%	3.854%	-20%
	<b>54.873</b>	<b>24.031</b>	<b>2.283</b>	<b>44.477</b>	<b>14.753</b>	<b>3.015</b>	<b>23%</b>	<b>63%</b>	<b>-24%</b>

**2000** **1999** **%(2000x1999)**

Fevereiro / February	US\$ (000)	TONNES	US\$/Ton	US\$ (000)	TONNES	US\$/Ton	US\$ (000)	TONNES	US\$/Ton
IN NATURA / FRESH BEEF	35.863	12.811	2.799	26.463	7.854	3.369	36%	63%	-17%
INDUSTRIALIZADAS / PROCES...	20.321	9.156	2.220	25.324	8.458	2.994	-20%	8%	-26%
TRIPAS / CASINGS	2.895	1.796	1.612	2.140	963	2.222	35%	86%	-27%
MIÚDOS / OFFALS	2.124	2.227	954	1.047	924	1.133	103%	141%	-16%
SALGADAS / SALTED	62	29	2.129	11	5	2.153	484%	490%	-1%
	<b>61.265</b>	<b>26.019</b>	<b>2.355</b>	<b>54.985</b>	<b>18.204</b>	<b>3.020</b>	<b>11%</b>	<b>43%</b>	<b>-22%</b>

**2000** **1999** **%(2000x1999)**

Março / March	US\$ (000)	TONNES	US\$/Ton	US\$ (000)	TONNES	US\$/Ton	US\$ (000)	TONNES	US\$/Ton
IN NATURA / FRESH BEEF	40.821	14.788	2.760	38.599	11.837	3.261	6%	25%	-15%
INDUSTRIALIZADAS / PROCES...	21.298	9.669	2.203	35.974	12.553	2.866	-41%	-23%	-23%
TRIPAS / CASINGS	2.075	1.284	1.616	2.559	1.283	1.995	-19%	0%	-19%
MIÚDOS / OFFALS	2.328	2.063	1.129	1.431	1.349	1.061	63%	53%	6%
SALGADAS / SALTED	1.014	373	2.720	154	69	2.243	560%	444%	21%
	<b>67.536</b>	<b>28.177</b>	<b>2.397</b>	<b>78.716</b>	<b>27.089</b>	<b>2.906</b>	<b>-14%</b>	<b>4%</b>	<b>-18%</b>

**2000** **1999** **%(2000x1999)**

Abril / April	US\$ (000)	TONNES	US\$/Ton	US\$ (000)	TONNES	US\$/Ton	US\$ (000)	TONNES	US\$/Ton
IN NATURA / FRESH BEEF	42.221	15.290	2.761	36.186	11.813	3.063	17%	29%	-10%
INDUSTRIALIZADAS / PROCESSED	23.186	10.558	2.196	36.445	12.774	2.853	-36%	-17%	-23%
TRIPAS / CASINGS	2.551	1.535	1.662	2.787	1.406	1.982	-8%	9%	-16%
MIÚDOS / OFFALS	1.716	1.580	1.086	1.189	1.204	988	44%	31%	10%
SALGADAS / SALTED	186	80	2.323	716	270	2.650	-74%	-70%	-12%
	<b>69.860</b>	<b>29.044</b>	<b>2.405</b>	<b>77.323</b>	<b>27.466</b>	<b>2.815</b>	<b>-10%</b>	<b>6%</b>	<b>-15%</b>

**2000** **1999** **%(2000x1999)**

Maior / May	US\$ (000)	TONNES	US\$/Ton	US\$ (000)	TONNES	US\$/Ton	US\$ (000)	TONNES	US\$/Ton
IN NATURA / FRESH BEEF	52.803	19.381	2.725	38.926	13.089	2.974	36%	48%	-8%
INDUSTRIALIZADAS / PROCES...	26.245	12.161	2.158	32.187	13.015	2.473	-18%	-7%	-13%
TRIPAS / CASINGS	2.261	1.550	1.458	2.421	1.101	2.200	-7%	41%	-34%
MIÚDOS / OFFALS	2.383	2.295	1.038	1.347	1.299	1.037	77%	77%	0%
SALGADAS / SALTED	39	13	3.104	8	4	2.173	376%	233%	43%
	<b>83.732</b>	<b>35.400</b>	<b>2.365</b>	<b>74.889</b>	<b>28.508</b>	<b>2.627</b>	<b>12%</b>	<b>24%</b>	<b>-10%</b>

**2000** **1999** **%(2000x1999)**

Junho / June	US\$ (000)	TONNES	US\$/Ton	US\$ (000)	TONNES	US\$/Ton	US\$ (000)	TONNES	US\$/Ton
IN NATURA / FRESH BEEF	51.825	19.852	2.611	45.605	16.832	2.709	14%	18%	-4%
INDUSTRIALIZADAS / PROCESSED	27.431	12.703	2.159	32.750	12.626	2.594	-16%	1%	-17%
TRIPAS / CASINGS	2.208	1.449	1.523	2.809	1.405	1.999	-21%	3%	-24%
MIÚDOS / OFFALS	2.757	2.773	994	1.387	1.332	1.041	99%	108%	-5%
SALGADAS / SALTED	106	47	2.268	14	7	2.179	641%	612%	4%
	<b>84.326</b>	<b>36.823</b>	<b>2.290</b>	<b>82.566</b>	<b>32.202</b>	<b>2.564</b>	<b>2%</b>	<b>14%</b>	<b>-11%</b>



**Exportações Brasileiras de Carne Bovina  
Brazilian Beef Exports**

Fonte / Source: SECEX-MDIC

**2000** **1999** **%(2000x1999)**

Julho / July	US\$ (000)	TONNES	US\$/Ton	US\$ (000)	TONNES	US\$/Ton	US\$ (000)	TONNES	US\$/Ton
IN NATURA / FRESH BEEF	50.940	19.265	2.644	33.529	12.099	2.771	52%	59%	-5%
INDUSTRIALIZADAS / PROCES...	23.919	11.282	2.120	26.895	10.794	2.492	-11%	5%	-15%
TRIPAS / CASINGS	2.712	1.646	1.647	2.666	1.287	2.071	2%	28%	-20%
MIÚDOS / OFFALS	2.357	2.167	1.087	1.439	1.385	1.039	64%	56%	5%
SALGADAS / SALTED	910	366	2.485	691	271	2.548	32%	35%	-3%
	<b>80.837</b>	<b>34.727</b>	<b>2.328</b>	<b>65.220</b>	<b>25.836</b>	<b>2.524</b>	<b>24%</b>	<b>34%</b>	<b>-8%</b>

**2000** **1999** **%(2000x1999)**

Agosto / August	US\$ (000)	TONNES	US\$/Ton	US\$ (000)	TONNES	US\$/Ton	US\$ (000)	TONNES	US\$/Ton
IN NATURA / FRESH BEEF	48.932	18.913	2.587	48.398	17.264	2.803	1%	10%	-8%
INDUSTRIALIZADAS / PROCES...	21.761	10.035	2.169	33.438	13.931	2.400	-35%	-28%	-10%
TRIPAS / CASINGS	2.485	1.489	1.669	2.827	1.484	1.905	-12%	0%	-12%
MIÚDOS / OFFALS	2.382	2.131	1.118	1.791	1.771	1.011	33%	20%	11%
SALGADAS / SALTED	129	40	3.236	0	0	-	-	-	-
	<b>75.689</b>	<b>32.607</b>	<b>2.321</b>	<b>86.454</b>	<b>34.450</b>	<b>2.510</b>	<b>-12%</b>	<b>-5%</b>	<b>-8%</b>

**2000** **1999** **%(2000x1999)**

Setembro / September	US\$ (000)	TONNES	US\$/Ton	US\$ (000)	TONNES	US\$/Ton	US\$ (000)	TONNES	US\$/Ton
IN NATURA / FRESH BEEF	39.916	14.863	2.686	40.650	14.862	2.735	-2%	0%	-2%
INDUSTRIALIZADAS / PROCES...	18.736	8.620	2.174	29.242	12.565	2.327	-36%	-31%	-7%
TRIPAS / CASINGS	2.095	1.342	1.560	2.766	1.517	1.823	-24%	-12%	-14%
MIÚDOS / OFFALS	2.266	2.072	1.094	1.975	1.973	1.001	15%	5%	9%
SALGADAS / SALTED	71	17	4.210	159	56	2.822	-55%	-70%	49%
	<b>63.084</b>	<b>26.914</b>	<b>2.344</b>	<b>74.791</b>	<b>30.974</b>	<b>2.415</b>	<b>-16%</b>	<b>-13%</b>	<b>-3%</b>

**2000** **1999** **%(2000x1999)**

Outubro / October	US\$ (000)	TONNES	US\$/Ton	US\$ (000)	TONNES	US\$/Ton	US\$ (000)	TONNES	US\$/Ton
IN NATURA / FRESH BEEF	33.585	12.623	2.661	38.938	13.354	2.916	-14%	-5%	-9%
INDUSTRIALIZADAS / PROCES...	25.076	10.888	2.303	25.508	11.036	2.311	-2%	-1%	-0%
TRIPAS / CASINGS	2.191	1.478	1.482	3.090	1.633	1.893	-29%	-9%	-22%
MIÚDOS / OFFALS	2.410	2.237	1.077	1.343	1.251	1.073	79%	79%	0%
SALGADAS / SALTED	188	54	3.480	765	292	2.616	-75%	-82%	33%
	<b>63.449</b>	<b>27.280</b>	<b>2.326</b>	<b>69.644</b>	<b>27.566</b>	<b>2.526</b>	<b>-9%</b>	<b>-1%</b>	<b>-8%</b>

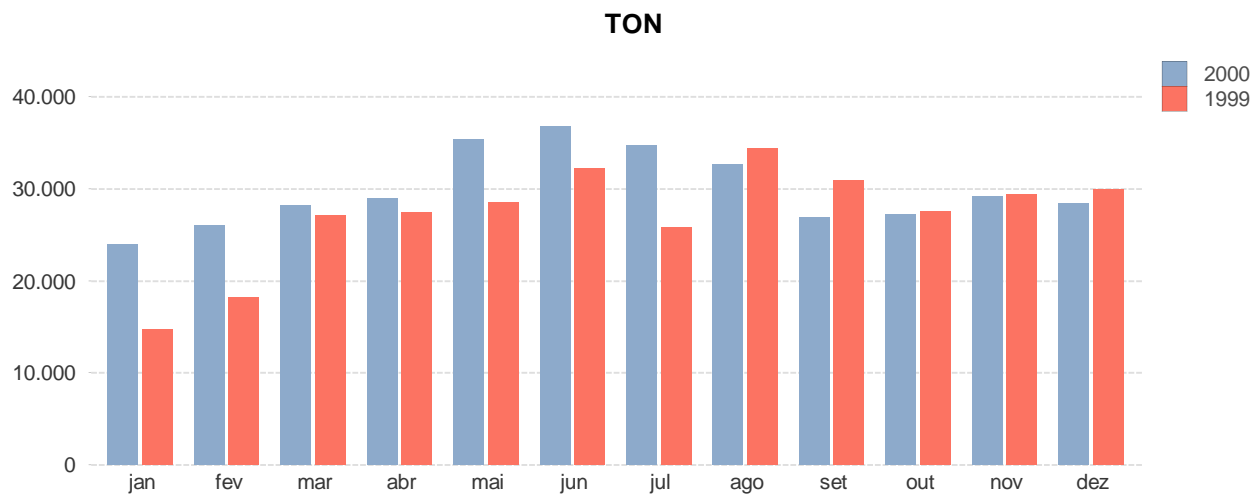
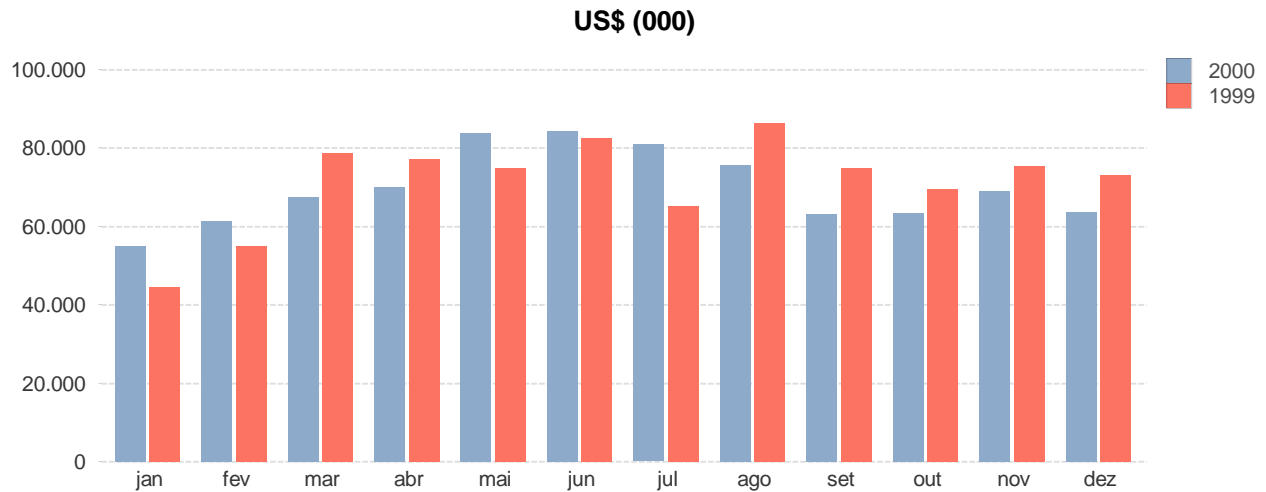
**2000** **1999** **%(2000x1999)**

Novembro / November	US\$ (000)	TONNES	US\$/Ton	US\$ (000)	TONNES	US\$/Ton	US\$ (000)	TONNES	US\$/Ton
IN NATURA / FRESH BEEF	44.172	15.994	2.762	41.508	13.736	3.022	6%	16%	-9%
INDUSTRIALIZADAS / PROCES...	20.224	9.488	2.132	28.805	12.280	2.346	-30%	-23%	-9%
TRIPAS / CASINGS	2.021	1.363	1.483	2.838	1.555	1.825	-29%	-12%	-19%
MIÚDOS / OFFALS	2.475	2.357	1.050	1.929	1.710	1.128	28%	38%	-7%
SALGADAS / SALTED	59	18	3.305	248	93	2.681	-76%	-81%	23%
	<b>68.950</b>	<b>29.219</b>	<b>2.360</b>	<b>75.328</b>	<b>29.373</b>	<b>2.564</b>	<b>-8%</b>	<b>-1%</b>	<b>-8%</b>

**2000** **1999** **%(2000x1999)**

Dezembro / December	US\$ (000)	TONNES	US\$/Ton	US\$ (000)	TONNES	US\$/Ton	US\$ (000)	TONNES	US\$/Ton
IN NATURA / FRESH BEEF	36.684	15.085	2.432	39.644	13.651	2.904	-7%	10%	-16%
INDUSTRIALIZADAS / PROCES...	22.485	10.144	2.217	28.061	12.458	2.253	-20%	-19%	-2%
TRIPAS / CASINGS	1.981	1.174	1.688	2.319	1.441	1.609	-15%	-19%	5%
MIÚDOS / OFFALS	1.446	1.595	907	2.169	1.988	1.091	-33%	-20%	-17%
SALGADAS / SALTED	1.067	461	2.313	988	364	2.715	8%	27%	-15%
	<b>63.663</b>	<b>28.458</b>	<b>2.237</b>	<b>73.180</b>	<b>29.901</b>	<b>2.447</b>	<b>-13%</b>	<b>-5%</b>	<b>-9%</b>

**EVOLUÇÃO DAS EXPORTAÇÕES DE CARNE BOVINA DO BRASIL  
 BRAZILIAN BEEF EXPORTS**



**jan 2000 - dez 2000**

Mes / Month	jan	fev	mar	abr	mai	jun	jul	ago	set	out	nov	dez
US\$ (000)	54.873	61.265	67.536	69.860	83.732	84.326	80.837	75.689	63.084	63.449	68.950	63.663
TONNES	24.031	26.019	28.177	29.044	35.400	36.823	34.727	32.607	26.914	27.280	29.219	28.458
US\$/Ton	2.283	2.355	2.397	2.405	2.365	2.290	2.328	2.321	2.344	2.326	2.360	2.237

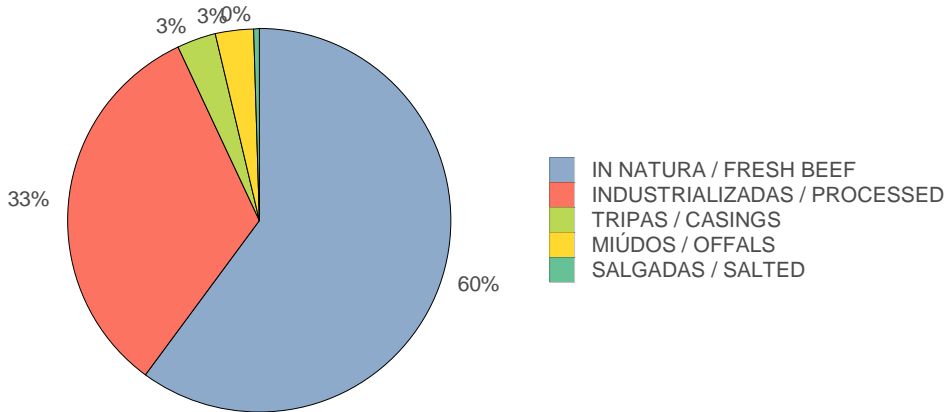


**Exportações Brasileiras de Carne Bovina  
Brazilian Beef Exports  
Fonte / Source: SECEX-MDIC**

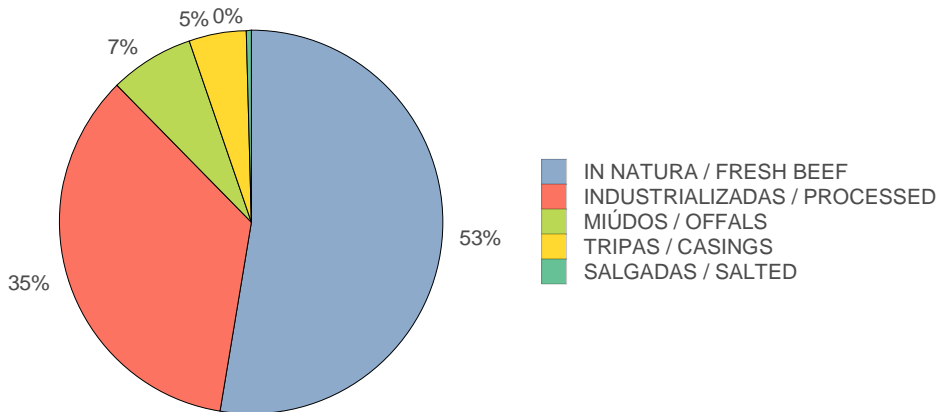
Produto / Product	jan 2000 - dez 2000			jan 1999 - dez 1999			% (2000x1999)		
	US\$ (000)	TONNES	US\$/Ton	US\$ (000)	TONNES	US\$/Ton	US\$ (000)	TONNES	US\$/Ton
IN NATURA / FRESH BEEF	503.299	188.656	2.688	443.838	150.765	2.944	13%	25%	-9%
INDUSTRIALIZADAS / PROCESSED	275.576	125.698	2.192	360.375	140.838	2.559	-24%	-11%	-14%
TRIPAS / CASINGS	27.523	17.350	1.586	31.510	16.058	1.962	-13%	8%	-19%
MIÚDOS / OFFALS	26.867	25.425	1.057	18.093	17.231	1.050	48%	48%	1%
SALGADAS / SALTED	3.998	1.570	2.546	3.757	1.431	2.625	6%	10%	-3%
	<b>837.264</b>	<b>358.699</b>	<b>2.334</b>	<b>857.573</b>	<b>326.323</b>	<b>2.628</b>	<b>-2%</b>	<b>10%</b>	<b>-11%</b>

**EXPORTAÇÕES DE CARNE BOVINA DO BRASIL POR PRODUTOS  
BRAZILIAN BEEF EXPORTS PER PRODUCTS**

**US\$**



**TON**





**Exportações Brasileiras de Carne Bovina**  
**Brazilian Beef Exports**  
**Fonte / Source: SECEX-MDIC**  
**IN NATURA / FRESH BEEF**

Destino / Country	ian 2000 - dez 2000			ian 1999 - dez 1999			%(2000x1999)		
	US\$ (000)	TONNES	US\$/Ton	US\$ (000)	TONNES	US\$/Ton	US\$ (000)	TONNES	US\$/Ton
NETHERLANDS	98.380	25.667	3.833	117.303	29.395	3.991	-16%	-13%	-4%
ITALY	60.106	20.936	2.871	60.058	19.792	3.035	0%	6%	-5%
SPAIN	54.094	15.222	3.554	50.042	12.996	3.851	8%	17%	-8%
CHILE	53.784	31.654	1.699	32.050	18.870	1.698	68%	68%	0%
UNITED KINGDOM	49.315	18.612	2.650	36.190	12.621	2.868	36%	47%	-8%
GERMANY	37.792	9.876	3.826	28.733	7.297	3.938	32%	35%	-3%
HONG KONG	23.064	11.230	2.054	27.428	12.801	2.143	-16%	-12%	-4%
ISRAEL	21.487	12.436	1.728	10.356	5.704	1.816	107%	118%	-5%
SWITZERLAND	20.519	5.392	3.806	14.056	3.511	4.003	46%	54%	-5%
LEBANON	12.141	4.327	2.806	7.845	2.843	2.760	55%	52%	2%
SINGAPORE	9.924	6.254	1.587	9.486	6.237	1.521	5%	0%	4%
PORTUGAL	9.243	2.807	3.293	9.755	2.740	3.560	-5%	2%	-7%
FRANCE	6.925	2.025	3.420	3.663	1.345	2.723	89%	51%	26%
SWEDEN	5.684	1.118	5.084	923	177	5.210	516%	531%	-2%
GREECE	4.802	1.844	2.604	4.205	1.382	3.044	14%	33%	-14%
SAUDI ARABIA	4.412	2.345	1.881	4.480	1.906	2.350	-2%	23%	-20%
FINLAND	4.308	729	5.912	4.728	772	6.124	-9%	-6%	-3%
EGYPT	3.109	2.392	1.300	632	277	2.279	392%	762%	-43%
NETHERLANDS ANTILLES	3.080	1.533	2.009	3.184	1.411	2.256	-3%	9%	-11%
IRAN	2.519	1.580	1.594	8.369	5.249	1.594	-70%	-70%	-0%
ANGOLA	2.257	895	2.521	715	309	2.311	216%	189%	9%
IRELAND	2.091	1.153	1.814	821	295	2.783	155%	291%	-35%
UNITED ARAB EMIRATES	1.945	679	2.865	1.596	270	5.917	22%	152%	-52%
BULGARIA	1.900	1.991	954	0	0	-	-	-	-
LITHUANIA	1.382	1.621	852	0	0	-	-	-	-
NORWAY	1.257	261	4.823	214	25	8.483	487%	933%	-43%
BELGIUM	1.256	252	4.986	1.807	357	5.063	-31%	-29%	-2%
PERU	1.207	808	1.495	1.137	733	1.551	6%	10%	-4%
PHILIPPINES	1.177	990	1.188	53	25	2.135	2.125%	3.899%	-44%
ARUBA	478	216	2.210	448	180	2.496	7%	20%	-11%
BAHREIN	414	175	2.373	451	208	2.163	-8%	-16%	10%
DENMARK	327	83	3.923	110	24	4.606	198%	250%	-15%
ARGENTINA	321	164	1.957	639	289	2.208	-50%	-43%	-11%
CHINA	312	373	836	29	15	1.894	994%	2.379%	-56%
SENEGAL	293	153	1.914	59	46	1.299	394%	235%	47%
MAURITIUS	277	99	2.795	0	0	-	-	-	-
URUGUAY	238	84	2.822	31	45	694	667%	89%	306%
SOUTH AFRICA	203	149	1.364	66	42	1.555	209%	252%	-12%
JORDAN	154	38	4.056	69	24	2.826	123%	56%	44%
KUWAIT	140	39	3.586	164	58	2.822	-15%	-33%	27%
CANARY, ISLANDS	134	43	3.118	514	110	4.669	-74%	-61%	-33%
UNITED STATES	120	23	5.285	19	16	1.174	538%	42%	350%
MADEIRA	116	35	3.332	0	0	-	-	-	-
GABON	97	39	2.480	276	87	3.164	-65%	-55%	-22%
<b>TOTAL</b>	<b>503.299</b>	<b>188.656</b>	<b>2.668</b>	<b>443.838</b>	<b>150.765</b>	<b>2.944</b>	<b>13%</b>	<b>25%</b>	<b>-9%</b>



Exportações Brasileiras de Carne Bovina  
 Brazilian Beef Exports  
 Fonte / Source: SECEX-MDIC  
**IN NATURA / FRESH BEEF**

ian 2000 - dez 2000

ian 1999 - dez 1999

%(2000x1999)

Destino / Country	US\$ (000)	TONNES	US\$/Ton	US\$ (000)	TONNES	US\$/Ton	US\$ (000)	TONNES	US\$/Ton
MOROCCO	72	11	6.454	0	0	-	-	-	-
ROMANIA	66	73	900	0	0	-	-	-	-
MARTINIQUE	63	16	4.032	80	17	4.698	-22%	-9%	-14%
CONGO	54	30	1.811	108	54	1.988	-50%	-45%	-9%
OMAN	50	12	4.126	0	0	-	-	-	-
CANADA	48	24	2.000	0	0	-	-	-	-
BOSNIA AND HERZEGOVINA	37	46	797	0	0	-	-	-	-
JAPAN	32	30	1.041	0	0	-	-	-	-
MALAYSIA	27	24	1.137	0	0	-	-	-	-
COMOROS	24	17	1.371	0	0	-	-	-	-
GUADELOUPE	24	12	1.975	99	40	2.481	-76%	-70%	-20%
ALBANIA	21	21	974	0	0	-	-	-	-
PARAGUAY	0	0	-	0	0	397	-100%	-100%	-
MONACO	0	0	-	149	49	3.015	-100%	-100%	-
AUSTRIA	0	0	-	697	120	5.830	-100%	-100%	-
	<b>503.299</b>	<b>188.656</b>	<b>2.668</b>	<b>443.838</b>	<b>150.765</b>	<b>2.944</b>	<b>13%</b>	<b>25%</b>	<b>-9%</b>



Exportações Brasileiras de Carne Bovina  
Brazilian Beef Exports  
Fonte / Source: SECEX-MDIC  
**INDUSTRIALIZADAS / PROCESSED**

Destino / Country	ian 2000 - dez 2000			ian 1999 - dez 1999			% (2000x1999)		
	US\$ (000)	TONNES	US\$/Ton	US\$ (000)	TONNES	US\$/Ton	US\$ (000)	TONNES	US\$/Ton
UNITED KINGDOM	92.041	48.404	1.902	108.343	50.439	2.148	-15%	-4%	-11%
UNITED STATES	82.051	37.625	2.181	113.286	47.399	2.390	-28%	-21%	-9%
GERMANY	13.696	4.165	3.288	22.286	4.883	4.564	-39%	-15%	-28%
NETHERLANDS	13.015	3.643	3.572	18.585	3.832	4.849	-30%	-5%	-26%
ITALY	11.405	2.829	4.031	16.314	3.674	4.440	-30%	-23%	-9%
FRANCE	9.911	3.630	2.731	12.328	3.899	3.162	-20%	-7%	-14%
PUERTO RICO	6.563	3.800	1.727	8.328	4.171	1.997	-21%	-9%	-14%
CANADA	5.562	2.958	1.881	6.205	2.972	2.087	-10%	-0%	-10%
JAPAN	5.480	1.606	3.413	9.760	1.511	6.458	-44%	6%	-47%
JAMAICA	4.939	2.873	1.719	9.104	4.227	2.154	-46%	-32%	-20%
BELGIUM	3.618	1.251	2.892	2.714	794	3.420	33%	58%	-15%
EGYPT	2.755	1.423	1.936	2.028	923	2.196	36%	54%	-12%
SWEDEN	1.707	556	3.072	2.221	617	3.597	-23%	-10%	-15%
JORDAN	1.619	906	1.788	1.658	851	1.950	-2%	6%	-8%
PHILIPPINES	1.549	904	1.713	1.582	725	2.181	-2%	25%	-21%
SAUDI ARABIA	1.424	795	1.790	2.075	1.012	2.051	-31%	-21%	-13%
SWITZERLAND	1.382	178	7.772	2.385	248	9.620	-42%	-28%	-19%
TRINIDAD AND TOBAGO	1.280	785	1.631	1.945	1.004	1.937	-34%	-22%	-16%
MALTA	1.252	677	1.849	1.651	775	2.130	-24%	-13%	-13%
IRELAND	1.251	443	2.823	116	23	5.012	978%	1.815%	-44%
SPAIN	1.227	431	2.847	1.385	415	3.336	-11%	4%	-15%
BAHAMAS	1.122	686	1.636	1.259	676	1.862	-11%	1%	-12%
PARAGUAY	732	484	1.511	403	305	1.320	82%	59%	14%
BARBADOS	725	432	1.679	1.145	584	1.962	-37%	-26%	-14%
CHILE	671	54	12.307	684	47	14.702	-2%	17%	-16%
UNITED ARAB EMIRATES	580	297	1.957	572	273	2.094	1%	9%	-7%
NORWAY	569	92	6.199	1.291	138	9.348	-56%	-34%	-34%
NETHERLANDS ANTILLES	555	294	1.887	462	217	2.126	20%	35%	-11%
LEBANON	452	250	1.808	656	305	2.152	-31%	-18%	-16%
GREECE	357	95	3.766	728	115	6.304	-51%	-18%	-40%
SINGAPORE	339	187	1.810	376	187	2.009	-10%	0%	-10%
SOUTH KOREA	327	216	1.514	316	262	1.208	4%	-17%	25%
ISRAEL	287	165	1.739	315	152	2.072	-9%	8%	-16%
BELIZE	275	154	1.779	282	137	2.059	-3%	13%	-14%
PANAMA	274	165	1.662	105	54	1.953	161%	207%	-15%
ANTIGUA AND BARBUDA	269	143	1.877	360	173	2.076	-25%	-17%	-10%
PORTUGAL	232	16	14.655	740	55	13.498	-69%	-71%	9%
AUSTRALIA	213	48	4.386	0	0	-	-	-	-
CYPRUS	209	118	1.767	131	64	2.040	60%	84%	-13%
GHANA	186	103	1.812	507	257	1.976	-63%	-60%	-8%
SAINT LUCIA	185	96	1.920	158	80	1.987	17%	21%	-3%
KUWAIT	184	98	1.872	12	5	2.435	1.428%	1.887%	-23%
SAINT VICENT AND THE GRANADINES	182	98	1.860	227	101	2.249	-20%	-3%	-17%
DOMINICA ISLAND	170	95	1.787	122	59	2.079	39%	62%	-14%
	<b>275.576</b>	<b>125.698</b>	<b>2.192</b>	<b>360.375</b>	<b>140.838</b>	<b>2.559</b>	<b>-24%</b>	<b>-11%</b>	<b>-14%</b>





Exportações Brasileiras de Carne Bovina  
Brazilian Beef Exports  
Fonte / Source: SECEX-MDIC  
**INDUSTRIALIZADAS / PROCESSED**

Destino / Country	ian 2000 - dez 2000			ian 1999 - dez 1999			%(2000x1999)		
	US\$ (000)	TONNES	US\$/Ton	US\$ (000)	TONNES	US\$/Ton	US\$ (000)	TONNES	US\$/Ton
AUSTRIA	142	50	2.841	185	37	4.941	-23%	33%	-43%
OMAN	139	82	1.701	44	20	2.198	217%	310%	-23%
HONG KONG	137	80	1.713	254	122	2.088	-46%	-34%	-18%
PERU	134	12	11.162	38	48	800	253%	-75%	1.295%
QATAR	132	57	2.326	173	76	2.278	-24%	-26%	2%
GRENADA	127	73	1.738	65	33	1.940	97%	120%	-10%
URUGUAY	127	53	2.389	628	102	6.133	-80%	-48%	-61%
NIGERIA	119	71	1.673	0	0	-	-	-	-
MONACO	104	57	1.828	0	0	-	-	-	-
BAHREIN	100	47	2.142	91	41	2.210	10%	14%	-3%
CAYMAN ISLANDS	91	54	1.672	118	56	2.098	-23%	-3%	-20%
INDONESIA	88	51	1.702	32	17	1.838	178%	200%	-7%
CONGO	79	35	2.243	0	0	-	-	-	-
SLOVENIA	78	7	11.061	121	13	9.300	-36%	-46%	19%
COLOMBIA	77	22	3.461	88	6	15.233	-12%	287%	-77%
BENIN	66	34	1.944	0	0	-	-	-	-
VIRGIN ISLANDS (UK)	66	36	1.836	68	31	2.196	-3%	16%	-16%
CHINA	64	86	753	119	80	1.481	-46%	7%	-49%
SEYCHELLES	64	34	1.866	163	69	2.375	-61%	-50%	-21%
GIBRALTAR	62	34	1.819	135	70	1.921	-54%	-52%	-5%
SURINAME	61	38	1.626	42	19	2.167	47%	96%	-25%
GUAM	59	34	1.728	504	257	1.965	-88%	-87%	-12%
PACIFIC ISLANDS (USA)	54	31	1.773	0	0	-	-	-	-
VENEZUELA	54	33	1.654	0	0	-	-	-	-
FINLAND	41	19	2.150	0	0	-	-	-	-
ARGENTINA	38	21	1.767	364	187	1.948	-90%	-89%	-9%
SOUTH AFRICA	38	19	2.016	77	37	2.108	-51%	-49%	-4%
TAIWAN	35	31	1.103	0	0	-	-	-	-
MALAYSIA	34	20	1.728	0	0	-	-	-	-
BERMUDA	33	19	1.714	79	38	2.056	-59%	-50%	-17%
ALGERIA	31	16	2.003	0	0	-	-	-	-
GAMBIA	30	17	1.806	0	0	1.669	14.953%	13.816%	8%
DENMARK	29	17	1.716	131	52	2.514	-78%	-67%	-32%
NEW ZEALAND	29	17	1.673	29	17	1.667	0%	0%	0%
KENYA	28	17	1.654	0	0	-	-	-	-
VIRGIN ISLANDS (USA)	28	17	1.654	171	82	2.073	-83%	-79%	-20%
ARUBA	28	15	1.820	74	31	2.405	-62%	-50%	-24%
BOLIVIA	27	34	802	88	67	1.299	-69%	-50%	-38%
GUYANA	26	17	1.532	0	0	-	-	-	-
ANGOLA	20	13	1.544	14	4	3.535	38%	215%	-56%
THAILAND	13	1	10.654	0	0	-	-	-	-
MOROCCO	12	1	12.141	0	0	-	-	-	-
ANGUILLA	5	3	1.654	7	3	2.083	-21%	0%	-21%
TURKS AND CAICOS, ISLANDS	2	1	1.859	3	2	2.083	-29%	-21%	-11%
<b>TOTAL</b>	<b>275.576</b>	<b>125.698</b>	<b>2.192</b>	<b>360.375</b>	<b>140.838</b>	<b>2.559</b>	<b>-24%</b>	<b>-11%</b>	<b>-14%</b>



Exportações Brasileiras de Carne Bovina  
 Brazilian Beef Exports  
 Fonte / Source: SECEX-MDIC  
**INDUSTRIALIZADAS / PROCESSED**

Destino / Country	ian 2000 - dez 2000			ian 1999 - dez 1999			% (2000x1999)		
	US\$ (000)	TONNES	US\$/Ton	US\$ (000)	TONNES	US\$/Ton	US\$ (000)	TONNES	US\$/Ton
ALBANIA	0	0	1.670	0	0	-	-	-	-
TURKEY	0	0	-	92	6	14.393	-100%	-100%	-
GABON	0	0	-	141	53	2.660	-100%	-100%	-
CAPE VERDE	0	0	-	1	1	1.567	-100%	-100%	-
COMOROS	0	0	-	970	463	2.095	-100%	-100%	-
FRENCH GUYANA	0	0	-	115	55	2.079	-100%	-100%	-
	<b>275.576</b>	<b>125.698</b>	<b>2.192</b>	<b>360.375</b>	<b>140.838</b>	<b>2.559</b>	<b>-24%</b>	<b>-11%</b>	<b>-14%</b>



Exportações Brasileiras de Carne Bovina  
 Brazilian Beef Exports  
 Fonte / Source: SECEX-MDIC  
 MIÚDOS / OFFALS

Destino / Country	ian 2000 - dez 2000			ian 1999 - dez 1999			% (2000x1999)		
	US\$ (000)	TONNES	US\$/Ton	US\$ (000)	TONNES	US\$/Ton	US\$ (000)	TONNES	US\$/Ton
HONG KONG	17.946	17.284	1.038	12.630	12.160	1.039	42%	42%	-0%
ISRAEL	1.692	1.001	1.690	957	528	1.814	77%	90%	-7%
NETHERLANDS	1.010	877	1.152	355	296	1.200	184%	196%	-4%
PERU	998	1.635	610	580	960	604	72%	70%	1%
ITALY	759	693	1.094	134	117	1.143	465%	490%	-4%
SWITZERLAND	562	360	1.562	765	603	1.269	-27%	-40%	23%
JAPAN	491	277	1.771	724	418	1.731	-32%	-34%	2%
FRANCE	471	212	2.219	450	272	1.654	5%	-22%	34%
SAUDI ARABIA	314	144	2.180	464	267	1.739	-32%	-46%	25%
CONGO	310	823	376	163	402	405	90%	105%	-7%
BULGARIA	218	157	1.390	0	0	-	-	-	-
PHILIPPINES	199	117	1.706	0	0	-	-	-	-
SPAIN	192	184	1.040	53	55	960	260%	232%	8%
GERMANY	181	114	1.590	20	17	1.184	787%	561%	34%
CHINA	180	173	1.046	82	52	1.583	120%	234%	-34%
LEBANON	169	173	974	154	168	917	9%	3%	6%
UNITED ARAB EMIRATES	156	95	1.644	28	21	1.341	461%	358%	23%
NETHERLANDS ANTILLES	116	81	1.435	66	55	1.197	76%	47%	20%
ANGOLA	109	90	1.214	48	35	1.350	129%	154%	-10%
ARGENTINA	108	90	1.207	14	24	585	662%	269%	106%
CANADA	101	24	4.212	0	0	-	-	-	-
GABON	95	196	488	191	479	397	-50%	-59%	23%
DENMARK	79	82	957	31	32	971	150%	154%	-1%
BELGIUM	76	36	2.121	42	30	1.383	83%	19%	53%
COTE D'IVORE	48	138	347	0	0	-	-	-	-
UNITED KINGDOM	48	116	412	0	0	-	-	-	-
GREECE	37	25	1.504	0	0	-	-	-	-
MEXICO	34	25	1.400	0	0	-	-	-	-
LITHUANIA	29	16	1.807	0	0	-	-	-	-
POLAND	22	24	927	0	0	-	-	-	-
ARUBA	22	13	1.670	6	6	1.112	238%	125%	50%
ROMANIA	21	24	881	0	0	-	-	-	-
PORTUGAL	21	71	297	10	5	1.900	102%	1.193%	-84%
KUWAIT	19	10	1.800	4	2	1.750	401%	387%	3%
GUATEMALA	19	13	1.400	0	0	-	-	-	-
COMOROS	6	13	441	0	0	-	-	-	-
SOUTH AFRICA	5	13	350	52	124	420	-91%	-90%	-17%
CANARY, ISLANDS	3	2	1.600	0	0	-	-	-	-
DEMOCRATIC REPUBLIC OF THE C...	2	5	370	21	50	421	-91%	-90%	-12%
OMAN	2	1	1.760	0	0	-	-	-	-
URUGUAY	0	0	-	2	2	1.100	-100%	-100%	-
UNITED STATES	0	0	-	21	23	879	-100%	-100%	-
CHILE	0	0	-	21	23	910	-100%	-100%	-
BAHREIN	0	0	-	3	2	1.658	-100%	-100%	-
	<b>26.867</b>	<b>25.425</b>	<b>1.057</b>	<b>18.093</b>	<b>17.231</b>	<b>1.050</b>	<b>48%</b>	<b>48%</b>	<b>1%</b>



Exportações Brasileiras de Carne Bovina  
 Brazilian Beef Exports  
 Fonte / Source: SECEX-MDIC  
**SALGADAS / SALTED**

Destino / Country	ian 2000 - dez 2000			ian 1999 - dez 1999			% (2000x1999)		
	US\$ (000)	TONNES	US\$/Ton	US\$ (000)	TONNES	US\$/Ton	US\$ (000)	TONNES	US\$/Ton
ANGOLA	3.714	1.501	2.475	3.558	1.377	2.583	4%	9%	-4%
UNITED STATES	232	56	4.119	148	34	4.390	57%	67%	-6%
PUERTO RICO	48	11	4.224	0	0	-	-	-	-
CAPE VERDE	4	2	2.550	0	0	-	-	-	-
PARAGUAY	0	0	2.200	1	1	1.105	-86%	-93%	99%
NAMIBIA	0	0	-	41	15	2.700	-100%	-100%	-
BOLIVIA	0	0	-	10	5	2.091	-100%	-100%	-
	<b>3.998</b>	<b>1.570</b>	<b>2.546</b>	<b>3.757</b>	<b>1.431</b>	<b>2.625</b>	<b>6%</b>	<b>10%</b>	<b>-3%</b>



Exportações Brasileiras de Carne Bovina  
 Brazilian Beef Exports  
 Fonte / Source: SECEX-MDIC  
**TRIPAS / CASINGS**

Destino / Country	ian 2000 - dez 2000			ian 1999 - dez 1999			% (2000x1999)		
	US\$ (000)	TONNES	US\$/Ton	US\$ (000)	TONNES	US\$/Ton	US\$ (000)	TONNES	US\$/Ton
GERMANY	7.159	4.044	1.770	8.321	4.145	2.008	-14%	-2%	-12%
SPAIN	4.544	2.375	1.913	5.329	2.578	2.067	-15%	-8%	-7%
ITALY	4.029	2.578	1.563	6.065	2.530	2.397	-34%	2%	-35%
SWITZERLAND	2.839	1.303	2.178	2.743	1.114	2.463	4%	17%	-12%
HONG KONG	1.726	1.618	1.066	197	207	950	777%	682%	12%
NETHERLANDS	1.365	770	1.772	1.022	562	1.820	34%	37%	-3%
PORTUGAL	1.058	613	1.726	808	455	1.777	31%	35%	-3%
UNITED STATES	1.041	373	2.795	1.536	422	3.640	-32%	-12%	-23%
FRANCE	744	318	2.342	1.377	471	2.922	-46%	-33%	-20%
AUSTRIA	672	318	2.116	476	190	2.506	41%	67%	-16%
BELGIUM	623	475	1.312	1.043	613	1.703	-40%	-22%	-23%
PARAGUAY	532	774	687	817	1.266	646	-35%	-39%	6%
ARGENTINA	321	356	902	412	466	884	-22%	-23%	2%
SOUTH AFRICA	192	100	1.925	38	20	1.921	406%	405%	0%
URUGUAY	165	807	205	206	513	403	-20%	57%	-49%
SWEDEN	161	158	1.020	234	99	2.367	-31%	60%	-57%
NORWAY	144	273	528	396	345	1.147	-64%	-21%	-54%
DENMARK	90	40	2.281	0	0	-	-	-	-
MEXICO	42	3	14.413	402	16	24.422	-90%	-82%	-41%
CHILE	34	36	946	17	12	1.423	96%	194%	-34%
VENEZUELA	30	12	2.437	16	7	2.423	89%	88%	1%
FINLAND	8	3	2.667	0	0	-	-	-	-
ANGOLA	1	1	1.000	0	0	-	-	-	-
PERU	0	0	-	46	5	8.879	-100%	-100%	-
EGYPT	0	0	-	8	24	339	-100%	-100%	-
	<b>27.523</b>	<b>17.350</b>	<b>1.586</b>	<b>31.510</b>	<b>16.058</b>	<b>1.962</b>	<b>-13%</b>	<b>8%</b>	<b>-19%</b>



**Exportações Brasileiras de Carne Bovina**  
**Brazilian Beef Exports**  
**Fonte / Source: SECEX-MDIC**  
**TOTAL POR PAÍS / TOTAL PER COUNTRY**

Destino / Country	ian 2000 - dez 2000			ian 1999 - dez 1999			% (2000x1999)		
	US\$ (000)	TONNES	US\$/Ton	US\$ (000)	TONNES	US\$/Ton	US\$ (000)	TONNES	US\$/Ton
UNITED KINGDOM	141.404	67.131	2.106	144.533	63.060	2.292	-2%	6%	-8%
NETHERLANDS	113.771	30.957	3.675	137.265	34.085	4.027	-17%	-9%	-9%
UNITED STATES	83.445	38.077	2.191	115.010	47.894	2.401	-27%	-20%	-9%
ITALY	76.298	27.037	2.822	82.571	26.113	3.162	-8%	4%	-11%
SPAIN	60.058	18.212	3.298	56.810	16.045	3.541	6%	14%	-7%
GERMANY	58.828	18.199	3.232	59.360	16.342	3.632	-1%	11%	-11%
CHILE	54.488	31.744	1.716	32.772	18.952	1.729	66%	67%	-1%
HONG KONG	42.872	30.212	1.419	40.509	25.290	1.602	6%	19%	-11%
SWITZERLAND	25.301	7.233	3.498	19.949	5.475	3.643	27%	32%	-4%
ISRAEL	23.466	13.602	1.725	11.628	6.383	1.822	102%	113%	-5%
FRANCE	18.051	6.184	2.919	17.819	5.988	2.976	1%	3%	-2%
LEBANON	12.762	4.751	2.686	8.655	3.316	2.610	47%	43%	3%
PORTUGAL	10.554	3.506	3.010	11.314	3.255	3.476	-7%	8%	-13%
SINGAPORE	10.263	6.441	1.593	9.862	6.424	1.535	4%	0%	4%
SWEDEN	7.553	1.832	4.123	3.378	893	3.781	124%	105%	9%
PUERTO RICO	6.611	3.812	1.734	8.328	4.171	1.997	-21%	-9%	-13%
SAUDI ARABIA	6.150	3.284	1.872	7.019	3.185	2.204	-12%	3%	-15%
ANGOLA	6.101	2.500	2.440	4.335	1.726	2.511	41%	45%	-3%
JAPAN	6.003	1.914	3.137	10.485	1.930	5.434	-43%	-1%	-42%
EGYPT	5.863	3.815	1.537	2.668	1.225	2.179	120%	211%	-29%
CANADA	5.712	3.006	1.900	6.205	2.972	2.087	-8%	1%	-9%
BELGIUM	5.573	2.013	2.768	5.606	1.793	3.126	-1%	12%	-11%
GREECE	5.196	1.964	2.646	4.933	1.497	3.295	5%	31%	-20%
JAMAICA	4.939	2.873	1.719	9.104	4.227	2.154	-46%	-32%	-20%
FINLAND	4.358	751	5.804	4.728	772	6.124	-8%	-3%	-5%
NETHERLANDS ANTILLES	3.751	1.908	1.966	3.712	1.683	2.205	1%	13%	-11%
IRELAND	3.343	1.596	2.094	937	318	2.945	257%	402%	-29%
PHILIPPINES	2.925	2.012	1.454	1.635	750	2.180	79%	168%	-33%
UNITED ARAB EMIRATES	2.681	1.070	2.505	2.196	564	3.896	22%	90%	-36%
IRAN	2.519	1.580	1.594	8.369	5.249	1.594	-70%	-70%	-0%
PERU	2.339	2.455	953	1.802	1.746	1.032	30%	41%	-8%
BULGARIA	2.118	2.148	986	0	0	-	-	-	-
NORWAY	1.970	626	3.149	1.901	509	3.738	4%	23%	-16%
JORDAN	1.773	944	1.879	1.727	875	1.974	3%	8%	-5%
LITHUANIA	1.411	1.637	862	0	0	-	-	-	-
TRINIDAD AND TOBAGO	1.280	785	1.631	1.945	1.004	1.937	-34%	-22%	-16%
PARAGUAY	1.264	1.258	1.004	1.220	1.572	777	4%	-20%	29%
MALTA	1.252	677	1.849	1.651	775	2.130	-24%	-13%	-13%
BAHAMAS	1.122	686	1.636	1.259	676	1.862	-11%	1%	-12%
AUSTRIA	814	368	2.214	1.358	347	3.913	-40%	6%	-43%
ARGENTINA	788	631	1.248	1.429	966	1.479	-45%	-35%	-16%
BARBADOS	725	432	1.679	1.145	584	1.962	-37%	-26%	-14%
CHINA	557	631	882	229	147	1.559	143%	329%	-43%
URUGUAY	530	945	561	868	662	1.312	-39%	43%	-57%
<b>TOTAL</b>	<b>837.264</b>	<b>358.699</b>	<b>2.334</b>	<b>857.573</b>	<b>326.323</b>	<b>2.628</b>	<b>-2%</b>	<b>10%</b>	<b>-11%</b>



**Exportações Brasileiras de Carne Bovina**  
**Brazilian Beef Exports**  
**Fonte / Source: SECEX-MDIC**  
**TOTAL POR PAÍS / TOTAL PER COUNTRY**

Destino / Country	ian 2000 - dez 2000			ian 1999 - dez 1999			% (2000x1999)		
	US\$ (000)	TONNES	US\$/Ton	US\$ (000)	TONNES	US\$/Ton	US\$ (000)	TONNES	US\$/Ton
ARUBA	528	245	2.157	529	216	2.446	-0%	13%	-12%
DENMARK	526	222	2.364	272	108	2.513	93%	105%	-6%
BAHREIN	514	221	2.324	545	251	2.167	-6%	-12%	7%
CONGO	443	888	498	271	456	593	63%	95%	-16%
SOUTH AFRICA	438	281	1.560	233	222	1.046	88%	26%	49%
KUWAIT	343	148	2.320	180	65	2.757	91%	127%	-16%
SOUTH KOREA	327	216	1.514	316	262	1.208	4%	-17%	25%
SENEGAL	293	153	1.914	59	46	1.299	394%	235%	47%
MAURITIUS	277	99	2.795	0	0	-	-	-	-
BELIZE	275	154	1.779	282	137	2.059	-3%	13%	-14%
PANAMA	274	165	1.662	105	54	1.953	161%	207%	-15%
ANTIGUA AND BARBUDA	269	143	1.877	360	173	2.076	-25%	-17%	-10%
AUSTRALIA	213	48	4.386	0	0	-	-	-	-
CYPRUS	209	118	1.767	131	64	2.040	60%	84%	-13%
GABON	192	234	819	608	620	981	-68%	-62%	-17%
OMAN	191	95	2.012	44	20	2.198	336%	376%	-8%
GHANA	186	103	1.812	507	257	1.976	-63%	-60%	-8%
SAINT LUCIA	185	96	1.920	158	80	1.987	17%	21%	-3%
SAINT VICENT AND THE GRANADINES	182	98	1.860	227	101	2.249	-20%	-3%	-17%
DOMINICA ISLAND	170	95	1.787	122	59	2.079	39%	62%	-14%
CANARY, ISLANDS	137	45	3.049	514	110	4.669	-73%	-59%	-35%
QATAR	132	57	2.326	173	76	2.278	-24%	-26%	2%
GRENADA	127	73	1.738	65	33	1.940	97%	120%	-10%
NIGERIA	119	71	1.673	0	0	-	-	-	-
MADEIRA	116	35	3.332	0	0	-	-	-	-
MONACO	104	57	1.828	149	49	3.015	-30%	15%	-39%
CAYMAN ISLANDS	91	54	1.672	118	56	2.098	-23%	-3%	-20%
INDONESIA	88	51	1.702	32	17	1.838	178%	200%	-7%
ROMANIA	87	97	895	0	0	-	-	-	-
MOROCCO	84	12	6.914	0	0	-	-	-	-
VENEZUELA	84	45	1.868	16	7	2.423	432%	590%	-23%
SLOVENIA	78	7	11.061	121	13	9.300	-36%	-46%	19%
COLOMBIA	77	22	3.461	88	6	15.233	-12%	287%	-77%
MEXICO	76	27	2.779	402	16	24.422	-81%	67%	-89%
BENIN	66	34	1.944	0	0	-	-	-	-
VIRGIN ISLANDS (UK)	66	36	1.836	68	31	2.196	-3%	16%	-16%
SEYCHELLES	64	34	1.866	163	69	2.375	-61%	-50%	-21%
MARTINIQUE	63	16	4.032	80	17	4.698	-22%	-9%	-14%
GIBRALTAR	62	34	1.819	135	70	1.921	-54%	-52%	-5%
SURINAME	61	38	1.626	42	19	2.167	47%	96%	-25%
MALAYSIA	61	43	1.403	0	0	-	-	-	-
GUAM	59	34	1.728	504	257	1.965	-88%	-87%	-12%
PACIFIC ISLANDS (USA)	54	31	1.773	0	0	-	-	-	-
COTE D'IVOIRE	48	138	347	0	0	-	-	-	-
<b>TOTAL</b>	<b>837.264</b>	<b>358.699</b>	<b>2.334</b>	<b>857.573</b>	<b>326.323</b>	<b>2.628</b>	<b>-2%</b>	<b>10%</b>	<b>-11%</b>



**Exportações Brasileiras de Carne Bovina**  
**Brazilian Beef Exports**  
 Fonte / Source: SECEX-MDIC  
**TOTAL POR PAÍS / TOTAL PER COUNTRY**

Destino / Country	ian 2000 - dez 2000			ian 1999 - dez 1999			% (2000x1999)		
	US\$ (000)	TONNES	US\$/Ton	US\$ (000)	TONNES	US\$/Ton	US\$ (000)	TONNES	US\$/Ton
BOSNIA AND HERZEGOVINA	37	46	797	0	0	-	-	-	-
TAIWAN	35	31	1.103	0	0	-	-	-	-
BERMUDA	33	19	1.714	79	38	2.056	-59%	-50%	-17%
ALGERIA	31	16	2.003	0	0	-	-	-	-
GAMBIA	30	17	1.806	0	0	1.669	14.953%	13.816%	8%
COMOROS	29	30	978	970	463	2.095	-97%	-94%	-53%
NEW ZEALAND	29	17	1.673	29	17	1.667	0%	0%	0%
KENYA	28	17	1.654	0	0	-	-	-	-
VIRGIN ISLANDS (USA)	28	17	1.654	171	82	2.073	-83%	-79%	-20%
BOLIVIA	27	34	802	98	72	1.353	-72%	-53%	-41%
GUYANA	26	17	1.532	0	0	-	-	-	-
GUADELOUPE	24	12	1.975	99	40	2.481	-76%	-70%	-20%
POLAND	22	24	927	0	0	-	-	-	-
ALBANIA	21	21	977	0	0	-	-	-	-
GUATEMALA	19	13	1.400	0	0	-	-	-	-
THAILAND	13	1	10.654	0	0	-	-	-	-
ANGUILLA	5	3	1.654	7	3	2.083	-21%	0%	-21%
CAPE VERDE	4	2	2.550	1	1	1.567	171%	66%	63%
TURKS AND CAICOS, ISLANDS	2	1	1.859	3	2	2.083	-29%	-21%	-11%
DEMOCRATIC REPUBLIC OF THE C...	2	5	370	21	50	421	-91%	-90%	-12%
TURKEY	0	0	-	92	6	14.393	-100%	-100%	-
FRENCH GUYANA	0	0	-	115	55	2.079	-100%	-100%	-
NAMIBIA	0	0	-	41	15	2.700	-100%	-100%	-
	<b>837.264</b>	<b>358.699</b>	<b>2.334</b>	<b>857.573</b>	<b>326.323</b>	<b>2.628</b>	<b>-2%</b>	<b>10%</b>	<b>-11%</b>